



# CHÂTEL

*Practical guide*

Winter 2017 - 2018



**châtel**  
Portes du Soleil

# Contents

03  
Skiing  
IN CHÂTEL

15  
Staying  
IN CHÂTEL

37  
Relaxing  
IN CHÂTEL

45  
Plan  
OF CHÂTEL

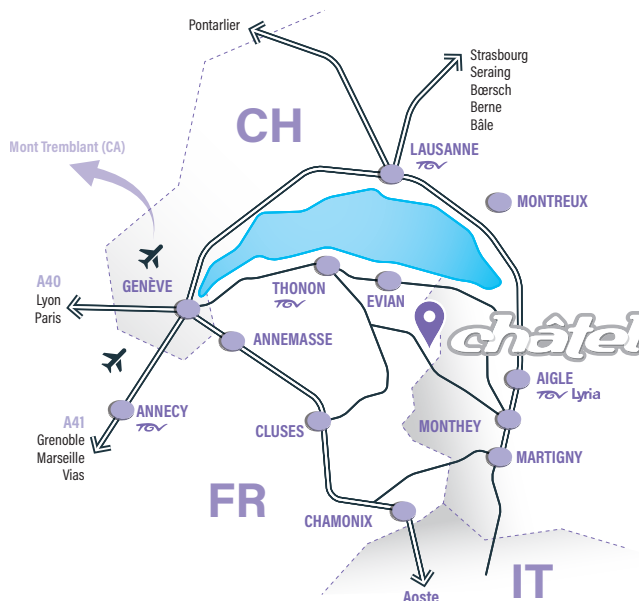
## Châtel tourisme

### Opening hours

- › **Mid-December to April:** open daily 8.30am to 7pm.
- › **May and June and September to Mid-December:** Monday to Friday 9am-12pm and 2pm-6pm. Saturday 9am-12pm and 2pm-5pm. Closed on Sundays and public holidays.
- › **July and August:** open daily 9am to 7pm.

### Contact

› 14, route de Thonon  
BP 40 - F - 74390 Châtel  
Haute-Savoie - France  
Tel. 33 (0)4 50 73 22 44  
Fax. 33 (0)4 50 73 22 87  
touristoffice@chatel.com  
[www.chatel.com](http://www.chatel.com)



## COMING to Châtel

Located in the heart of the Portes du Soleil between Lake Geneva and Mont-Blanc, Châtel is just 20 minutes from the Swiss motorways, 30 minutes from Aigle railway station, 1.40 hours from Geneva Cointrin international airport and 45 minutes from Thonon-Bains railway station.

### GPS coordinates

Latitude: 46.269966  
Longitude: 06.840753

### By road

From France: follow signs for Geneva, exit the autoroute at Annemasse, continue to Thonon then follow signs for Vallée d'Abondance/Châtel.

From Switzerland: follow signs for Monthey - Grand Saint Bernard, exit the autoroute at Monthey (Portes du Soleil exit) then follow signs for Morgins. Car sharing: the Haute Savoie Departmental Council has set up a website that enables people travelling to Châtel to find a car-sharing partner just a few clicks!  
› [www.covoiturage.cg74.fr](http://www.covoiturage.cg74.fr)

### By rail

From France: Thonon railway station is the closest to the resort, with connecting taxi and bus services. From Switzerland: there is a daily rail service between Geneva airport and Aigle. Transfers between the station and resort are by taxi.

During school holidays, the Buski service operates transfers between the Valley resorts and the TGV Lyria rail service at Aigle station.  
› [www.voyages-scnf.com](http://www.voyages-scnf.com)  
[www.tgv-lyria.com](http://www.tgv-lyria.com)

### By air

Geneva Cointrin international airport is only 1.40 hours from Châtel. Travel to Châtel is by train to Aigle or Thonon then by bus or taxi.



# Skiing in Châtel

**A destination  
of choice**  
where ski freedom  
comes naturally!



## CHÂTEL LIBERTÉ, a single large ski area

**Châtel / La Chapelle  
d'Abondance / Torgon /  
Morgins (Corbeau sector)**

The Châtel Liberté ski pass gives you access to 61 ski lifts and 73 pistes. It is valid throughout the ski areas of Châtel, La Chapelle d'Abondance, the Swiss resort of Torgon and the Corbeau sector of the Swiss resort of Morgins.



### OPENING DATES

The Châtel ski area will open partially on **16 December 2017** (Linga/Pré-la-Joux sector).

From **23 December 2017**, all of the ski area will be open to skiers.

*More information:*  
[www.chatel.com](http://www.chatel.com)

## LES PORTES DU SOLEIL

**An international reputation  
and wide open spaces.**

**Twelve ski resorts have joined forces to offer the very best in skiing! 286km of pistes and nearly 196 ski lifts.**

Châtel is directly connected with the ski resorts on the French side: Avoriaz, Morzine, Les Gets, Saint Jean d'Aulps, Montriond, Abondance and La Chapelle d'Abondance; and on the Swiss side: Morgins, Torgon, Champoussin-Les Crosets and Champéry. The links between the ski areas are due to open on 23 December 2017. The links are due to close on 22 April 2018 (weather permitting).

## INTER-SECTOR links

**Super-Châtel and Linga**

**The 6-seater Portes du Soleil and 4-seater Gabelou detachable chairlifts connect the Super-Châtel and Le Linga ski areas.**

They both start from Vannes, near Morgins on the Swiss border, taking pressure off the shuttle service and reducing car usage.

The link makes getting around faster and more practical, enabling skiers of all abilities to get even more out of the two sectors of the Châtel Liberté ski area.

## A QUALITY *ski area*

### Snowmaking facilities

**Blues, red, blacks or greens... pistes of every colour and for every taste!**

The quality of our ski area is dependent not just on falls of natural snow but also on the skill and professionalism of our snowmakers and piste-groomer operators, who work hard to optimise the snow cover. To guarantee premium skiing conditions all winter long, our network of 292 snowmakers covers nearly 40% of the pistes in the Châtel Liberté ski area.

### A skilfully maintained landscape

Scrub clearance, natural soil improvement and revegetation are carried out in close collaboration with local farmers, who are the custodians of our countryside. The quality of the pastures dictates the quality of the milk... and the quality of the pistes.

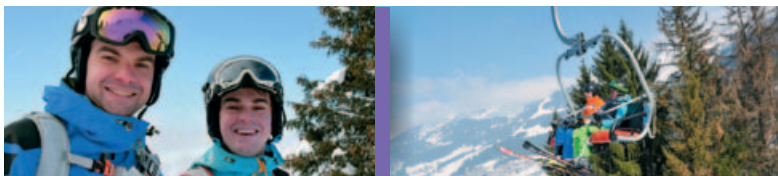
### Keeping it clean...

The resort of Châtel has signed the sustainable development charter, and this means concrete initiatives on the ground: selective waste sorting, burying utilities networks, using low-consumption (LED) public lighting, providing free bus services, running cleaner grooming machines, protecting springs and also providing waste bins around the ski area and even ash trays at the bottom of chairlifts. What's more, Châtel has 'Flocon Vert' certification, awarded by the Mountain Riders Association to mountain resorts that ensure their procedures are eco-friendly.

## ISO 9001, 14001 and OHSAS 18001 certification

**The way the ski area is managed has to be exemplary in a number of ways.**

An active environmental protection policy (efficient use of energy and water resources, waste sorting, etc.), paying particular attention to customer satisfaction and making continual efforts to improve the services and facilities offered to users of the ski area. In 2016, we reached the next level by obtaining OHSAS 18001 certification by introducing a new health and safety at work management scheme.









	PISTES					SKI LIFTS						INFRASTRUCTURES							
	●	●	●	●	Total	🚠	🚡	🚡	🚡	🚡	🚡	Total	🚶	🚶	🚶	❄️	🛖	🚰	📶
PORTES DU SOLEIL	30	110	123	37	300	4	9	78	102	4	-	197	10	2	4	1300	100	174	
	Max. alt.: 2,400 m - Min. alt.: 950 m - Max. vert. drop: 1,100 m																		
CHÂTEL LIBERTÉ	7	23	29	12	73	-	3	19	35	3	1	61	1	-	1	300	16	40	Wifi zones
	Max. alt.: 2,200 m - Min. alt.: 1,100 m - Max. vert. drop: 1,000 m																		





# Ski lifts



## TOP UP YOUR SKI PASS *online*

### Practical, easy and fast!

With our online ski pass top-up service, you can get straight out on the piste in three clicks, without having to go to a ticket sales outlet!

LOG ON TO:  
[skypass-chatel.com](http://skypass-chatel.com)

Your chosen ski pass will be activated the first time you pass a ski lift control terminal.

## PRICES

Valid from 23 December 2017 to 30 March 2018 (prices are given for information purposes and may be subject to change).

### CHÂTEL LIBERTÉ

#### INDIVIDUAL PRICES

Duration	Adult 20 to 64 years	Youth/ Senior 16 to 19 years/ 65 and over	Child 5 to 15 years
5 hours <sup>(1)</sup>	€35.90	€32.40	€27.00
1 day	€41.80	€37.60	€31.40
2 days	€83.20	€74.90	€62.40
5 NC days / 7 <sup>(2)</sup>	€178.00	€160.00	€133.00
6 x 5 hours <sup>(3)</sup>	€184.00	€166.00	€138.00
6 days	€199.00	€179.00	€149.00

#### FAMILY PRICES<sup>(4)</sup>

Duration	Adult	Youth/ Senior	Child
5 hours <sup>(1)</sup>	€32.40	€29.10	€24.30
1 day	€37.60	€33.90	€28.20
2 days	€74.90	€67.40	€56.10
5 NC days / 7 <sup>(2)</sup>	€160.00	€144.00	€120.00
6 x 5 hours <sup>(3)</sup>	€166.00	€149.00	€124.00
6 days	€179.00	€161.00	€134.00

### LES PORTES DU SOLEIL

#### INDIVIDUAL PRICES

Duration	Adult 20 to 64 years	Youth/ Senior 16 to 19 years/ 65 and over	Child 5 to 15 years
5 hours <sup>(1)</sup>	€47.00	€42.00	€35.00
1 day	€52.00	€47.00	€39.00
2 days	€99.00	€89.00	€74.00
6 days	€260.00	€234.00	€195.00

#### FAMILY PRICES<sup>(5)</sup>

Duration	Adult	Youth/ Senior	Child
5 hours <sup>(1)</sup>	€42.00	€38.00	€32.00
1 day	€47.00	€42.00	€35.00
2 days	€89.00	€80.00	€67.00
6 days	€234.00	€211.00	€176.00

## SPECIAL *options*

### <sup>(1)</sup>5-hour Portes du Soleil or Châtel Liberté pass

This incredibly flexible ski pass enables you to enjoy the whole of your chosen ski area for 5 consecutive hours, starting whenever you want (starting from the time of passing the first ski lift gate, during ski lift operating hours).

### <sup>(2)</sup>The Châtel Liberté pass for 5 non-consecutive days

To include a day exploring the Portes du Soleil ski area (in addition) or if you want to have a day off skiing during your holiday, choose the Châtel ski pass for 5 non-consecutive days (valid for 7 days).

### <sup>(3)</sup>Châtel Liberté 6 x 5 hours pass

This is the perfect option for skiers who prefer to ski for just half a day, starting whenever they want and without having to queue to buy a pass every day! Top up your hands-free card with 6 x 5 consecutive hours of skiing in the Châtel Liberté ski area (valid for 7 days).

### "Group" prices

For 13 or more skiers (Châtel Liberté and Portes du Soleil ski passes).

### <sup>(4)</sup>Châtel Liberté Family/gang price



When purchasing in one transaction at least 4 Châtel ski passes of the same duration and same dates including one Children's or Junior pass!

Family gang: extended family or stepfamily (parents/children, grandparents/grandchildren, etc.)

### <sup>(5)</sup>Portes du Soleil family price

A 'Family' price is also available for the Portes du Soleil ski pass. Applicable to the purchase in one transaction of a minimum of 4 ski passes of the same duration and validity, comprising a maximum of 2 parents **or** grandparents **and** a minimum of 2 children **and/or** 2 youths.

### Free

For skiers aged under 5 years, Châtel Liberté and Portes du Soleil ski passes (ski pass compulsory).

Spring  
sking

Châtel and Portes du Soleil ski passes, after 31 March 2018

GET A REDUCTION OF

**15% OFF**



For other options, durations and prices: a single point of contact  
Ski lift company

Tel. 33 (0)4 50 73 34 24  
[www.chatel.com](http://www.chatel.com)

Special offer

### PRE-SEASON PROMOTION

Buy or top up your ski pass Châtel Liberté over the internet: [www.skipass-chatel.com](http://www.skipass-chatel.com) by 15 December 2017 and

### QUALITY FOR

**10% OFF**

ski passes valid for 3 to 8 days.

Plus an additional 10% off online purchases and/or top ups for a family (4 skiers).

### SNOWSPORTS DEALS

**Magic of Christmas, 16 to 29 December 2017:**  
**one free child's ski pass (under 12 years)**  
with every adult ski pass purchased.

Offer applies to Portes du Soleil ski passes valid for 5 or more days (not including Season passes).

**From 31 March 2018 to the end of season:**  
**one free child's ski pass (under 12 years)**  
with every adult ski pass purchased.

Offer applies to Châtel Liberté and Portes du Soleil ski passes valid for 5 or more days (not including Season passes).

Available to purchase from ski lift sales outlets and at

[www.skipass-chatel.com](http://www.skipass-chatel.com)



### Ski pass

Ski passes valid for less than 8 days are issued on a disposable 'Hands-Free' card or rechargeable 'Hands-Free' card\* (€3.00 each incl. VAT).

Ski passes valid for 8 days or more are issued on a rechargeable 'Hands-Free' card\* (€3.00 each incl. VAT).

\* The rechargeable 'Hands-Free card' comes with a loyalty scheme.

## Around THE SKI AREA

### Floodlit skiing

**Want to prolong your day by skiing under the stars?**

Come to the Linga stadium floodlit day evenings between 7.30 and 9.30pm (snow conditions permitting).

Make it a date: it's original, fun and what's more it's free!

### The Milka purple piste, a treat for the eyes...

**One of the best experiences of childhood is getting to grips with nature. And we're all still children at heart!**

Especially when skiing the Milka purple piste, which features a fun presentation of the Alpine fauna. You just have to get off the beaten track a little to get up close to the wildlife here, explained in a series of informative boards and very lifelike animal figures! And why not enjoy a chocolate treat too?

### Fun zone

**Come and check out this zone, which is about 250 m long, cordoned off and secured with nets.**

This is where to come, either with a professional ski instructor or on your own, to measure just how fast you can ski (there's a timing device and electronic speed display), but also and above all to learn to control your braking distance. Located near the Bellevue blue piste in the Super-Châtel/Chalet Neuf sector, the objective of this fun and educational area is to raise awareness among lovers of all kinds of snowsports of the importance of controlling speed and its effect on the seriousness of accidents.

### The Smoothpark

**More features, more riding, more fun!**

In the Smoothpark, rails, kickers, slide boxes, hips, boardercross and more await both beginner and experienced freestylers! There are features suitable for all abilities, enabling you to progress and improve in a fun and friendly snowsports zone (sound system, BBQ, contests and more)!

Awesome: film your exploits on the 'Live Park' video system and share them on the web with your friends!

### DVA park

**Check out the DVA Park, near La Chanterelle piste in the Super-Châtel sector!**

This workshop, run by members of the piste patrol, uses demonstrations as a fun way to teach you how to use an avalanche transceiver (what we call a DVA), and also gives you the chance to try out your own equipment if you have it. The area is open for independent use at any time.

For more information or a demonstration, contact the piste department on +33 (0)4 50 73 35 99 to make an appointment with the piste patrol.

### 4 free WiFi zones

Available in the Plaine Dranse, Pierre Longue, Pré-la-Joux and Vannes sector and the bottom of Le Linga (a WiFi network extension is planned for the Combes and Super-Châtel sectors for the 2017-2018 winter season).

## INSURANCE

### Snowrisk assurances

**From € 3/day: full cover for an accident on the piste and even off-piste. No more unpleasant surprises...**

MORE INFORMATION AT:

[www.snowrisk.com](http://www.snowrisk.com)

### SKI lockers

**The easy way to get on the piste!**

**Now you don't need to carry all your and your family's ski gear around each time you go out skiing!**

The ski lift company offers heated ski lockers with room for all your gear at the top of the Super-Châtel gondola lift and also at the starting point of the inter-resort link at the Vannes site.



## MOBILE app

**Top up your hands-free ski pass from your phone and get on the piste straight away.**

Also features a piste map, real-time piste and lift operation information, details of the ski area and webcam feeds.



Information for the Châtel ski area: SAEM Sports et Tourisme

Tel. 33 (0)4 50 73 34 24

[www.chatel.com](http://www.chatel.com)

# Snowsports schools

**Having lessons is the way to ensure you'll enjoy your skiing to the full.**

To make skiing easier and help you enjoy it even more, Châtel's ski schools use patient and effective teaching methods. They can offer whatever you need, looking after both beginners and skiers keen to perfect their skills. They'll accompany as you progress and come to love the snow.



## ÉCOLE DU SKI FRANÇAIS



> 56 Route de Vonnes 74 390 Châtel  
Tel. 33 (0)4 50 73 22 64  
info@esf-chatel.com  
[www.esf-chatel.com](http://www.esf-chatel.com)

English spoken. Between Châtel Tourisme and the pharmacy. Open daily from 8.30am to 12.30pm and 1.30pm to 6pm. The ESF ski school has been in Châtel since 1948 and today employs 80 instructors, real mountain professionals who all have a national instructor qualification.

**Only the École du Ski Français (ESF) is authorised to hold the 'Étoiles' tests and organise the 'Flèche' and 'Chamois' qualifications.**

### Group lessons for children

#### Alpine ski

Sunday to Friday.

Beginner children/'Piou Piou' - 'Ourson' (5 to 13 years). Small groups.

Total beginners or children with the 'Piou Piou' qualification up to 'Étoile d'Or' preparation.

> 6 sessions, morning or afternoon... **€145**  
> Medal included.

#### New: 'Privilège' group lessons

During February school holidays only. Group sizes limited to 6 children.

From 'Flocon' level to preparation for 'Étoile d'Or'.

> 6 sessions..... **€292**

#### 'Étoiles' tuition

The technical assessment takes place on the last day of lessons, with awarding of the level reached.

Enrolment for this test and the medal are included in the price of the one-week group lessons.

### Beyond 'Étoile d'Or' level During school holidays only

#### Advanced course

Level required: 'Étoile d'Or'

> 6 sessions, morning..... **€199**  
> 1 free enrolment for 'Flèche' test.

#### Freestyle/Freeride course

Skiing or snowboarding. Enrolment numbers limited. Level required: 'Étoile d'Or' or 'Surf 2'

> 6 sessions..... **€249**  
Portes du Soleil lift pass required.

#### 'Ski d'Or' course

Level required: 'Flèche de bronze'. 9am to 12pm Sunday to Friday + Open tests

> 6 sessions..... **€249**  
> free enrolment for 'Flèche' and 'Chamois' levels.

### Private lessons

#### Skiing/Snowboarding/ Cross-country skiing

1 or 2 people

> 1 hr..... **€49**  
> 6 x 1 hrs..... **€270**  
> 1½ hr..... **€73.50**  
> 6 x 1½ hrs..... **€402**

Medals included in the 6-day package. Private lessons available for more than 2 people: reservations at our office.

### Group lessons for adults

#### Alpine ski

Sunday to Friday.

Beginners to category 3.

> 6 sessions..... **€145**  
> Medal included.  
> Beginners' package..... see You Can Ski (page 13)

#### Snowboard

Smaller group sizes to suit the discipline.

Sunday to Friday.

Beginners to category 2.

> 6 x 2½ hrs sessions..... **€199**  
Category 3 et 4  
> 6 x 3 hrs sessions..... **€249**  
> Medal included.

> Wrist protectors and helmet recommended.

### Handiski

#### Tandemski and Dualski

The pleasures of snowsports for all. Get on a Tandemski and let us help you discover the thrills of snowsports.

> 2 hrs..... **€98**

### 'Flèche' / 'Chamois'

Official Ski Open tests and competitions organised at the Linga Stadium.

### Snowshoeing

A programme of different full-day and half-day snowshoeing trips every day, with wildlife-spotting, magnificent panoramas, etc.

### Special services

> School groups (study trips, secondary schools, skiing courses).

> Other groups (clubs, works councils).

> Preparation for ski instructor's technical test training course.

> Vallée Blanche trip with a high mountain guide.

> Ski touring, supervised by a guide/ski instructor.

> ESF club.

> Snake Gliss..... **€15/person**

**These prices do not include ski pass and insurance.**

INFORMATION AND RESERVATIONS:  
[www.esf-chatel.com](http://www.esf-chatel.com)





**BENJAMIN CAVET**  
*Freestyle Skiing / Moguls*



**JÉRÉMY LENVERS**  
*Freestyle Skiing / Moguls*

## ÉCOLE DE SKI CHÂTEL SENSATIONS



› 545 route de Pré-la-Joux 74 390 Châtel  
Tel. 33 (0)4 50 81 32 51  
Fax. 33 (0)4 50 73 34 43  
ecoledeski@chatelesensations.com  
[www.chatelesensations.com](http://www.chatelesensations.com)



Instruction by mountain professionals with nationally recognised qualifications. English, German and Italian spoken. Next to the Linga gondola lift.

### Group lessons for children

From 6 years. Min. 5 people. A friendly and pleasant atmosphere to ensure you make progress. Preparation from 'Marmotte' to competition skiing. Test and record book free of charge.

#### Half-day option

Choice of times available  
› 5 or 6 morning lessons, 2 hrs..... €139  
› 5 or 6 afternoon lessons, 2½ hrs..... €149

#### Half-day option + packed lunch

Morning 9am-1.45pm:  
› 5/6 lessons + packed lunch..... €229  
Afternoon 11.30am-4.30pm:  
› 5/6 lessons + packed lunch..... €239

#### Full-day package

› 5/6 lessons..... €279  
› 5/6 lessons + packed lunch..... €369  
› separate price for packed lunch + supervision..... from €6 to €15

### Private lessons

Skiing, telemark, snowboarding, snowshoeing, cross-country skiing, ski touring, moguls, freestyle and freeride.

- › Tailored and personalised tuition.
- › From 1 to 2 people and 3 to 5 people.
- › Private lessons are available until 7pm on the floodlit piste.
- › 5 lessons or more: test and record book included.
- › From 1 hour to private hire for the day.
- › Plan your day the way you want to.
- › For under 5s, lessons last ½ hr.

### Private hire

All the fun of snowsports with the family or a group of friends, by the half day or full day in the Portes du Soleil.

› From..... €190

### Snowshoeing and ski touring

½-day, full-day, evening trips or by the hour.

### Special sessions for disabled skiers

Tandemski, Dualski, Uniski, etc.  
Information and prices: contact us.

### Ski taxi

Ideal for both non-skiers and skiers, you sit comfortably in a ski chair steered by one of our instructors for the pleasure of whizzing around the pistes around the Portes du Soleil ski area in complete safety. New: ski taxis for 2, 3, 4 and more.

### Adult lessons

#### Group lessons

5/6 lessons. Choice of times available, minimum 5 people. A friendly and pleasant atmosphere to ensure you make progress.

› 5/6 lessons..... €139

#### Courses

##### Snowboard courses 1h30

5 days. Beginner's snowboarding to Gold snowboarding: minimum 5 people. Test session, free record book. Wrist and back protectors and helmet advised.

› Children from 10 years and adults... €139  
› Clinic for children aged 6 to 10..... €115

##### Freeride and Freestyle courses

Level: adults and children from diamond 'Marmotte' level.

New: Marmotte Still.  
› 5 x 3 hrs lessons..... €190

##### Mogul skiing courses

Level required: diamond or sapphire 'Marmotte' level. Tuition by ex-members of the French team.

› 5 x 3 hrs lessons..... €190

##### Ski Safari

Spring 2018.

Ski passes and insurance are not included in the prices. Booking advised, by post or via the Internet.

**Cancellation insurance available.**  
See general terms and conditions.

# Become a champion of the future

### Châtel supports its ambassadors

We salute all the members of Châtel Ski Club who help ensure our resort is a lively, fun place throughout the winter season. Each of them flies the flag for Châtel, in their preferred discipline.



**VALENTIN FAVRE**  
*Ski Mountaineering*

**JADE GRILLET-AUBERT**  
*Alpine Skiing*

# ÉCOLE DE SKI PRO SKIING



› 105 route de Vonnès 74 390 Châtel  
Tel. 33 (0)4 50 73 31 92  
admin@esichatel.com  
[www.esichatel.com](http://www.esichatel.com)

**Next to the cinemas. Bilingual and trilingual instructors with nationally recognised qualifications providing lessons in small groups of no more than 6, 8 or 10 pupils.**

A group of true mountain professionals giving you the benefit of their talents, helping you to take the time to enjoy learning the French skiing technique from A to Z and to enjoy yourself on your own, with your friends or family. ESI, giving you a choice for the last 35 years...

## Lessons for children

### Aged 4 and 5

Beginner and 'Souris' level

- › 5 mornings, 9 to 11am or 11am to 1pm, 3 to 6 children..... €160
- › 6 afternoons, 3 to 5pm, 3 to 6 children..... €175

### From 6 years

Beginner to 'Diamant' level

- › 5 mornings, 9 to 11am or 11am to 1pm, 4 to 10 children..... €135
- › 6 afternoons, 3 to 5pm, 4 to 10 children..... €145
- › Test, record book and medal free of charge.

## One-to-one tuition

### Ski / Snowboard / Telemark

Tailored and personalised instruction given in French, English, German, Italian, Russian, Romanian, Dutch and Spanish. From 1 hour to full-day trips.

## Adult lessons

### Skiing

From beginners to Category 3

- › 5 mornings, 9 to 11am or 11am to 1pm, groups of 4 to 8 ..... €135

### Snowboarding

From beginners to 'Board d'Or'

- › 5 mornings, 9 to 11am, groups of 4 to 8 .....
- › Test and record book free of charge.
- › Medal ..... €8

### Freeride/Moguls class

- › 5 mornings, 9 to 11am, groups of 3 to 6, minimum age 14 ..... €270

### Portes du Soleil Explorer

An unforgettable day's skiing with our professionals. Maximum 6 people.

- › Every weekend, 9am to 5pm ..... €80

## Snowshoeing

Half-day trips, evening trips, with supper in a mountain hut, with mountain leader Serge Bigot.

## Clinics for teenagers

### All Mountain Club

Explore new horizons, steep slopes, powder, moguls and freestyle. Saturday from 9am to 5pm.

- › 4 to 6 people ..... €80

### INFORMATION:

Office open daily: Saturday and Sunday 8.30am-7pm and Monday to Friday 8.30am-12.30pm and 3.30pm-7pm.

# ÉCOLE SKI ACADEMY



› 213 Chemin de l'Etringa 74 390 Châtel  
Tel. 33 (0)6 81 66 52 80  
[www.ecoleskiacademy.com](http://www.ecoleskiacademy.com)

**Choose quality tuition from ski instructors with nationally recognised qualifications.**

## A la carte private lessons

### Skiing, Snowboarding, Snowscouting, Freeride, Freestyle, Yooner.

- › Lessons lasting 1 hr, 1½ hrs, 2 hrs, ½ day and full day, 1 to 6 people.

## Family group lesson

Explore Châtel and the Portes du Soleil while improving as a family. Times to suit: 2½ hrs, 3 hrs, 4 hrs or full day. Pick-up option at your accommodation.

## 'Privilège' group lessons

Max. group size 7 for improved safety and optimum pupil progression. Test and record book free of charge.

- › 5/6 lessons, 2 hrs ..... €190

## 'Privilège' full-day or ½ day lessons

Portes du Soleil Explorer.

- › ½ day, 3 hrs ..... €160
- › ½ day, 4 hrs ..... €213
- › Full day ..... €300 to €360

## Competition training and Ski Club Academy

Various clinics organised: season, weekend and school holiday periods.

- › For prices contact us.

## Skiing for the disabled

Wide selection of approved equipment designed for all kinds of disability (Tandemski, Uniski and Kartski). The only ski school licensed as a training school.

- › For prices contact us.

## After Ski Academy

Airboard, snakegliss, snowracer, yooner: when the pistes have closed, enjoy a 4km descent on our different new-generation sledges. Open to everyone.

- › For prices contact us.

## Snowshoeing

Half-day and full-day trips and courses lasting several days, for individuals and groups.

## Special services

- › Organisation of races, adventure evenings, course tests, etc.
- › Corporate events: liven up your corporate events with a range of made-to-measure packages (airboarding, yooner, snakegliss, races and more...) plus an optional dinner in a mountain restaurant with torchlight descent.
- › Why not try summer glacier skiing?

## High MOUNTAIN GUIDES

**Freeride trips, ski touring, mountaineering, ice climbing, heliskiing.**

**FREDRIKSEN Jean-Yves**  
avalanche safety instruction  
Tel. 33 (0)6 76 41 61 80  
[parabondance.blog.free.fr](http://parabondance.blog.free.fr)

**ROSSIER Bernard**  
Tel. 33 (0)6 88 57 32 19

**VERDIER Paul**  
Tel. 33 (0)6 21 01 03 68  
[www.esf-chatel.com](http://www.esf-chatel.com)



## FREELANCE SKI instructors

**Instruction with nationally qualified instructors.**

**RENARD Stéphane**  
Tel. 33 (0)6 11 87 22 37  
[mountain-safari@sfr.fr](mailto:mountain-safari@sfr.fr)  
[www.mountain-safari.com](http://www.mountain-safari.com)  
**VIGIOLA Corinne and Yan**  
Tel. 33 (0)6 11 20 21 90  
[cocoyansnowski@neuf.fr](mailto:cocoyansnowski@neuf.fr)  
**GRIESMAR Gilles**  
Tel. 33 (0)6 08 14 09 65  
[gillesgriesmar@orange.fr](mailto:gillesgriesmar@orange.fr)

**LIPS Olivier**  
Tel. 33 (0)6 21 70 51 07  
[olivier@snowboardattitude.com](mailto:olivier@snowboardattitude.com)  
[www.snowboardattitude.com](http://www.snowboardattitude.com)  
**ROQUES Julien**  
Tel. 33 (0)6 13 13 64 46  
[jukaribou@skichatel.fr](mailto:jukaribou@skichatel.fr)  
[www.skichatel.fr](http://www.skichatel.fr)  
**DIVERS Martin**  
Tel. 33 (0)6 26 74 54 59  
[info@torrsnowboarding.com](mailto:info@torrsnowboarding.com)  
[www.torrsnowboarding.com](http://www.torrsnowboarding.com)



## ÉCOLE DE SKI SNOWRIDE

› 1616 route des Freinets 74 390 Châtel  
 Mob. 33 (0)6 08 33 76 51  
 33 (0)6 16 43 02 94  
 snowridechatel@aol.com

### Skiing & Snowboarding

- › Specialists in private lessons and day trips exploring the Portes du Soleil ski area.
- › Private lessons at any time of day.
- › Special services for school groups, other groups, corporate events, works councils, weekends, etc.
- › Lessons in French, English, Dutch, German and Spanish.



## Ski kindergarten

### CLUB PIOUS PIOUS



› École du Ski Français 74 390 Châtel  
 Tel. 33 (0)4 50 73 22 64  
 info@esf-chatel.com  
 www.esf-chatel.com

**Village des Marmottons. Ski school especially for children aged 3 to 6, from beginners to preparation for 'Ourson' level.** Enclosed safe area with special facilities, reception chalet suitable for young children with games room, rest area, cloakrooms and toilets. 2 rope tows, 1 ski tow. Guaranteed snow cover (snowmaker).

### Introduction to skiing

For 3-year-olds, introduction to snowsports in small groups and 1-hour sessions, complemented by indoor or outdoor activities. For 4 to 6-year-olds, preparation for 'Piou Piou' to 'Ourson' level, tailored to the progression of young children.

### The Club Piou Piou

is open from Sunday to Friday:

- › full-day or ½-day lessons
- › with or without lunch

Free snack during every session. Recognition of their technical ability at the end of their stay with official ESF (École du Ski Français) tests: 'Piou Piou' and 'Ourson'. Free medal included with the 6-day packages.

### Prices

› 1 session .....	€40
› 6 ½-day sessions .....	€187
› 6 lunch breaks .....	€126
› 6 full days without lunch .....	€335
› 6 full days with lunch .....	€461
› One-to-one tuition available	

### Opening hours

› Morning .....	8.30am to 12.30pm
› Afternoon .....	1.30pm to 5.00pm
› Lunch break .....	12.00pm to 2.00pm

#### INFORMATION AND BOOKING:

ESF office in the resort centre (between Châtel Tourisme and the pharmacy). Booking advised.

Online sales: [www.esf-chatel.com](http://www.esf-chatel.com)

### JARDIN DES PITCHOUNES



› École de Ski Châtel Sensations 74 390 Châtel  
 Tel. 33 (0)4 50 81 32 51  
 Fax. 33 (0)4 50 73 34 43  
 ecoledeski@chatelsensations.com  
 www.chatelsensations.com

**Ski nursery for children aged 3 to 6, next to the Linga gondola lift. Especially equipped, safe, enclosed area. Heated chalet with rest area and toilets. Snow front and ski tow, guaranteed snow.**

#### For children aged 3 and 4

Introduction to skiing plus a variety of fun activities.

#### For children aged 4 to 6

Group ski lessons with an instructor.

### Prices

› 5/6 morning starter sessions, 2 hrs .....	€174
› 5/6 afternoon starter sessions, 2½ hrs .....	€185
› 1 starter session .....	€45
› Private lesson (½ hr) .....	€28
Included: introduction to skiing, snack, use of rope tow. Test and record book included.	

### Packages

› New 5 or 6 introductory ski sessions + packed lunch: 9am-1.45pm .....	€264
11.30am-4.30pm .....	€275
› 5 or 6 full-day introductory ski sessions .....	€335
with packed lunch .....	€425
› + packed lunches available individually + supervision ...	€15

#### INFORMATION AND BOOKING:

École de Ski Châtel Sensations office at the bottom of Le Linga.

#### Cancellation insurance available.

See general terms and conditions.



# Other snowsports services



## NEW TRENDS, new snowsports

### Full-on après-ski fun

Airboarding: whizz down the slope stretched out on an inflatable bodyboard. You'll need a helmet, because this will blow your mind!

Or the Snake Gliss... all aboard on a string of little sleds joined together like railway carriages as you snake down the slope. The instructor is in control and guides the descent, choosing your trajectory and keeping the turns coming - it's hilarious fun!

Or how about the yooner? This consists of a seat, a shock-absorber and a ski. You don't have to lift up your feet, just keep them on the ground as you slide down! Give it a go!

Or maybe try something new: the Snowracer is a go-kart for the snow, with a seat, a steering wheel, three skis and a brake, for guaranteed thrills!

#### INFORMATION:

#### › École Ski Academy

« After Ski Academy »

Airboard, Snake gliss, Snowracer and Yooner

Tel. 33 (0)6 81 66 52 80

[www.ecoleskiacademy.com](http://www.ecoleskiacademy.com)

#### › ESF

Snake Gliss, price ..... €15

Reservations: 33 (0)4 50 73 22 64

[www.esf-chatel.com](http://www.esf-chatel.com)

## NEW-FOUND independence

### Facilities and accessibility for disabled skiers.

When it comes to the skiing, skiers with disabilities and mobility-impaired and elderly skiers are looked after by well trained and suitably equipped enthusiastic professionals.

With equipment such as the Dualski\*, Uniski\*, Kartski\* and Tandemski\*, guests can enjoy the pleasures of snow and the mountains and experience the unique thrill of skiing sitting down in the safe hands of a professional.

With the Taxiski, holidaymakers can head for the peaks for a great view of Lake Geneva, or can be taken up to the ridge for an amazing vista of the Mont-Blanc range. Everyone can share in the thrill!

\* registered trademarks

## An easy OFF-PISTE ROUTE

### Accompanied by a mountain professional.

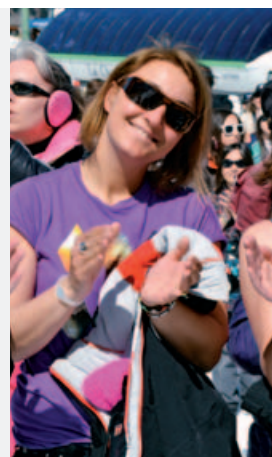
First tracks with a wilderness feel: together with a mountain professional, explore La Leiche, an easy and accessible off-piste route; this side valley is near the ski lifts and has a reputation for a great location and great snow. A fantastic opportunity to take on the slopes.



## SKI LIFTS for pedestrians

### In Châtel, some of the ski lifts are open to pedestrians.

Tickets for pedestrians are on sale at the ski lift ticket offices and can be used on 4 lifts: Petit-Châtel, Pierre Longue and Portes du Soleil chairlifts and Super-Châtel gondola.





## FANTASTICABLE *winter experience*

At the top of the Rochassons chairlift, participants in this amazing adventure take off their ski equipment, strap in and zoom off on cable No. 1, 'flying' over the village of Plaine-Dranse 140 metres up in the air!

You speed along this giant zip wire (1,200 metres of cable) at speeds approaching 100km/h! Thrills guaranteed!

At the finish, your ski equipment is returned to you (it arrives there the same way you do, in a special bag).



PER FLIGHT  
**€25\***

\*Activity subject to terms and conditions and accessible only to people equipped with snowsports equipment (not including special devices such as snowscoot, ski bike, etc.).

More information:  
Tel. 33 (0)4 50 81 34 83



## Great FOR BEGINNERS

**Skiing for people of all abilities, regardless of how fit or what age you are!**

The Portes du Soleil has introduced an innovative new product designed specifically for adults who have never put on skis in their life. It would be such a shame and so frustrating for them to hear their friends talking about their ski holiday, the deep, crisp snow and the amazing views they've seen.

**'You can ski': the easy way to get started!**

This exclusive offer includes everything (ski pass + ski lessons + equipment) and was designed for adult beginners. Flexible and progressive: choice of a 6-consecutive-day package or a 3-day package. It also includes tailored tuition and a special learners' ski area (with beginner-only pistes), where beginners don't stay for long!

CONDITIONS AND RESERVATIONS:  
[www.esf-chatel.com](http://www.esf-chatel.com)  
[www.portesdusoleil.com](http://www.portesdusoleil.com)



## Three resorts, ONE NORDIC SKI AREA

**Abondance, La Chapelle d'Abondance and Châtel have joined forces to offer you a single 40km-long nordic ski area by the side of the River Dranse.**

The Val d'Abondance nordic ski area offers 7 cross-country skiing trails, 8 nordic trails (for cross-country skiing, winter walking and snowshoeing), one beginners' trail, a fun activity area and a biathlon shooting range.

In Châtel, 4 ski lifts are accessible to pedestrians and snowshoers, providing easy access to several waymarked and safe nordic trails: the Petit-Châtel Loop, the Super-Châtel Loop and the Col de Bassachaux.



# Sports shops

- › **La Béchigne Sports Ski Set** ☆..... F4  
Tel./Fax. 33 (0)4 50 73 61 17  
labechignesports@gmail.com
- › **Charles Sports Ski Set** ☆..... F3  
Tel./Fax. 33 (0)4 50 73 24 37  
charlesport@wanadoo.fr  
www.charles-sports.com
- › **Chez Maurice Sports** ..... I3  
Tel./Fax. 33 (0)4 50 73 20 98  
contact@chez-maurice-chatel.com  
www.chez-maurice-chatel.com
- › **Crépy Sports** ..... L6  
Tel. 33 (0)4 50 73 30 09  
33 (0)6 82 14 57 31  
crepysports@orange.fr  
www.crepysports.com
- › **Daniel Cruz Sports** ..... I3  
Tel./Fax. 33 (0)4 50 73 21 50  
Tel. 33 (0)4 50 81 35 24 ..... L6  
Fax. 33 (0)4 50 73 21 50  
www.danielcruzsports.com
- › **Intersport**  
Tel. 33 (0)4 50 73 20 56 ☆..... G3  
Fax. 33 (0)4 50 81 37 21  
Tel. 33 (0)4 50 73 24 13 ..... G2  
Fax. 33 (0)4 50 81 37 21  
Tel. 33 (0)4 50 73 21 79 ..... B2  
Fax. 33 (0)4 50 81 37 21  
www.intersport-chatel.com
- › **Linga Ski Shop** ..... M6  
Tel. 33 (0)4 50 81 04 21  
33 (0)6 72 07 65 10  
contact@location-ski-chatel.com  
www.location-ski-chatel.com
- › **Mountain Ride - Cédric Mésière** ☆ L6  
Tel. 33 (0)4 50 73 58 58  
www.twiner-chatel-linga.fr
- › **Pré-la-Joux Sports** ..... M9  
Tel. 33 (0)4 50 73 06 00  
www.prelajouxsports.com
- › **Richard Sports - Skimium** ..... G3  
Tel. 33 (0)4 50 73 24 69  
Fax. 33 (0)4 50 73 29 59  
www.richardsports.com
- › **Richard Sports Bis** ☆..... G3  
Tel. 33 (0)4 50 73 36 69  
Fax. 33 (0)4 50 73 29 59  
www.richardsports.com
- › **Ski Fun** ..... F3  
Tel./Fax. 33 (0)4 50 73 20 71  
www.ski-fun-chatel.fr
- › **Sports Liberté - Skimium** ..... M6  
Tel./Fax. 33 (0)4 50 73 75 46  
www.sports-liberte.skimium.fr
- › **Ski Services-Henri Gonon-Ski Set** .. B2  
Tel. 33 (0)4 50 73 23 04  
33 (0)6 08 49 12 28  
Fax. 33 (0)4 50 73 22 79  
www.ski-services.fr
- › **Sport 2 000 - Germain Sports** ☆  
Tel. 33 (0)4 50 73 22 82 ..... G2  
Tel. 33 (0)4 50 73 32 67 ..... M6  
germainports@wanadoo.fr  
www.germainsports.com
- › **Sports Evasion** ..... M6  
Tel. 33 (0)4 50 73 29 75
- › **Switch5** ☆..... G3  
Tel. 33 (0)4 50 81 61 79  
Tel. 33 (0)6 15 01 90 43  
www.switch5boardshop.com
- › **Twiner - Centre - Marc Mésière** ☆H3  
Tel. 33 (0)4 50 73 30 80  
www.twiner-chatel-centre.fr
- › **Vertical Horizons** ☆..... K5  
Tel. 33 (0)4 50 73 38 91  
info@verticalchatel.com  
www.verticalchatel.com
- › **Vincent Sports Rubin** ..... F3  
Tel./ Fax. 33 (0)4 50 73 20 70  
www.vincentsports-chatel.com

## EQUIPMENT *hire*

### Winter 2017-2018 prices

Duration	Adults	Juniors aged 7-12	Children aged 3-6
<b>ALPINE SKIING</b>			
1 day	€16 / €49	€10 / €24	€6 / €18
6 days	€79 / €207	€50 / €106	€34 / €54
<b>SNOWBOARDING</b>			
1 day	€18 / €33	€12 / €24	Enquire at hire shops
6 days	€103 / €186	€72 / €108	
<b>CROSS-COUNTRY SKIING</b>			
1 day	€9 / €20	€7 / €11	€5 / €8
6 days	€39 / €71	€22 / €56	€23 / €37.50
<b>SNOWSHOEING</b>			
1 day	€6 / €9	€4.50 / €8	Enquire at hire shops
6 days	€33 / €47	€32 / €47	



☆: open also in summer





**Staying**  
*in Châtel*





# Choose your accommodation carefully!

**Huddled cosily in its rural setting, Châtel offers you all the benefits of its expertise in hospitality. Holidaying with us gives you the opportunity to discover the many different sides of Châtel.**

To ensure you have the very best holiday experience, Châtel continues the traditions and mountain way of life that have forged its reputation. The choice of accommodation, the facilities, the warmly welcoming atmosphere and the services on offer ensure you really get into the holiday mood and enjoy home-from-home comforts. The quality and diversity of the options open to you are proof of our desire to help make your holiday in the snow a success.

## RESORT *tax*

In Châtel, visitor tax is levied on the number of nights booked, to reflect actual visitor numbers, as in more than 90% of winter sports and summer resorts.

Resort tax is collected directly from the holidaymaker by the accommodation provider, who repays this tax to the local council.

Resort tax is payable all year round, from 1 January to 31 December. The tax revenue is put back into the system on the basis of the dates in force. And don't forget: the tax revenue generated is spent on all the tourism-related initiatives.

Under 18s are exempt.

TYPE OF ACCOMMODATION <sup>(1)</sup>	CHARGE PER PERSON PER NIGHT
<b>Hotel</b>	
★★★★	€ 2.00
★★★	€ 1.50
★★	€ 0.90
★	€ 0.75
No stars	€ 0.55
<b>Holiday residence, Furnished apartment, Holiday village</b>	
★★★★ and ★★★★★	€ 2.00
★★★	€ 1.50
★★	€ 0.90
★	€ 0.75
No stars	€ 0.80
<b>Camp site</b>	
★★★ and ★★★★★	€ 0.55
★ and ★★	€ 0.20
<b>Youth hostel</b>	€ 0.55
<b>Holiday center</b>	€ 0.45







For details of hotel availability go to [www.chatel.com](http://www.chatel.com)

## TRAVEL *agency*

### Hotel, chalet and apartment reservations

Groups and individuals, business, sports and leisures. All types of services organised (transfers, accommodation, tourist circuits and visits).

### CHÂTEL RÉSERVATION ..... E3 C

Tour operator - Incoming agent

#### Advice & Reservations

Registration certificate No.

(Register of Tour and Holiday Operators): IM074100023

› 281 Route de Thonon

Tel. 33 (0)4 50 73 30 22

Fax. 33 (0)4 50 81 30 34

info@chatelreservation.com

[www.chatelreservation.com](http://www.chatelreservation.com)

## REAL ESTATE *developers*

### LB IMMOBILIER ..... H3 4

#### New builds

› 148, Route de Vannes

Tel. 33 (0)4 50 76 78 85

contact@lbchatel-immobilier.com

[www.groupe-lb-immobilier.com](http://www.groupe-lb-immobilier.com)

### MGM CONSTRUCTEUR ..... G3 8

#### New builds

› 7, route de Vannes

Tel. 33 (0)4 50 72 38 46

Fax. 33 (0)4 50 02 52 94

mgmetvous@mgm-immobilier.fr

[www.mgm-constructeur.com](http://www.mgm-constructeur.com)

## APARTMENT *rental prices*

Guide prices for rental of furnished apartments, winter 2017-2018 applicable for all service providers.

Please note: the prices below are for information purposes only. Rental rates vary according to surface area, fixtures and fittings, the quality of the furniture and which way the apartment faces.

### PRICE PER WEEK

Studio  
for 3/4

Christmas/  
New year  
from 23.12.17  
to 06.01.18

€384 / €858

Offer period  
from 06.01.18  
to 27.01.18  
from 17.03.18  
to 21.04.18

€242 / €438

Season  
from 27.01.18  
to 10.02.18  
from 10.03.18  
to 17.03.18

€283 / €522

High Season  
from 10.02.18  
to 10.03.18

€471 / €900

2-room  
for 5

€604 / €1128

€367 / €576

€433 / €690

€746 / €1188

3 or 4-room apt.  
for 6/7

€750 / €1632

€442 / €810

€521 / €966

€925 / €1716

4 or 5-room apt.  
for 8/12

€1000 / €2796

€592 / €1380

€696 / €1656

€1233 / €2940

Freestanding  
chalets  
for 13/20

€1625 / €4662

€958 / €2304

€1129 / €2760

€2004 / €4902

Choose your accommodation carefully!



# LET US LOOK AFTER YOUR HOLIDAY!

## *Châtel réservation*

**A RESORT-BASED AGENCY FOR BOOKING WITH PEACE OF MIND.**

**QUALIFIED STAFF TO WELCOME AND ASSIST YOU.**

### *All types of accomodation*

- › Apartment
- › Chalet
- › Hotel
- › Holiday residence

### *All types of bookings*

- › Bookings for a weekend, a week or longer
- › Accommodation only, all-inclusive holidays

### *À la carte services*

- must be booked at the same time as accommodation
- › Ski/MTB passes, equipment and lessons, water park wellbeing packages, etc.



SAS Châtel Réservation with a capital of 56 780 € | 428 842 892 RCS THONON LES BAINS  
Guarantee: Atradius | Credit insurance N V - 92596 LEVALLOIS PERRET Cedex  
Certificate of registration IMO 74100023 | Insurance: Gritchen Affinity 18 024 BOURGES Cedex





**châtel** Portes du Soleil  
*BOOKING*  
**RÉSERVATION**

Tel. 33 (0)4 50 73 30 22  
 Fax. 33 (0)4 50 81 30 34  
 info@chatelreservation.com

**chatelreservation.com**

## EARLY *booking*

BOOK EARLY AND PAY LESS!

**-10%** off selected apartments for all bookings made **BEFORE 15 OCTOBER 2017**

## CHILDREN SKI *for free*

AT CHRISTMAS AND EASTER!

One ski pass for under 12s free with each adult ski pass purchased

Offer applies from 23 to 30 December 2017 (for ski passes valid for 6 days) and from 31 March 2018 (for ski passes valid for 3 days and more).

## SERVICES *à la carte*

QUALIFY FOR SPECIAL RATES

Book

Up to

- › ski passes,
- › equipment hire,
- › ski lessons,
- › 'relaxation and wellbeing' packages,
- › admission to the water park,
- › resort transfers,
- › pocket WiFi

**-30%**

off the public prices.

at the same time as your accommodation.

## PRICEBUSTER *breaks*

Staying in apartment from

**€250**

Staying in a hotel from

**€575**

**7 NIGHTS' ACCOMMODATION + 6-DAY CHÂTEL LIBERTÉ SKI PASS**

57 ski lifts, 130 km of pistes!

Prices applicable from 6 January 2017 to 13 January 2018 and from 31 March 2018. Apartment price: per adult per week, based on 4 people sharing a studio (private landlord). Hotel price: per adult, half board, based on a double room.



# ESTATE agents

Châtel's estate agents guarantee you a professional service:

## Holiday Rentals

- > a quick comeback on rental availability
- > a wide choice, from small studios to large chalets, in all categories
- > an accurate description of the accommodation on offer
- > clear rental conditions, fixed by contract
- > a reception service on arrival and assistance during your stay
- > services to ensure you have a hasslefree holiday: hire of bed linen, cleaning...
- > great deals available, with cancellation insurance and 'all-inclusive' packages: accommodation + ski pass + (optional) ski equipment hire.

## Sales

The estate agents of Châtel have years of experience, and also specialise in real estate transactions. They offer:

- > an extensive selection of new and older properties
- > a very wide range of prices
- > chalets, traditional Savoyard farmhouses, land, apartments and studios
- > in Châtel and the surrounding area

## AGENCE CRUZ



Rentals and sales

66 Route du Linga  
Tel. 33 (0)4 50 73 24 94  
[info@agencecruz.com](mailto:info@agencecruz.com)  
[www.agencecruz.com](http://www.agencecruz.com)

G3 1

## ALTITUDE IMMOBILIER



Rentals and sales

105 Route de Vannes  
Tel. 33 (0)4 50 73 21 68  
[info@altitudeimmobilier.com](mailto:info@altitudeimmobilier.com)  
[www.altitudeimmobilier.com](http://www.altitudeimmobilier.com)

G3 2

## CHÂTEL IMMO



Rentals and sales

81 Chemin de l'Etringa  
Tel. 33 (0)457 432 458  
[vente@chatel-immo.com](mailto:vente@chatel-immo.com)  
[www.chatel-immo.com](http://www.chatel-immo.com)

H3 10

## FR IMMOBILIER



Sales

157 Route du Linga  
Tel. 33 (0)4 50 73 45 07  
[chatel@fr-immobilier74.com](mailto:chatel@fr-immobilier74.com)  
[www.fr-immobilier74.com](http://www.fr-immobilier74.com)

G3 11

## IMMOBILIÈRE DU VAL



Rental, sale and management

165 Route de Thonon  
Tel. 33 (0)4 50 73 20 67  
[info@immoduval.com](mailto:info@immoduval.com)  
[www.immoduval.com](http://www.immoduval.com)

F3 3

## BO IMMOBILIER



Rentals and sales

12 Route du Centre  
Tel. 33 (0)4 50 73 57 10  
[location@bo-immobilier.immo](mailto:location@bo-immobilier.immo)  
[www.immobilier-chatel.com](http://www.immobilier-chatel.com)

G3 6

## LB IMMOBILIER



Rental, sale and management

148 Route de Vannes  
Tel. 33 (0)4 50 76 78 85  
[contact@lbchatel-immobilier.com](mailto:contact@lbchatel-immobilier.com)  
[www.groupe-lb-immobilier.com](http://www.groupe-lb-immobilier.com)

H3 4

## ROCA IMMOBILIER



Rentals and sales

585 Route du Boude  
Tel. 33 (0)6 62 44 62 88  
[contact@location-chatel-montagne.com](mailto:contact@location-chatel-montagne.com)  
[www.chatel.immo](http://www.chatel.immo)

E2 9



# HOTELS *with restaurant*

Snuggle up in the warm, be pampered from dawn to dusk and discover and savour the pleasures of winter.



For details of hotel availability go to [www.chatel.com](http://www.chatel.com)

## MACCHI

★★★★



### Macchi E. Family

94 Chemin de l'Etringa  
Tel. 33 (0)4 50 73 24 12  
contact@hotelmacchi.com  
[www.hotelmacchi.com](http://www.hotelmacchi.com)

H3 **1**



28 rooms



½ board starting from € 142	Room only starting from € 126
Full board -	Breakfast € 17

## ARC EN CIEL

★★★



### M. & Mme Gonon B.

1204 Route du Petit Châtel  
Tel. 33 (0)4 50 73 20 08  
contact@hotel-arcenciel.fr  
[www.hotel-arcenciel.fr](http://www.hotel-arcenciel.fr)

B2 **2**



22 rooms



½ board from € 65 to € 89	Room only on request
Full board +€ 15	Breakfast € 10

## AUBERGE DE LA DRANSE

★★★



### M. Rubin

121 Route de Pré-la-Joux  
Tel. 33 (0)4 50 73 20 57  
hotel@aubergedeladranse.com  
[www.aubergedeladranse.com](http://www.aubergedeladranse.com)

L6 **11**



14 rooms



½ board from € 65 to € 90	Room only from € 85 to € 120
Full board -	Breakfast € 12

## BELALP

★★★



### M. & Mme Trincaz J.

382 Route de Vonnas  
Tel. 33 (0)4 50 73 24 39  
belalpchatel@aol.com  
[www.hotelbelalp.com](http://www.hotelbelalp.com)

H3 **4**



25 rooms



½ board from € 75 to € 120	Room only from € 95 to € 160
Full board -	Breakfast € 10

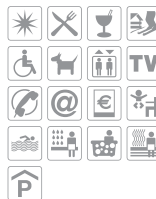
## FLEUR DE NEIGE ★★★



### Trincaz P. & S. Family

564 Route de Vonnes  
Tel. 33 (0)4 50 73 20 10  
information@hotel-fleurdeneige.fr  
[www.hotel-fleurdeneige.fr](http://www.hotel-fleurdeneige.fr)

I3 **5** Maître-Restaurateur



23 rooms



½ board from € 105 to € 185	Room only from € 140 to € 290
Full board -	Breakfast € 15

## KANDAHAR ★★★



### M. & Mme Trincaz A.

1620 Route de la Dranse  
Tel. 33 (0)4 50 73 30 60  
lekandahar@wanadoo.fr  
[www.lekandahar.com](http://www.lekandahar.com)

F5 **6**



8 rooms



½ board from € 68 to € 86	Room only from € 90 to € 100
Full board +€ 18	Breakfast € 10



## PERDRIX BLANCHE ★★★



### M. Vuarand G.

4172 Route de Pré-la-Joux  
Tel. 33 (0)4 50 73 22 76  
info@laperdrixblanche.com  
[www.laperdrixblanche.com](http://www.laperdrixblanche.com)

M9 **7**



10 rooms



½ board from € 88 to € 119	Room only from € 140 to € 160
Full board -	Breakfast € 10



## SCHUSS ★★★



### Grillet Munier-Lefrancois Family

353 Route de Pré-la-Joux  
Tel. 33 (0)4 50 73 24 53  
le-schuss@wanadoo.fr  
[www.hotel-leschuss.fr](http://www.hotel-leschuss.fr)

M6 **23**



16 rooms



½ board from € 84 to € 135	Room only from € 100 to € 190
Full board -	Breakfast € 12



## TREMLIN ★★★



### Clément-Lacroix Family

529 Route du Linga  
Tel. 33 (0)4 50 73 23 06  
contact@hotel-le-tremplin.com  
[www.hotel-le-tremplin.com](http://www.hotel-le-tremplin.com)

I3 **8**



26 rooms



½ board from € 80 to € 115	Room only from € 95 to € 130
Full board -	Breakfast € 12



## BERGERIE ★★



### Sarl La Bergerie

530 Route du Linga  
Tel. 33 (0)4 50 73 27 20  
hotelbergerie@gmail.com  
[www.hotelbergerie.com](http://www.hotelbergerie.com)

I3 **12**



24 rooms



½ board from € 64 to € 88	Room only from € 73 to € 119
Full board -	Breakfast € 10





## RENARD

★★



*M. & Mme Brown*

270 Route de la Dranse  
Tel. 33 (0)4 50 73 26 20  
renard-hotel@wanadoo.fr  
[www.renardhotel.com](http://www.renardhotel.com)

J5 21



5 rooms



½ board from € 95 to € 115	Room only from € 142 to € 182
Full board -	Breakfast € 9

## ROITELET

★★



*Marchand P. Family*

731 Route de Thonon  
Tel. 33 (0)4 50 73 24 79  
roitelet.hotel@orange.fr  
[www.hotel-le-roitelet.com](http://www.hotel-le-roitelet.com)

D3 22 Maître-Restaurateur



18 rooms



½ board from € 64 to € 88	Room only from € 78 to € 94
Full board +€ 23	Breakfast € 8.50 / € 12.50

## TRIOLETS



*Grillet-Aubert C. Family*

608 Route du Petit Châtel  
Tel. 33 (0)4 50 73 20 28  
info@lestriolets.com  
[www.lestriolets.com](http://www.lestriolets.com)

D2 25



20 rooms



½ board from € 74 to € 110	Room only from € 90 to € 156
Full board -	Breakfast € 12

## L'ESCALE



*Maxit Family*

Super-Châtel  
Tel. 33 (0)4 50 73 64 38  
reservations@escalechotel.com  
[www.escalechotel.com](http://www.escalechotel.com)

G1 26



26 rooms



½ board from € 70 to € 90	Room only from € 70 to € 120
Full board -	Breakfast € 13

## GENERAL TERMS AND CONDITIONS *hotels*

Price per day for 2 persons occupying a double room. Minimum stay: 3 days. The rates shown are for information purposes and are not contractual.

It is general practice for the hotels to require a deposit equal to three days bed & board. The deposit paid on reservation will remain the property of the hotel in event of a no-show or cancellation. The deposit will be refunded at the end of the stay only if the reservation is taken up in full. The hotel will ensure your room is available as early as possible in the day; please vacate your room before 10 am on the day of your departure.

Most hotels make the following additional allowances and charges:

- > Single occupation: 30%
- > Discount on third bed: -10%
- > Children from 2 to 5: -50%
- > Children from 5 to 12: -20%

Prices are as follows:

- > ½-board: price per person per night
- > Full board: price to be added to the ½-board price, per person per night
- > Room only: occupied by two people
- > Breakfast: price per person per night



# HOTELS

*without restaurant*



For details of hotel availability go to [www.chatel.com](http://www.chatel.com)

## AU BOIS DE LUNE ★★★



*Mlle Trincaz M.*

1725 Route de la Dranse  
Tel. 33 (0)4 50 81 36 94  
aiboisdelune@wanadoo.fr  
[www.aiboisdelune.com](http://www.aiboisdelune.com)

F5 **3**



11 rooms 

½ board on request	Room only from € 95 to € 130
Full board -	Breakfast € 11

## ARMAILLIS ★★



*Mme Simond F.*

166 Route du Centre  
Tel. 33 (0)4 50 73 24 36  
hotellesarmaillis@orange.fr  
[www.lesarmaillis-chatel.fr](http://www.lesarmaillis-chatel.fr)

F2 **10**



10 rooms

½ board -	Room only € 80
Full board -	Breakfast € 9.50

## CHOUCAS ★★



*Mme Rosset  
Mutillod E.*

303 Route de Vannes  
Tel. 33 (0)4 50 73 22 57  
info@hotel-lechoucas.com  
[www.hotel-lechoucas.com](http://www.hotel-lechoucas.com)

H3 **16**



12 rooms

½ board -	Room only from € 80 to € 86
Full board -	Breakfast € 9.50

## ALPAKA



*Alexine*

101 Route de la Béchnigne  
Tel. 33 (0)6 85 75 84 70 | 33 (0)4 50 73 33 02  
hotelpaka@gmail.com  
[www.hotelpaka.fr](http://www.hotelpaka.fr)

F3 **9**



12 rooms 

½ board -	Room only -
Full board -	Breakfast -

Hotels without restaurant

# HOLIDAY residences

The independence of having your own place with the added bonus of all the amenities and services of a hotel.



For details of hotel availability go to [www.chatel.com](http://www.chatel.com)

## LES CHALETS D'ANGÈLE ★★★★★

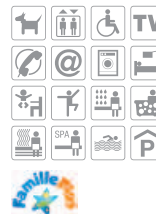
Holiday residence



### CGH Résidence & Spa

980 Route de la Béchnigne  
Reservation: 33 (0)4 50 33 10 96  
contact@cgh-residences.com  
Residence: 33 (0)4 50 17 38 68  
[www.cgh-residences.com](http://www.cgh-residences.com)

E-F4 1



Per apartment per week



Studio (sleeps 2) from € 700 to € 1,708	2-room (sleeps 2/4) from € 875 to € 2,135
3-room (sleeps 4/6) from € 1,043 to € 2,660	4 or 5-room (sleeps 6/10) from € 1,372 to € 4,515

## LE GRAND ERMITAGE ★★★★★

Holiday residence



### Résidence Nemea

35 Chemin de Vonnes  
Tel. 33 (0)5 57 26 99 31  
Fax. 33 (0)5 57 26 99 27  
info@nemea.fr  
[www.nemea.fr](http://www.nemea.fr)

J2 5



Per apartment per week



Studio (sleeps 2) -	2-room (sleeps 4) from € 480 to € 1,500
3-room (sleeps 6) from € 580 to € 1,790	4-room (sleeps 8) from € 800 to € 2,475

## LES FERMES DE CHÂTEL ★★★★★

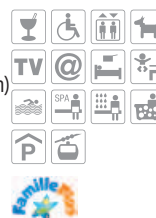
Holiday residence



### Résidence Odalys

60 Chemin de Sous-le-Crêt  
Reservation: 0825 562 562 (0,18cts/min)  
Residence: 33 (0)4 50 17 15 50  
odalys@odalys-vacances.com  
[www.odalys-vacances.com](http://www.odalys-vacances.com)

G2-3 6



Per apartment per week



2-room (sleeps 2/4) from € 550 to € 1,810	3-room (sleeps 6/8) from € 690 to € 2,340
4-room (sleeps 8) from € 920 to € 2,675	5-room split-level apt. (sleeps 10) from € 1,100 to € 3,085



## LA FLÈCHE D'OR ★★★



### M. & Mme Rubin R. *Spa la Fée bien-être*

973 Route de Vannes  
Tel. 33 (0)4 50 73 25 80  
info@laflechedor.com  
[www.laflechedor.com](http://www.laflechedor.com)

J2 **2**



Holiday residence

3-room studio with ½ board <b>from € 75 to € 98</b>	Full board <b>+€ 20</b>
Breakfast <b>€ 10</b>	-

## LE GRAND LODGE ★★★



### Résidence Nemea

41 Chemin de Vannes  
Tel. 33 (0)5 57 26 99 31  
Fax. 33 (0)5 57 26 99 27  
info@nemea.fr  
[www.nemea.fr](http://www.nemea.fr)

J3 **3**



Holiday residence

Per apartment per week	
2-room (sleeps 4) <b>from € 275 to € 1,100</b>	2-room (sleeps 6) <b>from € 360 to € 1,370</b>
3-room (sleeps 6) <b>from € 450 to € 1,620</b>	3-room (sleeps 8) <b>from € 510 to € 1,770</b>

## CHALET RÉSIDENCE JOSÉPHINE



### M. & Mme Vesin JP.

1182 Route des Freinets  
Tel. 33 (0)4 50 73 32 29  
Fax. 33 (0)4 50 81 30 63  
contact@v174.com  
[www.v174.com](http://www.v174.com)

J4 **4**



Residence with hotel services

Sleeping 2 to 8 / weekly rentals	
Apartment from <b>€ 450</b>	-
-	-





For details of hotel availability go to [www.chatel.com](http://www.chatel.com)

## LE P'TIT CORNILLON



*M. & Mme Florent Crépy-Marglais*

452 Route de Pré-la-Joux  
Tel. 33 (0)4 78 53 07 74 / 33 (0)4 50 81 35 49  
[bienvenue@lepetitcornillon.fr](mailto:bienvenue@lepetitcornillon.fr)  
[www.lepetitcornillon.fr](http://www.lepetitcornillon.fr)  
M6 



**Holiday and stopover gîte**

Gîte sleeping 20. Accommodation for individuals, families and groups. Bed and breakfast or accommodation only.



## 1861 CHÂTEL HOSTEL



*M. Baud*

1423 Route de Pré-la-Joux  
Tel. 33 (0)4 50 81 05 03  
[resa@1861chatelhostel.com](mailto:resa@1861chatelhostel.com)  
[www.1861chatelhostel.com](http://www.1861chatelhostel.com)  
K8 



**Youth hostel**

Accommodation for individuals, families and groups. Bed and breakfast.

## CENTRAL HOSTEL CHÂTEL



*M. Bardy Tomas*

204 Route du Linga  
Tel. 33 (0)6 86 35 44 56  
[centralhostelchatel@gmail.com](mailto:centralhostelchatel@gmail.com)  
[www.centralhostelchatel.com](http://www.centralhostelchatel.com)  
H3 



**Youth hostel**

Accommodation for individuals, families and groups. Bed and breakfast.

## ARTES - LES COMBELLES \*\*\*



*Artes Tourisme*

87 Chemin du Pessat  
Tel. 33 (0)3 28 04 54 54  
[resa@artes.asso.fr](mailto:resa@artes.asso.fr)  
[www.hotellescombelles.com](http://www.hotellescombelles.com)  
L6 



**Other accommodation**

Accommodation for individuals, families and groups. Bed and breakfast or ½ board or full board.



## CHALET AARON



*M. & Mme Anderson*

744 Route de Pré-la-Joux  
Tel. 33 (0)4 50 73 21 63  
info@alpinequests.com  
[www.alpinequests.com](http://www.alpinequests.com)  
I8



½ board.

Chambres d'hôtes

## CHALET CARNAUBA



*Sarl Alpine Descents*

922 Route du Linga  
Tel. 33 (0)6 33 59 88 95  
bookings@alpinedescents.com  
[www.alpinedescents.com](http://www.alpinedescents.com)  
J3



Bed and breakfast.

Chambres d'hôtes

## CHALET LAC DE VONNES



*M. & Mme Parker*

1014 Route de Vonnés  
Tel. 33 (0)4 50 73 68 71  
holidays@alpinebreaks.com  
[www.alpinebreaks.com](http://www.alpinebreaks.com)  
J2



Bed and breakfast or ½ board.

Chambres d'hôtes

## CHALET LA SONNAILLE



*M. Stevenson – Cook*

152 Chemin des Argeats  
Tel. 33 (0)4 50 73 34 92 | 33 (0)6 08 86 30 22  
sue@snowfocus.com  
[www.snowfocus.com/lasonnaïlle.html](http://www.snowfocus.com/lasonnaïlle.html)  
K2



Accommodation for families and groups. Bed and breakfast or ½ board or accommodation only.

Chambres d'hôtes

## PICTOGRAM *key*

	Holiday vouchers
	Open all year round
	Restaurant
	Bar
	Live music
	All-inclusive or courses
	Disabled
	Pets welcome
	Lift
	TV

	Telephone
	Internet access
	Safe in rooms
	Kitchenette in rooms
	Laundrette
	Seminar room
	Games room
	Baby-sitting
	Baby kit (high chair & cot)
	Swimming pool

	Spa
	Sauna
	Steam bath
	Jacuzzi
	Gym
	Car park or garage
	Gondola lift
	Private shuttle service
	Exploring nature



**Famille Plus-certified accommodation providers:** services, little touches and pricing policy tailored especially to families.

More information:  
[chatelenfamille.com](http://chatelenfamille.com)

Maître-restaurateur: national distinction recognising the top professionals in the traditional restaurant trade.


# HOTELS FOR GROUPS, *holiday centres*

With its tradition as a rural haven, its outstanding setting and whole range of fun, sporting and educational activities, Châtel is a particularly good destination for groups.

The Holiday Centres in Châtel are available for short and long stays and offer various accommodation options (full board, half board, etc.)

- > school groups
- > other groups
- > individuals and families

All accommodation is approved by the French Ministry of Education and Department of Social Cohesion.

 New standards of accessibility for wheelchair users are in force

## LA CASCADE

110 beds - 3 classrooms



*Annie & Lionel Crépy*

1694 Route du Linga  
Tel. / Fax. 33 (0)4 50 73 22 77  
cascade74@wanadoo.fr  
www.cascade74.com

K5 **1**



## LE CLOS SAVOYARD

105 beds - 3 classrooms



*M. Favre W.*

864 Route de Thonon  
Tel. / Fax. 33 (0)4 50 81 36 43  
info@clos-savoyard.fr  
www.clos-savoyard.fr

C3 **2**



## LES COCCINELLES

60 beds - 2 classrooms



*M. Vuarand E.*

184 Route de Thonon  
Tel. 33 (0)4 50 72 12 02  
eric.mont.joye@wanadoo.fr

F3 **3**



## LA COLLINE AUX OISEAUX

110 beds - 3 classrooms



*M. Hauteville T.*

397 Route de Thonon  
Tel. 33 (0)4 50 73 22 72  
colline.aux.oiseaux@wanadoo.fr  
www.collinauxoiseaux.com

E3 **4**



## LES CYCLAMENS

140 beds - 5 classrooms



*M. Grillet P.*

1484 Route du Petit Châtel  
Tel. 33 (0)4 50 73 23 01  
lescyclamens74@orange.fr  
www.lescyclamens.com

B2 **5**



## LE NID ALPIN

101 beds - 3 classrooms



*M. Vuarand A.*

477 Route du Linga  
Tel. 33 (0)4 50 73 22 00  
lenidalpin@orange.fr  
www.lenidalpin.fr

I3 **7**



## L'OURS BLANC

150 beds - 5 classrooms



*M. Macchi M.*

364 Route du Linga  
Tel. 33 (0)4 50 73 23 43  
contact@oursblanc74.com  
www.oursblanc74.com

H3 **8**



## LE SOLEIL COUCHANT

120 beds - 4 classrooms



*M. Vuarand E.*

337 Route du Petit Châtel  
Tel. 33 (0)4 50 73 24 27  
33 (0)6 09 49 80 01  
lesoleil.couchant@live.fr

E3 **12**





## LE SOLEIL LEVANT

134 beds - 4 classrooms



*Mme Berthet C.*

195 Route du Petit Châtel  
Tel. 33 (0)4 50 73 25 20 + answering  
33 (0)6 81 37 32 66 machine  
le.soleil.levant@club-internet.fr

E3 **13**



## VACANCES VOYAGES LOISIRS

50 beds  
2 classrooms



292 Route des Freinets  
Tel. 33 (0)1 45 73 40 27  
janine.ribeiro@vvl.org  
[www.vvl.org](http://www.vvl.org)

G3 **10**



## LE VAL JOLI

140 beds - 4 classes



*Mme Cruz-Mermy B.*

671 Route de Thonon  
Tel. 33 (0)4 50 73 33 02  
33 (0)6 80 15 59 80  
val-joli@wanadoo.fr  
[www.val-joli.com](http://www.val-joli.com)

D3 **14**



# CAMP SITE



Winter 2017/2018 rates  
Open from 22 December 2017  
to 22 April 2018.  
Reservation compulsory  
during the winter.

## L'OUSTALET ★★★★★

Outdoor accommodation, winter caravanning, rentals



*Thoule Family*

1428 Route des Freinets  
Tel. 33 (0)4 50 73 21 97  
contact@oustalet.com  
[www.oustalet.com](http://www.oustalet.com)

K5 **C**



### Price per pitch (swimming included)

One-week package for 2 persons + pitch

> High season ..... €224

One-day package for 2 persons + pitch

> Low season ..... €25.70

> Mid season ..... €30

Season site pass available (22/12/17 to 22/04/18)

Full heated toilet and shower facilities included.

Electrical hook-ups available (supplement payable).

Fully equipped mobi'chalet for rent, 2 to 5 pers. (swimming included)

One-week package for 4

> Low season ..... €430

> Mid season ..... €720

> High season ..... €820

Possibility of minimum 2-nights stay or more out of school holidays.

# PRIVATE APARTMENTS... to rent

Please note: the information below was provided by private individuals. The tourist office declines any liability for any inaccuracies in the details provided.

- > Map: location on the village map
- > Class: classified by the prefecture
- > Nb: number
- > NC: unclassified
- > IC: classification pending

Area	Map	Class.	Nb	Name of chalet	Capacity	m <sup>2</sup>	Owner's name	Telephone	Fax or mobile	Internet	E-mail
<b>CLASSIFIED STUDIOS</b>											
Centre	G2	**	1	<b>Les Rhododendrons</b>	4	31	Mme HARDY Mireille	33(0)3 24 58 21 79	33(0)6 68 27 23 66	chatel.monsite-orange.fr	mirhardy08@gmail.com
Centre	G2	**	1	<b>Les Rhododendrons</b>	3 to 4	30	Mme LABORIE	33(0)1 46 65 85 77	33(0)6 81 50 04 67	chatel-74.e-monsite.com	laborie.simone@wanadoo.fr
Centre	G2	**	1	<b>Les Lutins</b>	3	30	M VUARAND Germain	33(0)4 50 73 22 82	33(0)4 50 81 31 43	www.appart-chatel.com	info@appart-chatel.com
Freinets/Loy	I4	**	1	<b>Le Forsythia</b>	4	20	M. HEINRICH Michel	33(0)3 69 06 87 08	33(0)6 25 27 10 73		michel.heinrich@yahoo.fr
Freinets/Loy	G3	IC	1	<b>Squaw Valley</b>	4	25	M. VUARAND Dominique	33(0)4 50 73 23 05	33(0)6 75 53 01 05	sites.google.com/site/squawvalley74	squawvalley74@gmail.com
Linga	L6	**	1	<b>Les Portes du Soleil</b>	5	25	M. COTTON Daniel	33(0)4 50 36 36 73	33(0)6 85 01 38 98		caille.marjo@orange.fr
Linga	L6	**	1	<b>Les Mouflons</b>	4	32	M. CREPY Maurice	33(0)4 50 73 38 26	33(0)6 87 26 32 93		crepymaurice@orange.fr
Petit Châtel	B2	**	1	<b>Bel Horizon</b>	2	26	Mme VUARAND Ernest	33(0)4 50 73 21 15	33(0)6 81 46 86 34		suzannevuarend@orange.fr
<b>CLASSIFIED 2-ROOM APARTMENTS</b>											
Béchnigne	F3	**	1	<b>Les Gentianes</b>	4	23	M. CALLY Didier		33(0)6 61 47 98 08		nadine.cally@neuf.fr
Béchnigne	F4	**	1	<b>Le Bouquetin</b>	4	2756	M. DONNEZ Claude	33(0)3 89 72 80 64	33(0)6 03 90 03 81	www.homelidays.com/hebergement/pl650102	contact74chatel@gmail.com
Béchnigne	E4	**	1	<b>Le Val d'Or</b>	3	27	M. GRILLET-PAYSAN Simon	33(0)4 50 73 33 81	33(0)6 77 88 04 65	www.facebook.com/levaldorchatel/	levaldor@orange.fr
Boude	E2	***	1	<b>Le Mirador</b>	7	60	M. BURNET Georges	33(0)4 50 73 20 93	33(0)4 50 73 20 93		bernardbordet@orange.fr
Centre	E2	**	1	<b>Les Balcons du Ciel</b>	4 to 5	50	M. BURNET Jocelin	33(0)4 50 73 20 93	33(0)6 08 52 50 04	www.lesbalconsduciel.com	jocelin.burnet@orange.fr
Centre	G2	**	1	<b>Les Lutins</b>	4	30	M VUARAND Germain	33(0)4 50 73 22 82	33(0)4 50 81 31 43	www.appart-chatel.com	info@appart-chatel.com
Freinets/Loy	H3	***	1	<b>Les Iris</b>	4 to 6	50	M. ANDERSON Richard	33(0)4 50 73 39 28	33(0)6 32 45 37 33	www.lapesse.com	info@lapesse.com
Freinets/Linga	K5	**	1	<b>Chamois d'Or</b>	4 to 5	30	Mme TINTIGNAC Claire	33(0)4 50 59 67 35	33(0)6 86 27 75 91	www.abritel.fr/location-vacances/p873326	ctintignac@hotmail.com
Linga	L6	**	1	<b>Les Mouflons</b>	4	31	M. CREPY Maurice	33(0)4 50 73 38 26	33(0)6 87 26 32 93		crepymaurice@orange.fr
Linga	M6	**	1	<b>Les Campanules</b>	4	26	M. DONNEZ Claude	33(0)3 89 72 80 64	33(0)6 03 90 03 81	www.homelidays.com/hebergement/pl650101	contact74chatel@gmail.com
Linga	L6	**	1	<b>Les Covillets</b>	5	34	M. HEMARD J.-C.	33(0)3 26 80 11 12	33(0)3 26 80 59 42		JC.HEMARD@wanadoo.fr
Linga	K5	**	1	<b>Le Christina</b>	4	25	M. LEPETIT Eric		33(0)6 50 82 79 84	info.chatel.com/2-pieces-le-christina.html	ecabp@orange.fr
Petit Châtel	D2	**	1	<b>Hameau des 4 Saisons</b>	4	34	Mme GIRARD	33(0)2 31 72 08 00	33(0)6 47 38 32 53	loca.chatel.free.fr	loca.chatel@free.fr
Petit Châtel	C2	**	2	<b>Le Chardonneret</b>	5 & 4	50 & 37	M. GRILLET-AUBERT Stéphane	33(0)4 50 81 38 02	33(0)6 82 93 46 01	www.lechardonneret.com	stephan.grillet-aubert@orange.fr
Petit Châtel	B2	**	1	<b>Bel Horizon</b>	5	53	Mme VUARAND Ernest	33(0)4 50 73 21 15	33(0)6 81 46 86 34		suzannevuarend@orange.fr
Vonnes	J2	**	2	<b>Chalet La Gentiane</b>	4	32	Mlle MAXIT Muriel	33(0)4 50 73 27 00	33(0)6 81 11 18 96	www.chatel-location-lagentiane.com	maxit.gentiane@laposte.net
<b>CLASSIFIED 3-ROOM APARTMENTS</b>											
Béchnigne	F3	***	1	<b>Les Marmousets</b>	6	70	Mme VUARAND Corinne	33(0)4 50 81 34 61	33(0)6 75 03 44 48		info@chatelreservation.com
Boude	E2	**	1	<b>Le Mirador</b>	7	85	M. BURNET Georges	33(0)4 50 73 20 93	33(0)4 50 73 20 93		bernardbordet@orange.fr
Boude	F2	***	1	<b>Les Boudimes</b>	6	80	M. GRILLET Jean-Francois	33(0)4 50 73 36 59	33(0)6 82 85 44 32	www.boudimes.com	
Boude	F2	**	1	<b>Les Oisillons</b>	6	55	Mlle MAXIT Viviane	33(0)4 50 73 36 64	33(0)6 25 71 12 15	www.lesoisillons.com	info@lesoisillons.com
Centre	E2	**	1	<b>Les Balcons du Ciel</b>	6	60	M. BURNET Jocelin	33(0)4 50 73 20 93	33(0)6 08 52 50 04	www.lesbalconsduciel.com	jocelin.burnet@orange.fr
Centre	H3	**	1		5	50	M. GRILLET-AUBERT Charles	33(0)4 50 73 24 37	33(0)4 50 73 24 37	www.charles-sports.com	charlesport@wanadoo.fr
Centre	G3	***	1	<b>Les Rochassons</b>	6	45	M. LEGOFF		33(0)6 08 18 93 16	location-chatel.e-monsite.com	bugs.legoff@orange.fr
Centre	G2	****	1	<b>Les Fermes de Châtel</b>	6	51,89	Mme MOREIRA		33(0)6 27 39 11 22	www.locationappartement-chatel.com	jmmalagueta@wanadoo.fr
Centre	G2	***	2	<b>Les Lutins</b>	6 to 8	56 & 71	M VUARAND Germain	33(0)4 50 73 22 82	33(0)4 50 81 31 43	www.appart-chatel.com	info@appart-chatel.com
Etringa	F3	***	1	<b>Le Grand Tétrás</b>	4 to 6	49	M. CHANTRAINE Frédéric		33(0)6 50 57 68 34	www.abritel.fr/location-vacances/p1398475	myriamchntn@gmail.com
Freinets/Loy	G3	IC	2	<b>Squaw Valley</b>	6	45	VUARAND Dominique	33(0)4 50 73 23 05	33(0)6 75 53 01 05	sites.google.com/site/squawvalley74	squawvalley74@gmail.com
Linga	K6	***	1	<b>La Tocade</b>	4 to 6	60	M. SCHNEIDER	33(0)3 88 95 08 56	33(0)6 73 67 90 10	http://latocade.wifeo.com	schneider.fabrice@neuf.fr
Petit Châtel	B2	**	1	<b>La Rose des Vents</b>	6	69	M. GRILLET-AUBERT Florent	33(0)4 50 73 32 65		www.lepetitchezsoi.com	info@lepetitchezsoi.com
Petit Châtel	B2	**	1	<b>Petit Chez Soi</b>	5	60	Mme GRILLET-AUBERT R.	33(0)4 50 73 32 65		www.lepetitchezsoi.com	info@lepetitchezsoi.com



Area	Map	Class.	Nb	Name of chalet	Capacity	m <sup>2</sup>	Owner's name	Telephone	Fax or mobile	Internet	E-mail
Petit Châtel	C2	** / **	2	<b>Chardonneret/Pensée des Alpes</b>	6 & 5	60 & 65	M. GRILLET-AUBERT Stéphane	33(0)4 50 81 38 02	33(0)6 82 93 46 01	www.lechardonneret.com	stephan.grillet-aubert@orange.fr
Petit Châtel	B2	***	1	<b>Les Chalets du Morclan</b>	6	48	M. ROIGNANT Jean Noël	33(0)2 98 29 75 11	33(0)6 07 34 92 13	www.chatel-evasion.com	jeanno@chatel-evasion.com
Petit Châtel	B2	**	1	<b>Bel Horizon</b>	6	60	Mme VUARAND Ernest	33(0)4 50 73 21 15	33(0)6 81 46 86 34		suzanne.vuarand@orange.fr
Vonnes	H2	***	1	<b>Les Névés</b>	4 to 6	80	M. BAUD - RUBIN	33(0)4 50 26 49 95	33(0)6 12 15 36 48		sabine.baud@gmail.com
Vonnes	J2	***	2	<b>La Flèche d'Or</b>	3 to 6	45 & 50	M. RUBIN Roger	33(0)4 50 73 25 80		www.laflechedor.com	info@laflechedor.com
<b>CLASSIFIED 4-ROOM APARTMENTS</b>											
Béchnigne	F4	***	1	<b>Chalet Sandettie</b>	7	61	Mme GHEWY Edith		33(0)6 80 18 30 52		jean-marc.ghewy@numericable.fr
Boude	E2	**	1	<b>Le Mirador</b>	12	110	M. BURNET Georges	33(0)4 50 73 20 93	33(0)4 50 73 20 93		bernardbordet@orange.fr
Centre	E2	**	1	<b>Les Balcons du Ciel</b>	9	85	M. BURNET Jocelin	33(0)4 50 73 20 93	33(0)6 08 52 50 04	www.lesbalconsduciel.com	jocelin.burnet@orange.fr
Freinets/Loy	G3	IC	1	<b>Squaw Valley</b>	8 to 10	65	M. VUARAND Dominique	33(0)4 50 73 23 05	33(0)6 75 53 01 05	sites.google.com/site/squawvalley74	squawvalley74@gmail.com
Linga	M6	**	1	<b>La Ferme du Mont de Grange</b>	6	54	M. CREPY-MARGLAIS Florent	33(0)4 50 81 35 49	33(0)6 78 53 07 74	www.lepetitcornillon.fr	bienvenue@lepetitcornillon.fr
Linga	L6	IC	1	<b>Les Giboulées</b>	7	75	M. GRILLET-MUNIER Camille	33(0)4 50 73 24 53	33(0)4 50 73 38 74	www.locationappartement-chatel.fr	le-schuss@wanadoo.fr
Petit Châtel	B2	**	2	<b>La Rose des Vents</b>	6	69	M. GRILLET-AUBERT Florent	33(0)4 50 73 32 65		www.lepetitchezsoi.com	info@lepetitchezsoi.com
Petit Châtel	C2	**	3	<b>Chardonneret/Pensée des Alpes</b>	9 to 10	80 & 100	M. GRILLET-AUBERT Stéphane	33(0)4 50 81 38 02	33(0)6 82 93 46 01	www.lechardonneret.com	stephan.grillet-aubert@orange.fr
Petit Châtel	B2	***	1	<b>Les Chalets du Morclan</b>	8	70	M. ROIGNANT Jean Noël	33(0)2 98 29 75 11	33(0)6 07 34 92 13	www.chatel-evasion.com	jeanno@chatel-evasion.com
Vonnes	I2	***	1	<b>Résidence de Vonnes</b>	8	78	M. GOMBAULT Jacky	33(0)3 25 37 71 09	33(0)3 25 37 71 09		jacky.gombault@orange.fr
<b>CLASSIFIED 5-ROOM APARTMENTS</b>											
Centre	E2	**	1	<b>Les Balcons du Ciel</b>	10	100	M. BURNET Jocelin	33(0)4 50 73 20 93	33(0)6 08 52 50 04	www.lesbalconsduciel.com	jocelin.burnet@orange.fr
Centre	G3	***	1	<b>La Lavandière</b>	8 to 12	128	Mme FABRE Patricia	33(0)6 87 31 18 19	33(0)4 50 73 30 49	www.lalavandiere.fr	fabre.patricia74@gmail.com
Grandes Moulilles	C4	***	1	<b>Le Cocon Châtellan</b>	10	138	M. VUARAND Jean-Luc	33(0)6 87 26 13 49	33(0)4 50 73 33 64	www.gites-de-france.com/Chalet-Gite-Le-Cocon-Chattellan-7463016.html	lecoconchattellan@hotmail.fr
La Cale	B4	***	1	<b>Entre Nous</b>	8	100	Mme RUBIN Edwige	33(0)6 82 86 31 22	33(0)6 72 22 37 17	www.locationentrenous.fr	locationentrenous@gmail.com
Linga	M6	**	1	<b>Le Chaudron</b>	10 to 12	110	M. CREPY-MARGLAIS Aimé	33(0)4 50 81 30 48			aime.crepy-marglais@orange.fr
Linga	M6	***	1	<b>Chalet l'Ortaz</b>	7 to 8	70	M. CREPY-MARGLAIS Florent	33(0)4 50 81 35 49	33(0)6 78 53 07 74	www.lepetitcornillon.fr	bienvenue@lepetitcornillon.fr
Linga	K4	****	1	<b>Les Cristaux des Neiges</b>	8	105	Mme CREPY Sandrine	41(0)79 586 87 85	33(0)6 83 36 61 14	cristauxdesneigeschatele-monsite.com	s.crepy@laposte.net
<b>CLASSIFIED 6-ROOM APARTMENTS</b>											
Centre	E2	**	1	<b>Les Balcons du Ciel</b>	13	120	M. BURNET Jocelin	33(0)4 50 73 20 93	33(0)6 08 52 50 04	www.lesbalconsduciel.com	jocelin.burnet@orange.fr
Centre	G3	IC	1	<b>La Lavandière</b>	12	128	Mme FABRE Patricia	33(0)6 87 31 18 19	33(0)4 50 73 30 49	www.lalavandiere.fr	fabre.patricia74@gmail.com
Linga/Jardy	F5	IC	1	<b>Au Cœur Savoyard</b>	12	120	M. LEFRANCOIS Yohan	33(0)4 50 73 24 53	33(0)4 50 73 38 74	www.locations-chatel.com	le-schuss@wanadoo.fr
<b>CLASSIFIED 7-ROOM APARTMENTS</b>											
Béchnigne	E4	****	1	<b>Le Val d'Or</b>	10 to 12	170	M. GRILLET-PAYSAN Simon	33(0)4 50 73 33 81	33(0)6 77 88 04 65	www.facebook.com/levaldorchatel/	levaldor@orange.fr
Linga	L6	IC	1	<b>Vue Air Neige</b>	14	140	M. GRILLET MUNIER Camille	33(0)4 50 73 24 53	33(0)4 50 73 38 74	www.locationappartement-chatel.fr	le-schuss@wanadoo.fr
Petit Châtel	B3	****	1	<b>La Roseraie</b>	15	150	Mlle GRILLET-MUNIER Cécile	33(0)4 50 81 00 23	33(0)6 08 16 16 38	www.facebook.com/chaletlaroseraie	ceciledominique-gmz@club-internet.fr
<b>CLASSIFIED INDEPENDENT CHAETS</b>											
Béchnigne	F4	****	1	<b>Chalet Les Noisetiers</b>	15	160	Mme VUARAND Marie-France	33(0)4 50 73 22 76		www.laperdrixblanche.com	locamf@orange.fr
Centre	G2	***	2	<b>Le Castor / Le Cerf</b>	6 to 10	80 & 130	Mme MILLERET		33(0)6 89 93 36 80		lecastor74@gmail.com
Centre	F2	****	1	<b>Lou' Bochu</b>	12 to 14	220	M. VUARAND Stéphane	33(0)4 50 73 24 15	33(0)4 50 73 39 99	www.pierrier.com	stephane.vuarand@wanadoo.fr
Freinets/Loy	H05/E5	***	5	<b>Les Louveteaux</b>	6 to 28	95 to 240	Mme METZ Brigitte	33(0)6 68 37 95 71		www.chalet-chatel.com	contact@chalet-chatel.com
Freinets/Loy	J4	***	1	<b>Chalet L'Optragen</b>	10	128	Mme PAINÉ Coral	33(0)6 83 49 47 38		www.snowtravelholidays.co.uk	coral.dale@wanadoo.fr
La Cale	B4	***	1	<b>La Fouine</b>	5	45	M. RUBIN Gilles	33(0)4 50 73 31 42	33(0)4 50 81 36 00		rubingilles@wanadoo.fr
Linga	L6	IC	1	<b>A l'assaut des neiges</b>	21	300	M. GRILLET-MUNIER Camille	33(0)4 50 73 24 53	33(0)4 50 73 38 74	www.locationappartement-chatel.fr	le-schuss@wanadoo.fr
Linga/Jardy	F5	***	1	<b>L'Orée du Bois</b>	8	72	Mlle GRILLET-MUNIER Cécile	33(0)4 50 81 00 23	33(0)6 08 16 16 38	www.facebook.com/chaletlaroseraie	ceciledominique-gmz@club-internet.fr
Petit Châtel	B2/3	**	1	<b>Chalet Perce-Neige</b>	7	65	Mme GAY-MAILLARD	33(0)6 72 47 31 70	33(0)4 50 70 25 36		anmaillard@wanadoo.fr
Petit Châtel	C1	****	1	<b>Chalet Ferme de la Vora</b>	10	120	M. GRILLET-AUBERT Patrice	33(0)4 50 73 23 01	33(0)6 76 30 85 66	www.lafermedelavora.com	roselynegrilletaubert@orange.fr
Petit Châtel	A2	****	1	<b>Chalet Les Vuargnes</b>	12	170	M. GRILLET-MUNIER Alban	33(0)4 50 81 04 21	33(0)6 72 07 65 10	www.location-chatel-chalet.com	chaletachat@orange.fr
Petit Châtel	B3	****	1	<b>Chalet Les Neiges Eternelles</b>	18	200	Mme GRILLET-MUNIER Sophie		33(0)6 12 68 38 65	www.locationappartement-chatel.fr	sophie-et-ziyadu74@hotmail.fr
Petit Châtel	B3	IC	1	<b>Chalet Tya</b>	10	195	M. LEFRANCOIS Yohan	33(0)4 50 73 24 53	33(0)4 50 73 38 74	www.locations-chatel.com	le-schuss@wanadoo.fr
Petit Châtel	A2	****	1	<b>Chalet Les Frasses</b>	6 to 12	240	M. MAXIT Constant	33(0)9 67 47 36 22	33(0)6 81 97 05 20	www.bazot.fr	contact@bazot.fr
Petit Châtel	B2	***	1	<b>Chalet Morclan N°8</b>	8	92	Mme POWELL Elizabeth		44(0)7835 066 886	www.chatelchalet.com	stay@chatelchalet.com
Petit Châtel	C2	****	1	<b>L'Etagne</b>	12 to 16	167	M. TRINCAZ Alain	33(0)4 50 73 30 60	33(0)4 50 73 25 17	www.chalet-etagne-chatel.com	lekandahar@wanadoo.fr
Vonnes	H2	***	1	<b>V'Nipi</b>	7	90	M. BAUD - RUBIN	33(0)4 50 26 49 95	33(0)6 12 15 36 48		sabine.baud@gmail.com

>Linga area: hamlets of Villapeyron and l'Essert.

Area	Map	Class.	Nb	Name of chalet	Capacity	m <sup>2</sup>	Owner's name	Telephone	Fax or mobile	Internet	E-mail
<b>UNCLASSIFIED STUDIOS</b>											
Béchnigne	F3	NC	1	<b>Les Gentianes</b>	4	20	M. BLUTEAU	33(0)2 51 41 99 85	33(0)6 75 87 21 29		pblut@wanadoo.fr
Béchnigne	F3	NC	1	<b>Le Soli</b>	1 to 4	35	Mme DELAMALMAISON Aurore		33(0)6 09 07 72 14		cases.florent@neuf.fr
Boude	E2	NC	1	<b>Les Tartifles</b>	4	26	Mme JACQUES S	41(0)78 630 91 00		www.studiochatel.fr	sj@gfphoto.ch
Centre	F2	NC	1	<b>Les Jonquilles</b>	2 to 4	42	M. BURNET - BORDET	33(0)4 50 73 20 93	33(0)6 08 52 50 04		bernardbordet@orange.fr
Centre	F3	NC	1	<b>Chalet Gai Soleil</b>	2	16	M. CATALA Michel	33(0)9 84 25 35 36	33(0)6 71 50 05 02		mich.cat4@free.fr
Centre	G2	NC	1	<b>Les Rhododendrons</b>	4	30	M. COGUEN Rémy	33(0)6 98 18 41 17	33(0)6 26 24 24 63		rcoguen@gmail.com
Centre	G2	NC	1	<b>Les Rhododendrons</b>	4	29	M. FEQUET Pierre	33(0)3 21 83 20 14	33(0)6 67 75 64 06		fequet.p@wanadoo.fr
Centre	G2	NC	1	<b>Les Rhododendrons</b>	3	30	M. LEMAITRE	33(0)3 21 36 45 28	33(0)6 20 63 06 02		lemaitre.jean-pierre@neuf.fr
Centre	G2	NC	1	<b>Les Rhododendrons</b>	3	31	M LEROUJER P.		33(0)6 15 19 03 83	chatel-74.e-monsite.com	pierre.leroudier@free.fr
Centre	F2	NC	2	<b>Le Vieux Four</b>	2 to 3	19 to 20	Mme HAUTIN-LACROIX	33(0)4 50 73 30 56	33(0)6 10 60 60 62	www.vieuxfour.net	vieuxfour@gmail.com
Centre	H3	NC	1	<b>Lys Martagon</b>	2 to 3	25	SCI MAXIT Location	33(0)4 50 73 23 82	33(0)4 50 73 23 82	www.maxitlocation.com	maxitlocation@hotmail.fr
Etringa	H3	NC	1	<b>Les Ambrunes</b>	4	33	Mme BRAZIER	33(0)4 50 73 21 49	33(0)4 50 73 39 92		
Etringa	H3	NC	1	<b>Les Tavillons</b>	4	27	M. DUVAL	33(0)4 50 70 83 47	33(0)6 80 88 42 93		armelleduval@hotmail.com
Etringa	H3	NC	1	<b>Chalet le Blanco</b>	4	30	M. PEILLEX DELPH Nicolas	33(0)4 50 73 20 98	33(0)4 50 73 20 98	www.chalet-blanco-chatel.com	contact@chalet-blanco-chatel.com
Etringa	H3	NC	1	<b>Lou Candres</b>	4	28	M. RUBIN Serge	33(0)4 50 73 20 37	33(0)4 50 73 30 82	www.loucandres.com	rubin.serge74@orange.fr
Freinets/Loy	I4	NC	1	<b>Le Fuschia</b>	2 to 5	22	M. POIRET Joël	33(0)1 30 36 17 13	33(0)6 13 54 96 33		mipoiret@gmail.com
Linga	J8	NC	1	<b>Les Avenières A</b>	1 to 4	20	Mme AUBRIT Vanessa		33(0)6 72 39 38 34	studio-chatelohmyloc.com	vanessa.aubrit@gmail.com
Linga	L6	NC	1	<b>Les Portes du Soleil B</b>	2 to 3	30	M. BONNEFONT Roger	33(0)1 46 78 22 15	33(0)6 63 33 24 58		
Linga	M6	NC	1	<b>Les Iris</b>	4	20	M. KOUFRATH Serge		33(0)6 87 81 83 93	www.ma-montagne.fr	contact@ma-montagne.fr
Linga	L6	NC	1	<b>Le Moulin</b>	2 to 5	23	M. LECHINE Emmanuel	33(0)3 81 38 20 11	33(0)6 70 37 05 74		emmanuel.lechine@orange.fr
Linga	K4	NC	1	<b>Les Tyroliens</b>	4	21	M. PAGNIEZ Damien	33(0)3 88 82 72 68	33(0)6 36 51 40 11	lestyroliens.webnode.fr	pagniez.damien@gmail.com
Linga	L6	NC	1	<b>Linga B</b>	4	22	M. PIERRARD Gérald		33(0)6 78 26 25 85		gesev11@yahoo.fr
Linga	L6	NC	1	<b>Le Moulin</b>	4	25	M. SCHOUMACHER Josy	33(0)3 87 04 41 68	33(0)3 87 04 41 68		josy.schoum@wanadoo.fr
Linga	L6	NC	1	<b>Les Portes du Soleil A</b>	5	25	M. UGOLINI	33(0)3 81 46 71 38	33(0)6 77 36 53 02	sites.google.com/site/meublechatel74	jacqugo@free.fr
Linga	L6	NC	1	<b>Les Covillets</b>	4	26	M. VOGELE	33(0)3 81 46 27 82	33(0)6 11 41 65 26	sites.google.com/site/appartementskchatel/piedpistes/home	julie.vogele@neuf.fr
Petit Châtel	C1	NC	1	<b>Zénith Alexandra</b>	5	40	M. BODART	32(0)476 56 51 54			chantalbodart@hotmail.com
Petit Châtel	D2	NC	1	<b>Alpage B</b>	3	20	Mme DUHAMEL	33(0)6 99 52 47 90	33(0)6 48 68 29 93		nathalie.duhamel59@gmail.com
Petit Châtel	B2	NC	1	<b>Yeti 3</b>	4	25	M. ENGEL Jonathan	33(0)6 49 47 01 25	33(0)6 81 29 63 64		stirling@yahoo.fr
Petit Châtel	B3	NC	1	<b>Le Terroit</b>	4 to 5	31	M. HELJON Daniel	33(0)2 37 97 24 77	33(0)6 12 58 19 59		helion.daniel@neuf.fr
Petit Châtel	D2	NC	1	<b>Hameau des 4 Saisons</b>	4	27	M. MARMION Pierre	33(0)2 54 72 03 56	33(0)9 84 45 12 62	www.amivac.com/site4097	m.mamion@libertysurf.fr
Petit Châtel	D2	NC	1	<b>Alpage A</b>	4	20	M. MATHOT Jackie	33(0)2 38 64 14 90	33(0)6 80 66 33 63		jackie.mathot@orange.fr
Roitet	C3	NC	1	<b>Balcon des Alpes</b>	4	27	Mme HAUTEVILLE Olga	33(0)4 50 73 22 72	33(0)4 50 73 23 25	www.echo-des-montagnes.fr	webmaster@echo-des-montagnes.fr
Vonnes	J2	NC	1	<b>Alpenlake</b>	5	30	Mme LUCAS Lydie	33(0)4 50 81 61 29	33(0)6 32 18 76 98		lydie.lucas@aliceadsl.fr
<b>UNCLASSIFIED 2-ROOM APARTMENTS</b>											
Béchnigne	F3	NC	1	<b>La Chaumière des Neiges</b>	6	25	M. CLEMENT Didier		33(0)6 10 35 01 72		didierclement55@gmail.com
Béchnigne	F3	NC	1	<b>La Toison Blanche</b>	6	30	Mme DELIEN	33(0)2 41 32 00 09	33(0)6 67 43 98 10		delien.am@orange.fr
Béchnigne	F2	NC	1	<b>Les Gentianes</b>	4	21	Mme PINGET Sandrine	33(0)4 50 75 01 89	33(0)6 80 24 10 61		appartement74chatel@orange.fr
Centre	G2	NC	1	<b>Beauséjour</b>	6	31	M. CARRASCO	33(0)6 80 25 86 42	33(0)6 68 48 91 99		stephanie.carrasco@bbox.fr
Centre	F3	NC	1	<b>Chalet Gai Soleil</b>	2 to 4	43	M. CATALA Michel	33(0)9 84 25 35 36	33(0)6 71 50 05 02		mich.cat4@free.fr
Centre	F2	NC	1	<b>Le Vieux Four</b>	4 to 5	30	Mme HAUTIN-LACROIX	33(0)4 50 73 30 56	33(0)6 10 60 60 62	www.vieuxfour.net	vieuxfour@gmail.com
Centre	F2	NC	1	<b>Le Viking</b>	5	45	Mme LAMPIN Danièle	33(0)6 08 98 78 02	33(0)3 21 67 04 56	appart.lampin.chatel.free.fr	danielelampin2@gmail.com
Centre	G3	NC	1	<b>Les Rochassons</b>	4 to 5	38	Mme LEPEE Agnès	33(0)4 66 37 38 91	33(0)6 21 78 94 51		agnes.maxit@orange.fr
Centre	G2	NC	1	<b>Caribou</b>	5	40	M LEROUJER P.		33(0)6 15 19 03 83	chatel-74.e-monsite.com	pierre.leroudier@free.fr
Centre	G3	NC	1	<b>Castel des Neiges</b>	6	40	M. MAGNIER	33(0)2 35 93 98 54	33(0)6 07 72 77 59		didier-magnier@orange.fr
Centre	G3	NC	1	<b>Les Rochassons</b>	4	35	M. MAXIT Edmond	33(0)4 50 73 23 40			
Centre	H3	NC	1	<b>Lys Martagon</b>	5 to 8	50	SCI MAXIT Location	33(0)4 50 73 23 82	33(0)4 50 73 23 82	www.maxitlocation.com	maxitlocation@hotmail.fr
Centre	H2	NC	1	<b>Le Cèpe</b>	5	30	Mme RUBIN-GUERS Marie Christine	33(0)4 50 77 56 72	33(0)6 71 59 73 42	www.guersrubin.wix.com/location-chatel	guersrubin@wanadoo.fr
Centre	H3	NC	1	<b>Les Ambrunes</b>	4	30	M. COGUEN Rémy	33(0)6 98 18 41 17	33(0)6 26 24 24 63		rcoguen@gmail.com
Etringa	H3	NC	1	<b>Lou Candres</b>	6	40	M. RUBIN Serge	33(0)4 50 73 20 37	33(0)4 50 73 30 82	www.loucandres.com	rubin.serge74@orange.fr
Freinets/Loy	J4	NC	1	<b>Perce-Neige B</b>	4 to 5	26	M. LE ROLLAND	33(0)2 96 49 03 61	33(0)6 88 49 53 95		kozbars74@orange.fr
Freinets/Loy	K5	NC	1	<b>Les Marmottes</b>	4 to 6	36,2	M. VITAUZ	33(0)4 50 81 03 85	33(0)7 60 92 01 09		stephvitauz@yahoo.fr
Grandes Mouilles	C3	NC	2	<b>L'igloo</b>	6	50	M. PAGE Christian	33(0)4 50 73 21 49	33(0)4 50 73 39 92	www.chalet-igloo.com	pageargol@aol.com
Grandes Mouilles	B3	NC	1	<b>La Covagne</b>	4 to 5	38	M. PIERI Yves	33(0)4 50 73 23 38	33(0)4 50 73 24 38		
Linga	M6	NC	2	<b>Le Clos du Linga</b>	4 to 6/8 37,75 to 43	43	M. BAUMGART	33(0)3 89 82 82 19	33(0)6 17 24 06 56	www.location-appartements-chatel.com	baumgartchatel@orange.fr
Linga	J8	NC	1	<b>Les Avenières B</b>	2 to 6	30	M. BECQUET Laurent		32(0)478 05 99 66		erika.honnay@gmail.com
Linga	L6	NC	1	<b>Les Portes du Soleil B</b>	4	34	M. CASPAR Hugues	33(0)3 88 87 40 04	33(0)6 22 25 66 79		dr.hugues.caspar@free.fr
Linga	M6	NC	1	<b>Les Campanules</b>	4 to 6	31	M. CHEVALLIER	33(0)3 86 64 93 94	33(0)6 30 29 60 07	www.papvacances.fr/annonce/location-appartement-chalet-201700776	les-campanules-32@orange.fr
Linga	M6	NC	2	<b>L'Evasion</b>	6	50	M. CREPY Bernard	33(0)4 50 73 16 13	33(0)6 89 36 56 75	www.vacancesachatel.com	sonia.crepy@orange.fr
Linga	L6	NC	1	<b>Les Portes du Soleil</b>	6	34	Mme HEIMBURGER-WITERS Myriam	33(0)4 93 59 81 17	33(0)4 93 59 81 17	chatel.linga.free.fr	myheimburger-witers@laposte.net



Area	Map	Class.	Nb	Name of chalet	Capacity	m <sup>2</sup>	Owner's name	Telephone	Fax or mobile	Internet	E-mail
Linga	M6	NC	1	<b>Les Campanules</b>	6	25	M. KOLIFRATH Patrick	33(0)3 69 77 19 21	33(0)6 24 99 23 20	www.entr-monts.com	christelle@entr-monts.com
Linga	L6	NC	1	<b>Le Moulin B</b>	2 to 7	43	SCI CHALIN3968	33(0)3 89 83 00 98			scichalin3968@gmail.com
Linga	L6	NC	1	<b>Les Perthuis</b>	6	28	M. VAUTHEY Jean-Marc	33(0)3 81 58 04 92	33(0)6 16 31 74 89	www.laujm.jimdo.com	laurence.vauthey@orange.fr
Petit Châtel	B2	NC	1	<b>Yeti 3</b>	5	35	M. BROSSAULT Bernard	33(0)6 86 86 72 95	33(0)6 86 53 31 26		bernard.brossault@orange.fr
Petit Châtel	B2	NC	1	<b>Yeti 1</b>	5 to 6	50	Mme ETAIX - GARAMBOIS A.	33(0)4 78 39 52 58	33(0)6 16 37 19 28		annie.garambois@gmail.com
Petit Châtel	D2	NC	1	<b>Alpage A</b>	4 to 5	30	M. GAULTIER René Michel	33(0)2 41 39 70 24	33(0)6 88 06 57 19	www.locationachatel74.fr	info@locationachatel74.fr
Petit Châtel	D2	NC	1	<b>Hameau des 4 Saisons B</b>	4	34	M. LABBE	33(0)2 38 98 47 36	33(0)6 14 38 51 00		claudelabbe@wanadoo.fr
Petit Châtel	B2	NC	1	<b>Tovassière B</b>	6	40	Mme NORRIS Vikki	44(0)273 46 58 67	44(0)7973 68 99 11		vikkinorris@ymail.com
Petit Châtel	B2	NC	1	<b>La Tovassière</b>	4 to 5	40	Mme SOMERS Pascale	32(0)81 51 15 84	32(0)477 22 53 94	tovassiere.jimdo.com	pascalesomers@hotmail.com
Petit Châtel	D2	NC	1	<b>Hameau des 4 Saisons</b>	6	37	Mme TERROITIN Martine	33(0)2 43 03 61 17	33(0)6 20 89 29 53	www.amivac.com/site22311	martineteroitin@hotmail.fr
Roitot	C3	NC	2	<b>Balcon des Alpes</b>	6	36	Mme HAUTEVILLE Olga	33(0)4 50 73 22 72	33(0)4 50 73 23 25	www.echo-des-montagnes.fr	webmaster@echo-des-montagnes.fr
Roitot	B3	NC	1	<b>Chalet Lou P'Nots</b>	5	37	M.&Mme THALINGER Didier et Luminita		33(0)6 11 78 49 81		chaletloupnots@orange.fr
Vonnes	J2	NC	1	<b>Le Bellevue</b>	2 to 6	50	M. BORDERIEUX Stéphane		33(0)6 86 71 45 95	www.homedays.com/hebergement/pl512709	fam.borderieux@orange.fr
Vonnes	J2	NC	1	<b>Les Fermes B</b>	5	25	M. GUEMARD Thomas et Marylise	33(0)4 50 04 78 06	41 (0)76 693 22 58	www.facebook.com/location.appart.chalet74/	maryguem@hotmail.com
Vonnes	I3	NC	1	<b>Véronica</b>	6	36	M. SPARKS	44(0)934 82 48 77	44(0) 771 451 71 47		barry_sparks@hotmail.com
Vonnes	I2	NC	1	<b>Le Joran</b>	4	30,5	Mme TURPIN	33(0)1 48 66 11 19			thierry.corfias@club-internet.fr

### UNCLASSIFIED 3-ROOM APARTMENTS

Centre	H3	NC	1	<b>Les Snailles</b>	6	72	M. CREPY BANFIN Denis	33(0)4 50 73 24 99	33(0)6 84 22 43 41		lagalet@sf.fr
Centre	G3	NC	1	<b>La Lavandière</b>	6 to 8	68	Mme FABRE Patricia	33(0)6 87 31 18 19	33(0)4 50 73 30 49	www.lalavandiere.fr	fabre.patricia74@gmail.com
Centre	F2	NC	4	<b>Le Vieux Four</b>	6 to 7	69 to 76	Mme HAUTIN-LACROIX	33(0)4 50 73 30 56	33(0)6 10 60 60 62	www.vieuxfour.net	vieuxfour@gmail.com
Centre	G3	NC	2	<b>Les Rochassons</b>	6 to 7	50	M. MAXIT Edmond	33(0)4 50 73 23 40			
Centre	H3	NC	1	<b>Lys Martagon</b>	6	50	SCI MAXIT Location	33(0)4 50 73 23 82	33(0)4 50 73 23 82	www.maxitlocation.com	maxitlocation@hotmail.fr
Centre	H3	NC	1	<b>Le Jessi</b>	6	60	Mme ROPER Veronica	44(0)254 852 027	44(0)7901 913 812	www.holidays.moonfruit.com	vproper1@gmail.com
Centre	H2	NC	1	<b>Le Cèpe</b>	6	70	Mme RUBIN-GUERS Marie Christine	33(0)4 50 73 56 72	33(0)6 71 59 73 42	www.guersrubin.wix.com/location-chalet	guersrubin@wanadoo.fr
Centre	F2	NC	2	<b>La Vache qui Rit</b>	6	42 & 45	Mme VUARAND Valérie	33(0)4 50 73 22 82	33(0)4 50 81 31 43	www.appart-chalet.com	info@appart-chalet.com
Centre	G3	NC	1	<b>Richard Sports</b>	6	9	Mme ZIANI Patricia	33(0)4 50 26 68 94	33(0)6 77 29 03 04	www.locationappart-chalet.com	patricia.ziani@wanadoo.fr
Etringa	I3	NC	2	<b>Epicéa</b>	6	65	M. CRUZ Daniel	33(0)4 50 73 30 67	33(0)4 50 73 21 50	www.chalet-epicea.com	cruzda@wanadoo.fr
Etringa	H3	NC	1	<b>Chalet le Blanche</b>	6 to 7	75	M. PEILLEX DELPH Nicolas	33(0)4 50 73 20 98	33(0)4 50 73 20 98	www.chalet-blanche-chalet.com	contact@chalet-blanche-chalet.com
Etringa	H3	NC	1	<b>Lou Candres</b>	7	55	M. RUBIN Serge	33(0)4 50 73 20 37	33(0)4 50 73 30 82	www.loucandres.com	rubin.serge74@orange.fr
Freinets/Loy	J4	NC	1	<b>Perce-Neige B</b>	6	40	M BELCHE Jacques	32(0)10 22 26 31	32(0)4 75 89 80 87	www.paten.be/nadine	nadine.belche@gmail.com
La Cale	B4	NC	2	<b>Beau Regard</b>	6 to 7	82	M. PREMAT Pierre	33(0)4 50 73 24 87	33(0)4 50 73 27 52	www.chalet-location.com	info@chalet-location.com
Linga	M6	NC	2	<b>Le Clos du Linga</b>	6 & 8 to 10	38,90 & 50	M. BAUMGART	33(0)3 89 82 82 19	33(0)6 17 24 06 56	www.location-appartements-chalet.com/baumgartchalet@orange.fr	info@appart-chalet.com
Linga	L6	NC	1	<b>Les Sabots de Venus</b>	6 à 8	60	SCI CHATEL - STEINER Philippe	33(0)3 89 40 63 08	33(0)6 07 38 11 35	www.appartement-chalet.com	philippesteiner54@gmail.com
Linga	M6	NC	2	<b>L'Evasion</b>	8	60	M. CREPY Bernard	33(0)4 50 73 16 13	33(0)6 89 36 56 75	www.vacancesachatel.com	sonia.crepy@orange.fr
Linga	M6	NC	4	<b>L'Etrye</b>	6	60	M. GRILLET-AUBERT Stéphane	33(0)4 50 81 38 02	33(0)6 82 93 46 01	www.lechardonneret.com	stephan.grillet-aubert@orange.fr
Linga	K4	NC	1	<b>Tyroliens B</b>	6	45	M. KERKHOF - LISSENS	32(0) 477 800 843		www.manang.be/chalet	frederik.kerkhofs@manang.be
Linga	M6	NC	1	<b>Les Iris</b>	5	35	M. QUIQUEREZ Raymond	33(0)3 89 82 55 04	33(0)6 22 23 30 60	www.louer-chalet.fr	raymequiqu@sf.fr
Petit Châtel	A2	NC	1	<b>Au Bon Accueil</b>	4	70	M. CREPY-MARGLAIS Aimé	33(0)4 50 81 30 48	33(0)6 80 17 82 67		aime.crepy-marglais@orange.fr
Petit Châtel	B2	NC	1	<b>Yéti 4</b>	6	50	M. GINGLINGER	33(0)3 89 23 41 51	33(0)6 75 17 56 02	laurent.ginglinger.free.fr/chalet	marthe.ginglinger@gmail.com
Petit Châtel	D2	NC	1	<b>Hameau des 4 Saisons</b>	6 to 8	50	M. MARMION Pierre	33(0)2 54 72 03 56	33(0)9 84 45 12 62	www.amivac.com/site3863	m.marmion@libertysurf.fr
Petit Châtel	B3	NC	1	<b>Alpage C</b>	1 to 6	42,47	M. ROBERTS Nicholas & Sarah	44(0)1981 240 565			ciderbarnsarrah@hotmail.co.uk
Petit Châtel	C3	NC	1	<b>Chalet Tirelire</b>	6	88	M. VAN DER VELDEN	31(0)6 42 74 49 49		www.chalet-tirelire.com	kara@chalet-tirelire.com
Roitot	C3	NC	1	<b>Balcon des Alpes</b>	6	55	Mme HAUTEVILLE Olga	33(0)4 50 73 22 72	33(0)4 50 73 23 25	www.echo-des-montagnes.fr	webmaster@echo-des-montagnes.fr
Roitot	B3	NC	1	<b>Chalet Lou P'Nots</b>	6	58	M.&Mme THALINGER Didier et Luminita		33(0)6 11 78 49 81		chaletloupnots@orange.fr
Vonnes	I2	NC	1	<b>Résidence de Vonnes</b>	6	70	Mme DESPICHT	33(0)3 21 51 54 05	33(0)6 01 98 88 18		despicht-BG@neuf.fr

### UNCLASSIFIED 4-ROOM APARTMENTS

Centre	H3	NC	1	<b>Lys Martagon</b>	11	75	SCI MAXIT Location	33(0)4 50 73 23 82	33(0)4 50 73 23 82	www.maxitlocation.com	maxitlocation@hotmail.fr
Centre	G3	NC	1	<b>Richard Sports</b>	7 to 11	65	Mme ZIANI Patricia	33(0)4 50 26 68 94	33(0)6 77 29 03 04	www.locationappart-chalet.com	patricia.ziani@wanadoo.fr
Etringa	I3	NC	2	<b>Epicéa</b>	7 & 9	65 & 90	M. CRUZ Daniel	33(0)4 50 73 30 67	33(0)4 50 73 21 50	www.chalet-epicea.com	cruzda@wanadoo.fr
Freinets/Loy	G3	NC	1	<b>Deffavia</b>	8	80	Mme MUFFAT Jacqueline	33(0)4 50 72 10 25			sandrinemuffat@live.fr
Grandes Mouilles	C3	NC	1	<b>L'Igloo</b>	9	72	M. PAGE Christian	33(0)4 50 73 21 49	33(0)4 50 73 39 92	www.chalet-igloo.com	pageargol@aol.com
Grandes Mouilles	B3	NC	1	<b>La Covagne</b>	8	64	M. PIERI Yves	33(0)4 50 73 23 38	33(0)4 50 73 24 38		
Linga	K4	NC	1	<b>Les Cristaux des Neiges</b>	8 to 10	115	Mme CREPY Sonia	33(0)4 50 73 16 13	33(0)6 89 36 56 75	www.vacancesachatel.com	sonia.crepy@orange.fr
Linga	K5	NC	1	<b>Le Christina</b>	7	54	M. NOEL Guy		33(0)6 07 08 05 71		dgn92-location@yahoo.fr
Petit Châtel	C3	NC	2	<b>Chalet Tirelire</b>	9	78	M. VAN DER VELDEN	31(0)6 42 74 49 49		www.chalet-tirelire.com	kara@chalet-tirelire.com
Petit Châtel	C/D2	NC	1	<b>Soleil d'Hiver</b>	6	50	M. VASSEUR		33(0)6 83 01 85 36		
Roitot	C3	NC	1	<b>Balcon des Alpes</b>	8	60	Mme HAUTEVILLE Olga	33(0)4 50 73 22 72	33(0)4 50 73 23 25	www.echo-des-montagnes.fr	webmaster@echo-des-montagnes.fr
Roitot	C3	NC	1	<b>Chalet La Voraz</b>	2 to 8	60	SCI La Voraz	33(0)4 50 26 37 62	33(0)6 82 99 05 49	www.chalet-la-voraz.fr	sci.lavoraz@orange.fr
Vonnes	H2	NC	1	<b>Les Névés</b>	4 to 6	70	M. BAUD - RUBIN	33(0)4 50 26 49 95	33(0)6 12 15 36 48		sabine.baud@gmail.com

>Linga area: hamlets of Villapeyron and l'Essert.

Area	Map	Class.	Nb	Name of chalet	Capacity	m <sup>2</sup>	Owner's name	Telephone	Fax or mobile	Internet	E-mail
<b>UNCLASSIFIED 5-ROOM APARTMENTS</b>											
Boude	E2	NC	1	<b>La Puce</b>	2 to 7	84	Mme OCHS Véronique	33(0)4 50 73 31 31	33(0)6 82 08 09 48	www.location-ochs.com	veronique@location-ochs.com
Centre	H3	NC	1	<b>Lys Martagon</b>	10 to 12	110	SCI MAXIT Location	33(0)4 50 73 23 82	33(0)4 50 73 23 82	www.maxitlocation.com	maxitlocation@hotmail.fr
Etringa	I3	NC	1	<b>Les Balcons de Châtel</b>	6	92	M. LE CORSU Jean	33(0)6 78 79 03 81			annick.lecorsu@free.fr
Linga	K5	NC	2	<b>La Cabane</b>	10	100 to 170	M. CREPY Annie et Lionel	33(0)4 50 73 22 77	33(0)4 50 73 22 77	www.chatel-chalet.com	cascade74@wanadoo.fr
Linga	M6	NC	1	<b>L'Evasion</b>	15	110	M. CREPY Bernard	33(0)4 50 73 16 13	33(0)6 89 36 56 75	www.wacancesachatel.com	sonia.crepy@orange.fr
Linga	J8	NC	1	<b>Le Petit Carline</b>	4 to 10	130	M.&Mme CRUZ-MERMY Michel	33(0)4 50 73 33 03	33(0)6 03 18 56 00		michelcruzmermy@orange.fr
Linga	M6	NC	1	<b>L'Etrye</b>	10	100	M. GRILLET-AUBERT Stéphane	33(0)4 50 81 38 02	33(0)6 82 93 46 01	www.lechardonneret.com	stephan.grillet-aubert@orange.fr
Linga	K6	NC	1	<b>La Tocade - Edelweiss</b>	8 to 10	130	M. HAUPTMANN	33(0)3 88 95 08 56	33(0)6 73 67 90 10	edelweisslatocade.wifeo.com	schneider.fabrice@neuf.fr
<b>UNCLASSIFIED 6-ROOM APARTMENTS</b>											
Centre	G3	NC	1	<b>Richard Sports</b>	11 to 15	125	Mme ZIANI Patricia	33(0)4 50 26 68 94	33(0)7 72 29 03 04	www.locationappart-chalet.com	patricia.ziani@wanadoo.fr
La Cale	B4	NC	1	<b>Beau Regard</b>	12	160	M. PREMAT Pierre	33(0)4 50 73 24 87	33(0)4 50 73 27 52	www.chatel-location.com	info@chalet-location.com
Linga	M6	NC	1	<b>Le P'tit Cornillon</b>	10	90	M. CREPY MARGLAIS Florent	33(0)4 50 81 35 49	33(0)6 78 53 07 74	www.lepetitcornillon.fr	bienvenue@lepetitcornillon.fr
Roïtet	C3	NC	1	<b>Chalet La Voraz</b>	4 to 12	170	SCI La Voraz	33(0)4 50 26 37 62	33(0)6 82 99 05 49	www.chalet-la-voraz.fr	scilavoraz@orange.fr
<b>UNCLASSIFIED 7-ROOM APARTMENTS</b>											
Linga	M6	NC	2	<b>Le P'tit Cornillon</b>	10 to 20	90 & 380	M. CREPY MARGLAIS Florent	33(0)4 50 81 35 49	33(0)6 78 53 07 74	www.lepetitcornillon.fr	bienvenue@lepetitcornillon.fr
Linga/Jardy	F5	NC	1	<b>Bonhomme de neige</b>	15	130	M. LEFRANCOIS Yohan	33(0)4 50 73 24 53	33(0)4 50 73 38 74	www.locations-chalet.com	le-schuss@wanadoo.fr
<b>UNCLASSIFIED INDEPENDENT CHALETs</b>											
Béchnigne	E3	NC	1	<b>Chante Bise</b>	12	150	Mme BRAZIER Catherine	33(0)9 62 13 82 86	33(0)6 81 93 14 95	www.chaletchantebise.com	catherine.brazier2@orange.fr
Béchnigne	F4	NC	1	<b>Chante Merle</b>	12	225	Mme BRAZIER Catherine		33(0)6 81 93 14 95	www.chaletchantebise.com	catherine.brazier2@orange.fr
Boude	F2	NC	1	<b>Le Mazot</b>	8	165	Mme GRIFFITHS Henrietta				henriettagriffiths@btinternet.com
Boude	F2	NC	1	<b>Chalet Page</b>	10	325	M. PAGE	44(0)2086 73 40 97	44(0)7770 63 73 04	www.luxurychaletchalet.com	nhpaga@googlemail.com
Centre	H3	NC	1	<b>Chalet Alaska</b>	9	140	M. HIGGINBOTTOM	33(0)4 50 81 31 48	33(0)6 87 56 82 52		perine.chambaud@wanadoo.fr
Centre	E3	NC	1	<b>Le Foehn</b>	4 to 5	60	Mme POLLOCK Clare	44(0)1992 81 30 62	44(0)7939 00 42 05	www.chalet-lefoehn.com	skiclare@aol.com
Centre	H2	NC	1	<b>Chalet Alfred</b>	5	40	Mme RUBIN-GUERS Marie Christine	33(0)4 50 77 56 72	33(0)6 71 59 73 42	www.guersrubin.wix.com/location-chalet	guersrubin@wanadoo.fr
Etringa	I3	NC	1	<b>Chalet Imelda</b>	8	105	M. CRUZ Daniel	33(0)4 50 73 30 67	33(0)4 50 73 21 50	www.chalet-imelda.com	cruzda@wanadoo.fr
Freinets/Loy	H3	NC	1	<b>Les Erines</b>	9	150	M. HEATHFIELD Robert	33(0)4 50 81 35 43	33(0)6 76 83 48 08	www.alpineheart.com	info@alpineheart.com
Freinets/Loy	I4	NC	1	<b>Chalet du Caire</b>	8	105	Mme MACDONALD Patricia	44(0)1786 833 876	44(0)7892 404 805		patmacdonald75@yahoo.com
Freinets/Loy	I4	NC	1	<b>Le Chasse Neige</b>	12 to 18	200	Mme RAIDOT Laëtitia		33(0)6 64 39 02 40	www.chalet-chalet-lechasseneige.com	laetitia.raidot@hotmail.fr
Jardy	B5	NC	1	<b>Wakinou</b>	6	150	M. MARCHAND Christian	33(0)4 50 73 25 81	33(0)6 74 55 87 27	www.chalet-wakinou.com	christian.marchand74@orange.fr
Jardy	A5	NC	1	<b>Le Châtel'Ain</b>	8	110	M.&Mme VAN GINKEL Hans	33(0)4 74 39 86 48	33(0)6 89 89 67 95	www.chalet-chateau.com	fea@briseline.com
Linga	L6	NC	1	<b>Chalet Laurette</b>	8	150	M BASSI Patrick	33(0)3 81 92 94 41	33(0)6 07 57 44 84	chalet-laurette.e-monsite.com	brvicky25@gmail.com
Linga	M6	NC	1	<b>Caplou</b>	15	120	Mme BAUMGART-DESSERTINE Catherine	33(0)3 89 75 86 32	33(0)6 14 67 66 06	www.location-appartement-chalet.fr	jp.dessertine@wanadoo.fr
Linga	M6	NC	1	<b>Dans L'Pentu</b>	20	220	Mme BAUMGART-DESSERTINE Catherine	33(0)3 89 75 86 32	33(0)6 14 67 66 06	www.location-appartement-chalet.fr	jp.dessertine@wanadoo.fr
Linga	M6	NC	1	<b>Tho'max</b>	10	100	Mme BAUMGART-GASSER Isabelle	33(0)3 89 82 84 88	33(0)6 82 39 54 76	www.location-chalet-chalet.fr	luc.gasser@wanadoo.fr
Linga	K4	NC	1	<b>Le Soly</b>	8 to 10	100	M. CHAMPEAU	33(0)4 50 71 84 63			michel-champeau@club-internet.fr
Linga	M6	NC	1	<b>Chalet Heidi</b>	4 to 19	230	Mlle CREPY BANFIN Emilie			location-chalet-montagne.com/chalet-d-emilie-chalet-linga	location74@hotmail.fr
Linga	I9	NC	1	<b>Chalet Grand Cœur</b>	10	250	SARL DEWHURST	33(0)4 50 73 91 16	44(0)796 796 37 46	www.alpinebliss.co.uk	info@alpinebliss.co.uk
Linga	I8	NC	1	<b>Darbelo</b>	10	100	M. DUVAUT Gérard	33(0)4 50 70 52 36			gduvaut@gmail.com
Linga	I8	NC	1	<b>Au Bon Vieux Temps</b>	8	115	M. GRILLET-AUBERT Charles	33(0)4 50 73 24 37	33(0)4 50 73 24 37	www.charles-sports.com	charlesport@wanadoo.fr
Linga	K5	NC	1	<b>La Pénévélée de Neige</b>	20	230	M. GRILLET-MUNIER Camille	33(0)4 50 73 24 53	33(0)4 50 73 38 74	www.locationappartement-chalet.fr	le-schuss@wanadoo.fr
Linga	K8	NC	1	<b>Chalet Chocolat</b>	8 to 10	100	M. HOBSON PETER	44(0)7548 567 359	44(0)7548 567 359	www.skichaletchocolat.com	info@skichaletchocolat.com
Linga	K6	NC	1	<b>Le Ramoneur Savoyard</b>	9 to 12	128	Mme HULNE Maryse		33(0)6 84 68 03 98	www.chalet-ramoneur-savoyard.fr	info@chalet-ramoneur-savoyard.fr
Linga / Dranse	J5	NC	1	<b>Chalet Isobel</b>	8	180	M. LE PELLEY			www.chaletisobel.com	info@chaletisobel.com
Linga	M7	NC	1	<b>Chalet Rose</b>	10 to 16	210	Mme ROOS HERREMANS Ariane		31(0)6 22 996 131	www.chaletchalet.nl	chaletchalet@telfort.nl
Linga	K4	NC	1	<b>Chalet Gallois</b>	10	200	M. THOMAS Martin	44(0)1600 750 898		www.chaletgallois.wordpress.com	thomas.team@outlook.com
Petit Châtel	B2	NC	1	<b>Maison Blanche et Verte</b>	12	600	M. BUSSANDRI Franco	44(0)203 074 1130	44(0)7917 66 0440	www.maisonblancheetverte.com	mail@maisonblancheetverte.com
Petit Châtel	C2	NC	1	<b>Chalet les Loups</b>	4 to 27	330	Mme DUPUIS		33(0)6 76 60 20 31	www.chalet-les-loups.fr	armelle.dupuis@orange.fr
Petit Châtel	A2	NC	2	<b>Nid Zut / Chalet Alban</b>	8 & 15	80 & 170	M. GRILLET-MUNIER Alban	33(0)4 50 81 04 21	33(0)6 72 07 65 10	www.location-chalet-chalet.com	chaletachatel@orange.fr
Petit Châtel	A2	NC	1	<b>Chalet Les P'Tits Trappeurs</b>	23	250	Mme GRILLET-MUNIER Armande		33(0)6 34 14 27 79	www.locationchaletchalet.fr	flavedu74@hotmail.fr
Petit Châtel	B2	NC	1	<b>Chalet du Morcian</b>	6	80	M. LONDOT Claude	32(0)71 87 74 02	32(0)475 49 49 64	www.abritel.fr/614045	londot@infonie.be
Petit Châtel	D1	NC	1	<b>Chaletneuf du Tenne</b>	4 to 12	300	M. MACKEY John	33(0)4 50 81 30 62	33(0)7 85 16 55 43	www.nine-tenne.com	jo@nine-tenne.com
Roïtet	A3	NC	1	<b>La Rissole</b>	9	120	Mme CORNUAU Patricia		33(0)6 11 96 10 82		patricia.cornuau@gmail.com
Roïtet	B3	NC	1	<b>Chantecler</b>	10	118	M. DON Richard	44(0)1732 75 05 10	44(0)7771 88 56 21	www.chaletchantecler.co.uk	richard.doni@btinternet.com
Roïtet	B3	NC	1	<b>La Grange au Merle</b>	15	270	M. GALLOWAY			www.clarianchalets.com	info@clarianchalets.com
Roïtet	A4	NC	1	<b>La Couquille</b>	12 to 14	290	M. SORANZO Jean-Claude	33(0)4 50 73 31 89	33(0)6 86 87 07 94	www.chalet-couquille.com	jean-claude.soranzo@orange.fr
Vonnes	K2	NC	1	<b>Les Etoiles de Vonnes</b>	6 to 24	300	Mme BAUMGART-GASSER Isabelle	33(0)3 89 82 84 88	33(0)6 82 39 54 76	www.location-chalet-chalet.fr	luc.gasser@wanadoo.fr
Vonnes	J2	NC	1	<b>Chalet Les Alpes</b>	12 to 20	385	Mme RUBIN Carole	33(0)6 15 76 79 29		chaletlesalpes.ski	lesalpeschalet@gmail.com
Vonnes	H3/I2	NC	2	<b>Authentique / Simplet</b>	12	130 & 160	M. STEEL	44(0)1652 649 585	44(0)781 382 66 59	www.airbnb.co.uk/rooms/14679368	juliesteel6@btinternet.com
Vonnes	K2	NC	1	<b>L'Orée du Lac</b>	24	380	M. VJARAND Patrice		33(0)6 76 38 17 07	www.chalet-chalet74.com	info@chalet-chalet74.com



# Relaxing in Châtel

Recharge your batteries  
and soak up all the benefits  
of a mountain holiday  
in Châtel.



## WELLBEING, RELAXATION AND HEALTH & FITNESS

### La Fée Bien-être

**Balneotherapy centre** .....J2  
Take time out to relax and unwind at our spa centre, with body treatments, hot-stone massage and associated spa-jet treatments. Discover our recreational hydro treatments centre and relax with our 7-person hot tub, sauna, steam bath, massage seat and Medyjet® water massage system for up to 3 hours, all for just €20.

**INFORMATION:**

› Tel. 33 (0)4 50 73 25 80

[www.spa-chatel.com](http://www.spa-chatel.com)

### Massage treatments

**Thoule Hubschwerlin** .....J4  
Wellbeing massages in a physiotherapy practice, duration varies from 30 min. to 1 hr. Californian massages, relaxing massages of the back and/or lower limbs, sports massages and circulation-boosting massages for the lower limbs. Also a baby massage workshop.

**INFORMATION:**

› Tel. 33 (0)4 50 81 77 71

### Hôtel Macchi

**Spa Authentique Voyage** .....H3  
A fantastic idea for a successful holiday! Come and enjoy our Indian-style spa at any time of day. A concept that is totally new to the mountains, with Ayurvedic treatments tailored and personalised to each client, with professionals brought specially from India. Sessions of 30 to 120 minutes.

› Spa ..... from €71 to €145  
› Introductory package ..... -10%  
(minimum 5 treatments)

**INFORMATION:**

› Tel. 33 (0)4 50 73 24 12

[www.hotelmacchi.com](http://www.hotelmacchi.com)

### Ô des Cimes

**Moutain Spa** .....F4  
Open to everyone. Because holidays are a time to spoil yourself, try our scrubs, wraps, facials, relaxing and sports treatments and more... Featuring the expertise of the Codage brand, incorporating the know-how of France's pharmaceutical tradition.

**INFORMATION:**

› Tel. 33 (0)4 50 17 38 68

[angele@cgh-residences.com](mailto:angele@cgh-residences.com)

[www.cgh-residences.com](http://www.cgh-residences.com)

### Spa Océane

**Water park** .....F4  
Espace Océane: pool heated to 32°C with jets, spa, waterfall, 3 saunas, 2 steam baths. Cardio workout room. Treatments in individual and twin cubicles: relaxing treatments, scrubs, slimming treatments, facials.

**INFORMATION:**

› Tel. 33 (0)4 50 72 04 31

[www.chatel-formedo.com](http://www.chatel-formedo.com)

### Freestyle dance and sophrology classes

Mondays from 7.30 to 8.30pm in the Salle de la Musardière.

**INFORMATION:**

› Association Abon'dances

Tel. 33 (0)6 87 10 38 32

[danselibrechatel@gmail.com](mailto:danselibrechatel@gmail.com)

### Châtel Tonic Club

#### Fitness and massages

Gym, individual and group coaching classes and stretching with Patrick. Then recover and ease away the tension with a sports or Californian massage by Jessica.

**INFORMATION:**

› Tel. 33 (0)6 15 42 48 72 (Patrick) | 33 (0)6 11 84 79 14 (Jessica)

Facebook: Châtel Tonic Club



## WATER PARK *Forme d'O*

**Water park:** one 25 m recreation/sports pool at 29°C, one outdoor pool at 32°C.

**Espace Océane:** well-being pool at 32°C with waterfalls and bubble-bed seats. Two steam baths and three saunas, plus relaxation room. Treatments in individual and twin cubicles: relaxing treatments, scrubs, slimming treatments, facials.

Activities all year round: aquabiking, aquagym, swimming lessons, special events. Make the most of the SkiéO package, which offers a special price for your ski pass and admission to the centre.



*Water park Forme d'O*

Tel. 33 (0)4 50 72 04 31

[infos@chatel-formedo.com](mailto:infos@chatel-formedo.com)

[www.chatel-formedo.com](http://www.chatel-formedo.com)

# Outdoor activities

Looking to escape or for that adrenaline buzz? Do you enjoy sightseeing or just taking it easy? Whether you like to get out and about or just admire the view, Châtel is bound to delight, satisfying your deepest desires! Why not try some new and unforgettable experiences?



## SNOWSHOEING

Explore new trails and have a go at being a trapper.

Over 80 km of trails providing you with a different insight into the mountains under their blanket of snow, at your own pace, on your own or with a guide. Walk, observe and breathe the air. Dazzling! A detailed route description is on sale at Châtel Tourisme.

## ACCOMPANIED snowshoeing trips

Information and bookings:

› **École du Ski Français**

Tel. 33 (0)4 50 73 22 64

[www.esf-chatel.com](http://www.esf-chatel.com)

› **École de Ski Châtel Sensations**

Tel. 33 (0)4 50 81 32 51

33 (0)6 07 73 57 28

[www.chatelsensations.com](http://www.chatelsensations.com)

› **Intersport**

Tel. 33 (0)4 50 73 20 56

[www.intersport-chatel.com](http://www.intersport-chatel.com)

› **École de Ski Pro Skiing**

Tel. 33 (0)4 50 73 31 92

[www.esichatel.com](http://www.esichatel.com)

› **Twiner - Marc Mesiere**

Tel. 33 (0)4 50 73 30 80

[www.twiner-chatel-centre.fr](http://www.twiner-chatel-centre.fr)

› **Tanya Perret**

Tel. 33 (0)6 73 77 05 16

[www.livebreathehike.co.uk](http://www.livebreathehike.co.uk)

## PARAGLIDING

Have-a-go flight with a nationally qualified instructor.

› From ..... €70

To enjoy a better panorama take off from the Morclan.

› Stunt flying option for thrill-seekers ..... +€20

With all flights you can buy an optional CD of photos and video sequences from € 20, for sharing your amazing experience with others.

› **ESI Pro Flying**

Tel. 33 (0)4 50 73 31 92

33 (0)6 01 33 53 60

[www.esichatel.com](http://www.esichatel.com)

## RAMBLE

### L'Éterlou

This is a fun educational trail on the subject of the environment and the animal and plant life in our mountains. Follow this looped trail, situated in Pré-la-Joux next to the sledging runs, and a dozen panels will guide you around, helping all the family to answer a variety of questions.



**OXFAM**  
**WINTERTRAIL**  
60KM | EQUIPES DE 4 | 30H

COMMUNAUTÉ DE COMMUNES  
**PAYS D'ÉVIAN**  
VALLÉE D'ABONDANCE

**On 10 and 11 March 2018, in Châtel and the Abondance Valley, experience an event you'll find nowhere else in the world: a charity walk on snowshoes!**

This event, organised in partnership with the Abondance Valley Community of Communes, is to raise funds for Oxfam, a charity that works to alleviate poverty all over the world. Around 400 people are expected to take part, on the mountainside above the valley. In teams of four, they will take on a 60-kilometre snowshoe hike lasting all day and all night, completing the course in less than 30 hours. Come and join in the energetic, fun and sociable atmosphere! Why not take part in the challenge or support your favourite team?



# Out and about

VILLES  
& PAYS  
D'ART &  
D'HISTOIRE  
à DIRE



## PAYS D'ART *et d'histoire*

This is a quality label that promotes the heritage and architecture of the Abondance Valley to visitors and residents by providing a diverse tourism offering with explanatory facilities and events all year round run by qualified heritage guides.

## THE OLD CUSTOMS HOUSE

### Mountain Smuggling Interpretation Centre

Open the door of Châtel's Old Customs House to discover a different side to this cross-border region.

Children and adults will enjoy a fascinating trip back in time, learning about the game of cat and mouse that went on between the smugglers and the customs officers (known as 'gabelous') in the mountains of the Portes du Soleil before the advent of winter sports. With lots of eye-witness accounts and a fascinating exhibition packed with documents and illustrations, the Old Customs House tells the story of a picturesque world full of surprises!

#### Temporary exhibition:

'Customs Officers in the Snow' (until April 2018)

Get a breath of fresh air on the trail of the 'gabelous' on the snowy slopes! Learn all about their history, from tough challenges in the early days to the champions achieving greatness on skis!

#### Opening times

- > 24 December 2017 to 29 April 2018: daily except Saturday, 2pm to 6pm.
- > Closed on 25 December and 1 January.
- > Annual closure from 30 October to 23 December 2017.
- > Guided tours from Tuesday to Thursday at 3.30pm by arrangement (minimum 4 people).

#### Prices

##### Admission without tour:

- > Adults ..... €4
- > Children (8-15 years) ..... €3
- > Family ..... €12

##### Guided tour

- > Minimum 4 people ..... + €2/adult

#### INFORMATION:

##### > La Vieille Douane

Tel. 33 (0)4 50 71 75 11  
33 (0)4 57 26 90 04

lavieilledouane@mairiedechatel.fr

## BOWLING *centre*

'Le Chaudron' bowling alley and bar: 4 computerised AMF bowling lanes, pool table, table football, etc. Sports on giant screen and snacks: paninis, pizzas, etc. Groups by prior arrangement only.

#### INFORMATION:

- > Tel. 33 (0)6 26 13 25 23

## DISCOTHEQUE *'le Sloopy's'*

In the village centre, located in the Super-Châtel gondola lift building. Open every evening during the winter season and on weekends out of season, with 2 atmospheres (80s and General Pop). From midnight to 5.30am. Various themed evenings. Group bookings available (with supervision).

#### INFORMATION:

- > Tel. 33 (0)6 08 10 78 91  
33 (0)4 50 70 39 81

## CINEMAS

Châtel has 2 cinema screens featuring digital technology offering a different film every day, including premieres, exclusive screenings and classics.

#### INFORMATION:

##### > Cinéma Morclan 2000,

Panoramic screen, 300 seats, digital sound, SRD and DTS EX SOUND3  
Tel. 33 (0)4 50 73 21 04  
Fax. 33 (0)4 50 73 34 78

##### > Cinéma le Chamois,

small, cosy cinema, Dolby stereo sound  
Tel. 33 (0)4 50 73 29 54



## HERITAGE

### Châtel's other treasures

Enjoy an amazing and welcoming visit to the Crépy Sawmill at Villapeyron and the beautifully restored Chapelle de Très-les-Pierres, plus the many other chapels, oratories and shrines you will come across on your walks. These buildings are featured on the Châtel heritage map (available from Châtel Tourisme and the Old Customs House) and in the illustrated book *Châtel, sur les pas des Pionniers* by Dr Dresco.



**Lots**  
*for children to do*

## FAMILLE PLUS *Certification*

**Our entire resort is totally dedicated to providing the very best of the mountains for families and children.**

**Thanks to our hospitality, accommodation, services, events and innovations:**

- › A nursery to look after your little ones age 4 months to 4 years, 7 days a week in winter.
- › 2 snow nurseries to introduce them to skiing from the age of 3.
- › A beginners' area in Pré-la-Joux where all the family can learn to ski, plus a new magic carpet in Super-Châtel.
- › Three sledging areas for lots of family fun: safe areas tailored to different age groups.
- › Welcoming, caring restaurants and accommodation with family-friendly services and prices.
- › Safety: always a top priority on the pistes and our safe pedestrian walkways.
- › Entertainment to ensure the whole family has a whale of a time, with special events during FAMILLE PLUS Week.
- › A 'Family Group' price policy, with free ski passes for children up to age 5.

**We all pull together to ensure your holiday is nothing short of excellent!**



## A GOOD TIME, *guaranteed!*

During the school holidays, come to the La Châteline room for some family time, among friends, with giant wooden games, plus a fun play area for children under 6 (foam pit, Lego, etc.) and two treasure hunts (6 to 12-year-olds and adults) for exploring the village! Free activity.

## WOODEN DECORATION *workshops*

Workshop with drawing on wooden boards (3-6 years), object decoration workshops (4-8 years), key holders building working (7-13 years), clothespeg object building working (8-12 years). In the La Châteline room. Charge made.

## THEMED *weeks*

Throughout the season we run special activity weeks on different themes such as Christmas, the Carnival and the Farmers' Festival.

## FARM PRODUCE- TASTINGS *and tours*

**Come and get a flavour of our local produce and treat yourself to a taste of the good times.**

Every week there are group visits to farms and chalets in the village where you can discover the secrets of how our lovely valley produce is made. Look, taste and enjoy!

Information and bookings:

› **Châtel Tourisme**

Tel. 33 (0)4 50 73 22 44

## SLEDGING *areas*

### For sledging fun in complete safety

There are 3 sledging areas: one on the Sous Vannes nordic trail, accessible on foot from the centre, one at Super-Châtel (accessed via the gondola lift - fare payable - followed by a 15-minute walk) and one at Pré-la-Joux, where there is also a themed trail.







## ANIMATIONS

Once a week during the school holidays (Christmas, February and Easter) in the late afternoon (6pm) there is a free children's show, with clowns, magic, songs and more...

During these periods, additional activities include exploring Santa's house, storytelling and a letter-writing workshop, plus decoration-making workshops for the Carnival and Easter: plaster macaroons and tartlets, birds' nests, hens and chicks, etc.

And not forgetting fun with the Milka cow on the purple piste or for a snack at the bottom of the pistes.

## CHILDREN'S RECEPTION CENTRE *Les Moufflets*

**During the winter season, this centre is open daily from 7.45am to 6pm for locals and 9am to 5pm for holidaymakers.**

We take children aged 2½ months to 4 years (up to date of 4<sup>th</sup> birthday). The 300m<sup>2</sup> centre comprises 2 units (babies and toddlers) that provide for the comfort and wellbeing of your little ones. Booking strongly advised.

### INFORMATION AND BOOKINGS:

› Tel. 33 (0)4 50 81 38 19  
lesmoufflets74@orange.fr  
Go to [www.mairiedechatel.fr](http://www.mairiedechatel.fr) enfance



## LE CLUB *des Petits Montagnards*

**Châtel town council now operates an activities club (non-residential) for children aged 4 to 14 years during the school holidays.**

The children are looked after by qualified staff who supervise the various activities.

### Opening hours

- › 8am to 7pm Monday to Friday during the Christmas and February school holidays.
- › 8am to 6pm Monday to Friday during the autumn and Easter school holidays.
- › Closed on 25 December and 1 January.

### Enrolment compulsory:

› **Châtel Town Hall**  
Tel. 33 (0)6 45 64 39 09  
enfance@mairiedechatel.fr

### Skiing and nursery

- › We look after children aged 4 to 8 enrolled in Châtel ski school lessons in the morning.
  - › ½ day session, transport included, during Christmas and February school holidays.
  - › Open Sunday to Friday.
- Information and bookings:  
› Ask at your ski school.

Lots for children to do



## Merry-go-rounds

Tiny tots will love the magnificent merry-go-round with wooden horses, located right in the centre of the village and open every day.





# Eateries

## A tasty and sociable holiday experience

Sitting down to dinner with your family or friends to try the tasty local dishes cooked in the mountain style: what better way is there to titillate your taste buds and sharpen your appetite?

In Châtel, both on the snowy mountainsides and down in the valley, when you've had your fill of snow-sports you can enjoy our gourmet recipes which qualify for the flattering but deserved title of Savoyard specialities.

## RESTAURANTS

### Centre

- › **Antoine Restaurant** ..... F3  
Maître-Restaurateur\*  
Tel. 33 (0)4 50 73 29 53  
www.table-antoine.com
- › **Bistro M** ♦ ..... H3  
Tel. 33 (0)4 50 73 20 83
- › **La Bocca (+ pizzeria)** ..... H3  
Tel. 04 50 17 24 39
- › **Le Cerf** ..... H3  
Tel. 33 (0)4 50 73 24 12  
www.hotelmacchi.com
- › **Le Chesery (grill/pizzeria)** ♦ ..... F2  
Tel. 33 (0)4 50 26 25 12
- › **Le Comptoir** ♦ ..... G3  
Tel. 33 (0)6 01 92 11 30
- › **Le Fiacre (+ pizzeria)** ..... G2  
Maître-restaurateur\*  
Tel. 33 (0)4 50 73 30 46  
www.lefiacre74.com
- › **Le Hors Piste** ..... G3  
Tel. 33 (0)4 50 76 11 54
- › **Le Pierrier** ..... G3  
Maître-restaurateur\*  
Tel. 33 (0)4 50 73 24 15  
www.pierrier.com
- › **Le Refuge** ♦ ..... G2  
Tel. 33 (0)4 50 73 93 20  
www.lerefugedechatel.com
- › **La Réserve** ♦ ..... G2  
Tel. 33 (0)4 50 73 24 45
- › **La Table Savoyarde** ♦ ..... H3  
Tel. 33 (0)4 50 81 37 50
- › **Le Vieux Four** ..... F2  
Maître-restaurateur\*  
Tel. 33 (0)4 50 73 30 56

### Linga

- › **La Ripaille** ..... L6  
Tel. 33 (0)4 50 73 32 14

### Loy

- › **Loy** ..... J4  
Tel. 33 (0)4 50 73 32 29  
www.wl74.com

### La Béchigne

- › **Le Castellan** ..... E3  
Tel. 33 (0)4 50 73 20 86  
lecastellan@wanadoo.fr
- › **Le Chalet** ♦ ..... F5  
Tel. 33 (0)4 50 73 30 60  
www.lekandahar.com

### Petit-Châtel

- › **Le 32** ..... B2  
Tel. 33 (0)4 50 73 20 08  
www.hotel-arcenciel.fr

### Route de Thonon

- › **Le Roitelet** ..... D3  
Maître-Restaurateur\*  
Tel. 33 (0)4 50 73 24 79  
www.hotel-le-roitelet.com

### Vonnes

- › **L'Abreuvoir** ♦ ..... K2  
Tel. 33 (0)4 50 73 24 89
- › **Les Contrebandiers** ..... J2  
Tel. 33 (0)4 50 73 25 80
- › **Fleur de Neige** ♦ ..... I3  
Maître-Restaurateur\*  
Tel. 33 (0)4 50 73 20 10  
www.hotel-fleurdeneige.fr
- › **Le Monchu** ♦ ..... K2  
Tel. 33 (0)4 50 73 28 51

Châtel's hotel restaurants are also open to non-residents.

## PIZZERIAS

- › **La Casa Pizz'** ..... H3  
Tel. 33 (0)9 50 90 61 85
- › **Le Hors Piste** ..... G3  
Tel. 33 (0)4 50 76 11 54
- › **L'Oxy Peak** ..... G3  
Tel. 33 (0)4 50 73 95 55
- › **Snopizz'** ..... L6  
Tel. 33 (0)77 46 30 04

## CRÊPERIE

- › **La Galettière (+light bites)** ..... H3  
Tel. 33 (0)4 50 73 24 99

## LIGHT BITES, SNACKS

- › **L'Oxy Peak** ..... G3  
Tel. 33 (0)4 50 73 95 55

## BARS / PUBS

- › **L'Avalanche (pub)** ♦ ..... G3  
Tel. 33 (0)4 50 81 67 97  
www.the-av.com
- › **Le Chaudron Bar Bowling** ..... F2  
Tel. 33 (0)6 26 13 25 23
- › **Le Chevy Bar** ..... B2  
Tel. 33 (0)4 50 73 20 08  
www.hotel-arcenciel.fr
- › **Bar la Godille** ..... G3  
Tel. 33 (0)4 50 72 57 69  
facebook.com/barlagodille
- › **Isba bar** ♦ ..... G3  
Tel. 33 (0)4 50 73 23 46
- › **Nazca Bar** ♦ ..... G2  
Tapas et cuisine du monde  
Tel. 33 (0)4 56 30 72 17  
www.nazcabar.com
- › **La Réserve** ♦ ..... G3  
Tel. 33 (0)4 50 73 24 45

## MOUNTAIN RESTAURANT

### Col du Saix

- › **Le Chalet de Théo** ..... A1  
Tel. 33 (0)6 07 14 49 34

### Super-Châtel

- › **La Terrasse du Morclan** ..... G1  
Tel. 33 (0)4 50 73 20 35  
cmmontagne@orange.fr
- › **Les Portes du Soleil** ..... G1  
Tel. 33 (0)4 50 73 32 46  
restaurant-porte-du-soleil@orange.fr

### Linga

- › **La Ferme des Pistes "Luessert"** ..... M5  
Tel. 33 (0)4 50 81 35 81
- › **La Leiche - "Luessert"** ..... M5  
Tel. 33 (0)4 50 81 68 40  
www.hotel-arcenciel.fr
- › **Le Stade** ..... M6  
Tel. 33 (0)4 50 73 24 53  
www.hotel-leschuss.fr

### Plaine Dranse

- › **L'Alpage** ..... M4  
Tel. 33 (0)4 50 81 31 50
- › **Le Bois Prin** ..... M4  
Tel. 33 (0)4 50 81 36 31  
www.lesriolets.com
- › **Chez Babeth Le Vieux Chalet** ..... L4  
Tel. 33 (0)4 50 73 38 77  
www.vieuxchalet.com
- › **Chez Crépy La Chaux des Rosées** ..... M4  
Tel. 33 (0)4 50 73 31 19  
www.crepy.net
- › **Mountain Inn** ..... L3  
**Chez Denis** ..... L3  
Tel. 33 (0)4 50 73 36 29  
chezdenis.plainedranse@hotmail.com
- › **La Folie des Neiges** ..... M4  
Tel. 33 (0)9 88 66 39 66  
lafoliedesneiges@gmail.com
- › **La Pierre aux Loups** ..... M4  
Tel. 33 (0)4 50 81 33 90  
www.pierreauloups.fr
- › **Plaine Dranse self-service** ..... L4  
**Vuarand** ..... L4  
Tel. 33 (0)4 50 73 32 70
- › **La Tan Ô Marmottes** ..... M4  
Tel. 33 (0)4 50 81 37 51

### Pré-La-Joux

- › **La Perdrix Blanche** ..... M9  
Tel. 33 (0)4 50 73 22 76  
www.laperdrixblanche.com



# Useful addresses

## Make a beeline for... our pick of the best addresses

For all your needs and après-ski fun, try some retail therapy or enjoy our regional produce and local crafts, including equipment and interior decoration.

## TRADESPEOPLE

### Interior fittings

› **Atelier de Théo** ♦ ..... H3  
Tel. 33 (0)4 50 73 30 86  
contact@atelierdetheo.fr  
www.atelierdetheo.com

› **SARL Premat** ♦ ..... C3  
Tel. 33 (0)4 50 73 39 29

### Heating, bathrooms, plumbing

› **SARL Premat** ♦ ..... C3  
Tel. 33 (0)4 50 73 39 29

### Kitchens

› **Atelier de Théo** ♦ ..... H3  
Tel. 33 (0)4 50 73 30 86  
contact@atelierdetheo.fr  
www.atelierdetheo.com

› **SARL Châtel Service** ♦ ..... H3  
Tel. 33 (0)4 50 73 24 90  
Fax. 33 (0)4 50 73 24 65  
chatel.service@wanadoo.fr

### Garden and green space maintenance

› **Entretien Maisons et Jardins** ..... C1  
Tel. 33 (0)6 30 36 45 75  
charbonnelph@orange.fr  
charbonnelph.wix.com/maisons-jardins

› **Jardival Paysages** ♦ ..... J2  
Tel. 33 (0)6 88 18 77 63  
rubinfreddy@gmail.com

### Joinery, carpentry, roofing

› **SARL Rubin Marcel & Fils** ♦ ..... J8  
Tel. 33 (0)4 50 73 32 08  
rubinm-charpente@orange.fr

### Landscapers

› **Entretien Maisons et Jardins** ..... C1  
Tel. 33 (0)6 30 36 45 75  
charbonnelph@orange.fr  
charbonnelph.wix.com/maisons-jardins

› **Jardival Paysages** ♦ ..... J2  
Tel. 33 (0)6 88 18 77 63  
rubinfreddy@gmail.com

› **Rubin Joël** ♦ ..... J8  
Tel. 33 (0)4 50 73 32 83  
33 (0)6 80 04 72 95  
www.joel-rubin.com

### Civil engineering

› **L.E.C. TP Rubin Serge** ♦ ..... D5  
Tel. 33 (0)4 50 73 53 56  
33 (0)6 08 34 35 70  
www.lectp.com

› **Rubin Joël** ♦ ..... J8  
Tel. 33 (0)4 50 73 32 83  
33 (0)6 80 04 72 95  
www.joel-rubin.com

› **SAS Rubin Gilles & Alfred** ♦ ..... D5  
Tel. 33 (0)4 50 73 31 42  
Fax. 33 (0)4 50 81 36 00  
rubingilles@wanadoo.fr

## BUSINESSES

### Food shops

#### Butchers

› **Favre (caterer)** ♦ ..... G3  
Tel./Fax. 33 (0)4 50 73 20 65

› **Tochet** ♦ ..... D3  
Tel. 33 (0)4 50 73 23 19

#### Bakers

› **SAS Grillet Centre** ♦ ..... G2  
Tel. 33 (0)4 50 73 20 55

› **SAS Grillet l'Essert** ..... K5  
Tel. 33 (0)4 50 73 32 79

› **Le Grenier à Pains** ♦ ..... G3  
Tel. 33 (0)4 50 17 21 47

#### Take-away food

› **Favre (caterer)** ♦ ..... G3  
Tel./Fax. 33 (0)4 50 73 20 65

#### Regional produce

› **Délices de Châtel** ..... H3  
Tel. 33 (0)4 50 73 29 96  
Fax. 33 (0)4 50 73 39 92

› **Grenier de Châtel** ..... H3  
Tel. 33 (0)4 50 73 39 84  
Fax. 33 (0)4 50 73 39 92  
www.grenier-chatel.com

#### Mini-market

› **Sherpa** ♦ ..... H3  
Tel. 33 (0)4 50 73 21 54  
Fax. 33 (0)4 50 73 28 20  
www.sherpa.net

## CRAFTS, ART, SOUVENIR GIFTS

› **Atelier de Théo** ♦ ..... H3  
Tel. 33 (0)4 50 73 30 86  
contact@atelierdetheo.fr  
www.atelierdetheo.com

› **Couleur Bois** ..... H3  
Tel. 33 (0)4 50 17 41 43

› **Déclic Photo** ..... G3  
Tel. 33 (0)4 50 73 31 00

› **La Lavandière** ..... H3  
New baby gifts  
Tel. 33 (0)6 87 31 18 19  
Tel./Fax. 33 (0)4 50 73 30 49

› **Le Comptoir des Marmottes** ♦ ..... G3  
Tel. 33 (0)4 50 81 68 02  
www.comptoirdesmarmottes.com

› **Les Poteries de l'Ermitage**  
(pottery workshop) ..... H2  
Tel. 33 (0)4 50 73 01 32

› **Studio Yvon** ♦ ..... F3  
Tel. 33 (0)4 50 73 22 17

## Beauty

### Hairdresser

› **Ci'Hair** ..... H3  
Tel. 33 (0)4 50 72 22 53

› **Martine coiffure** ♦ ..... L6  
Fashion accessories  
Tel. 33 (0)4 50 73 32 28

### Beauty salon, perfumerie

› **Pétales** ♦ ..... H3  
Tel. 33 (0)4 50 81 37 61

## Curios etc.

› **Les Trésors de Thanoée** ♦ ..... H3  
Gifts, home décor, café  
Tel. 33 (0)6 80 37 89 19

## Website design advertising, communication

› **Alpes-Actu Conseil** ♦ ..... H3  
Tel. 33 (0)4 50 73 58 22  
www.alpesactu.biz

## Graphic design

› **Atelier Graff, Way of Spray** ♦ ..... D5  
Tel. 33 (0)6 14 46 14 72  
www.wayofspray.com

## Laundrettes

› **Barbossine** ..... B2  
Tel. 33 (0)4 50 73 24 36  
Fax. 33 (0)4 50 73 37 74

› **La Lavandière** ♦ ..... H3  
Tel. 33 (0)6 87 31 18 19  
Tel./Fax. 33 (0)4 50 73 30 49

## High chair and cot hire

› **Vert'Pom** ♦ ..... H3  
Tel. 33 (0)9 67 34 83 05

## Baby carrier and pushchair hire

› **La Béchigne Sports Ski Set** ..... F4  
Tel./Fax 33 (0)4 50 73 61 17  
labechignesports@gmail.com

› **Charles Sports Ski Set** ..... F3  
Tel./Fax. 33 (0)4 50 73 24 37  
charlesport@wanadoo.fr  
www.charles-sports.com

› **Intersport** ♦ ..... G3  
Tel. 33 (0)4 50 73 20 56  
Fax. 33 (0)4 50 81 37 21  
www.intersport-chatel.com

## Baby carrier hire

› **Mountain Ride - C. Mésièrè** ♦ ..... L6  
Tel. 33 (0)4 50 73 58 58  
www.twinner-chatel-linga.fr

› **Richard Sports bis** ..... G3  
Tel. 33 (0)4 50 73 36 69  
Fax. 33 (0)4 50 73 29 59  
www.richardsports.com

› **Twinner Centre - M. Mésièrè** ..... H3  
Tel. 33 (0)4 50 73 30 80  
twinner-chatel-centre@orange.fr  
www.twinner-chatel-centre.fr

› **Vertical Horizons** ..... K5  
Tel. 33 (0)4 50 73 38 91  
info@verticalchatel.com  
www.verticalchatel.com

## Sheet hire

› **La Lavandière** ..... H3  
Tel./Fax. 33 (0)4 50 73 30 49

› **Vert'Pom** ♦ ..... H3  
Tel. 33 (0)9 67 34 83 05

## Household

### Furniture - Decoration

#### Household linen

› **Atelier de Théo** ♦ ..... H3  
Tel. 33 (0)4 50 73 30 86  
contact@atelierdetheo.fr  
www.atelierdetheo.com

› **La Lavandière** ..... H3  
Tel. 33 (0)6 87 31 18 19  
Tel./Fax. 33 (0)4 50 73 30 49

› **Le Comptoir des Marmottes** ♦ ..... G3  
Tel. 33 (0)4 50 81 68 02  
www.comptoirdesmarmottes.com

### Domestic appliances,

#### TV, Hi-fi

› **SARL Châtel Service** ♦ ..... G3  
Tel. 33 (0)4 50 73 24 90  
Fax. 33 (0)4 50 73 24 65  
chatel.service@wanadoo.fr

### Ironmongery, hardware,

#### domestic appliances

› **SARL Châtel Service** ♦ ..... H3  
Tel. 33 (0)4 50 81 34 60  
Fax. 33 (0)4 50 73 24 65  
chatel.service@wanadoo.fr

## Stationery and office supply

› **Le Comptoir des Marmottes** ♦ ..... G3  
Tel. 33 (0)4 50 81 68 02  
www.comptoirdesmarmottes.com

## Photography

› **Déclic Photo** ..... G3  
Tel. 33 (0)4 50 73 31 00

› **Studio Yvon** ♦ ..... F3  
Tel. 33 (0)4 50 73 22 17

## Newsagents

- › **Tobacco-Newspapers**
- Lotto-Souvenirs** ♦ ..... G3  
Tel. 33 (0)4 50 73 20 75  
Fax. 33 (0)4 50 81 34 81  
caroline.girardoz@wanadoo.fr

## Dry cleaning

- › **Vert'Pom** ♦ ..... H3  
Tel. 33 (0)9 67 34 83 05

## Baby goods

- › **Pharmacy** ♦ ..... G3  
Tel. 33 (0)4 50 73 20 03
- › **Sherpa** ♦ ..... H3  
Tel. 33 (0)4 50 73 21 54  
Fax. 33 (0)4 50 73 28 20  
www.sherpa.net

## Clothes, fashion

- › **Alp'Eclat** ..... G2  
Clothing and jewellery  
Tel. 33 (0)4 50 81 22 10  
Facebook.com/AlpEclat
- › **Intersport** ♦ ..... G3  
Tel. 33 (0)4 50 73 20 56  
Fax. 33 (0)4 50 81 37 21  
www.intersport-chatel.com
- › **Richard Sports Bis** ..... G3  
Tel. 33 (0)4 50 73 36 69  
Fax. 33 (0)4 50 73 29 59  
www.richardsports.com
- › **Sport 2000-Germain Sports** ..... G2  
Tel. 33 (0)4 50 73 22 82  
germainssports@wanadoo.fr  
www.germainsports.com
- › **Switch5** ♦ ..... G3  
Tel. 33 (0)4 50 81 61 79  
33 (0)6 15 01 90 43  
www.switch5boardshop.com
- › **Les Trésors de Thanoée** ♦ ..... H3  
Tel. 33 (0)6 80 37 89 19
- › **Twiner Centre - M. Mésièrè** ..... H3  
Tel. 33 (0)4 50 73 30 80  
twiner-chatel-centre@orange.fr  
www.twiner-chatel-centre.fr

## SERVICES

### Banks

- › **CIC Lyonnaise de banque (+cashpoint)** ♦ ..... F3  
Tel. 0 820 300 837  
Fax. 33 (0)4 50 81 33 32
- › **Crédit Agricole (+cashpoint)** ♦ ..... F2  
Tel. 33 (0)4 50 19 40 65  
Fax. 33 (0)4 50 81 33 58
- › **Crédit Mutuel (+cashpoint)** ♦ ..... F3  
Tel. 33 (0)4 50 07 24 50  
Fax. 33 (0)4 50 73 54 57  
02402@creditmutuel.fr

### Concierge service

- › **Vert'Pom** ♦ ..... H3  
Tel. 33 (0)9 67 34 83 05

### Transport

- Taxis and minibuses
- › **Bernadette & Joël Rubin** ♦ ..... J8  
Tel. 33 (0)4 50 73 32 83  
33 (0)6 08 05 89 31  
www.joel-rubin.com

- Passenger transport
- › **Autocars S.A.T.** ..... F3  
Tel. 33 (0)4 50 73 24 29  
www.sat-autocars.com
- › **Bernadette & Joël Rubin** ♦ ..... J8  
Tel. 33 (0)4 50 73 32 83  
33 (0)6 76 61 57 98  
www.joel-rubin.com
- › **Magic Transfers** ♦ ..... C2  
Tel. 33 (0)6 43 26 58 18  
info@magic-transfers.com  
www.magic-transfers.com
- › **Professional Transfers** ♦ ..... C1  
Tel. 33 (0)6 32 07 90 07 / 33 (0)6 77 28 06 10  
00 44 845 653 2096  
www.professionaltransfers.com

### Snow clearance

- › **L.E.C. TP Rubin Serge** ..... D5  
Tel. 33 (0)4 50 73 53 56  
33 (0)6 08 34 35 70  
www.lectp.com
- › **Joël Rubin** ..... J8  
Tel. 33 (0)4 50 73 32 83  
33 (0)6 80 04 72 95  
www.joel-rubin.com
- › **SAS Rubin Gilles & Alfred** ..... D5  
Tel. 33 (0)4 50 73 31 42  
Fax. 33 (0)4 50 81 36 00  
rubingilles@wanadoo.fr
- › **P. Vuarand** ..... D5  
Tel. 33 (0)4 50 73 27 59  
33 (0)6 08 30 29 71  
Fax. 33 (0)4 50 73 28 11

### For the car

- Garages
- › **P. Vuarand** ♦ ..... D5  
Tel. 33 (0)4 50 73 27 59  
33 (0)6 08 30 29 71  
Fax. 33 (0)4 50 73 28 11
- Motor accessories
- › **P. Vuarand (breakdowns)** ..... F3  
Tel. 33 (0)4 50 73 68 26  
33 (0)4 50 73 27 59  
etsvuarand@aliceadsl.fr

### Car washes

- › **"Flots Bleus" drainage point** ♦ ..... K5  
Motorhomes and coaches

### Motorhome stopover

- › **Pré-la-Joux** ♦ ..... L9  
Tel. 33 (0)4 50 73 31 25

### Underground car park

- › **Place de l'église** ..... F3  
Tel. 33 (0)4 50 81 39 61

### Vehicle hire

- Cars and 4x4
- › **P. Vuarand (breakdowns)** ♦ ..... D5  
Tel. 33 (0)4 50 73 27 59  
33 (0)6 08 30 29 71  
etsvuarand@aliceadsl.fr
- Construction machinery
- › **L.E.C. TP Rubin Serge** ♦ ..... D5  
Tel. 33 (0)4 50 73 53 56  
33 (0)6 08 34 35 70  
www.lectp.com
- › **Rubin Joël** ♦ ..... J8  
Tel. 33 (0)4 50 73 32 83  
33 (0)6 80 04 72 95  
www.joel-rubin.com

## Ski hire (delivered to your door)

- › **SkiHire2U** ..... G1  
Tel. 33 (0)4 50 72 19 70  
33 (0)6 87 48 97 92  
info@skihire2u.com  
www.skihire2u.com

## Ski box (ski storage)

- › **Super-Châtel, gondola lift** ..... G1  
Tel. 33 (0)4 50 73 20 25
- › **Linga Ski Shop** ..... M6  
Tel. 33 (0)4 50 81 04 21  
www.location-ski-chatel.com
- › **Vonnes Lake ticket office** ..... K2  
Tel. 33 (0)4 50 81 37 39

## HEALTHCARE

### Medicine

- › **Dr Chapelle** ..... G3  
Tel. 33 (0)4 50 73 32 01
- › **Dr Dresco** ..... H3  
Tel. 33 (0)4 50 73 30 00
- › **Health centre** ..... F3  
Tel. 33 (0)4 50 73 08 36  
33 (0)6 86 74 54 76
- › **Pharmacy** ..... G3  
Tel. 33 (0)4 50 73 20 03
- Masseurs, physiotherapists**
- › **P. David / F. Girard-Berthet / G. Girard-Berthet / A. De Kelper / C. Servais** ..... G3  
Tel. 33 (0)4 50 73 24 44
- › **D. Thoule / M.Hachemi** ..... J4  
Tel. 33 (0)4 50 81 77 71

### Osteopath

- › **F. Girard-Berthet D.O.** ..... G2  
Tel. 33 (0)4 50 73 24 44
- › **J. Hubschwerlin D.O.** ..... J4  
Tel. 33 (0)4 50 81 77 71  
33 (0)6 62 09 46 52

### Dentist

- › **Dr Asselborn** ..... H3  
Tel. 33 (0)4 50 73 00 00  
33 (0)6 88 88 02 88

### Hospitals

- › **Thonon**  
Tel. 33 (0)4 50 83 20 00
- › **Monthey (Switzerland)**  
Tel. 00 41 24 473 17 31
- › **Geneva (Switzerland)**  
Tel. 00 41 22 372 33 11
- Veterinary surgeon
- › **Dr Jacob (Abundance)**  
Tel. 33 (0)4 50 73 05 01

## MUNICIPALITY

- › **Châtel Tourisme** ..... G3  
Tel. 33 (0)4 50 73 22 44  
Fax. 33 (0)4 50 73 22 87
- › **Town Hall** ..... F3  
Tel. 33 (0)4 50 73 23 98  
Fax. 33 (0)4 50 73 27 48  
mairie@mairiedechatel.fr  
www.mairiedechatel.fr
- › **Post office** ..... E3  
Tel. 36 31  
From December to April: Monday to Friday 9am-12.15pm/2pm-5pm  
From May to November: Monday to Friday 9am-12.15pm
- › **Ski lift company (SAEM)** ..... E3  
Tel. 33 (0)4 50 73 34 24  
Fax. 33 (0)4 50 73 36 53  
ski@chatel.com  
www.chatel.com

## MISCELLANEOUS

- › **Châtel Residents' Association**  
contact@residentschatel.fr  
www.residentschatel.fr
- › **Catholic church services**  
Saturday at 6pm, mass on alternate weeks with La Chapelle d'Abondance. Sunday at 10.45am, Abundance. Parish of Saint Maurice in the Abundance Valley.  
Presbytery in Abundance  
Tel. 33 (0)4 50 73 78 52  
st-maurice@diocese-annecy.fr  
www.diocese-annecy.fr/st-maurice

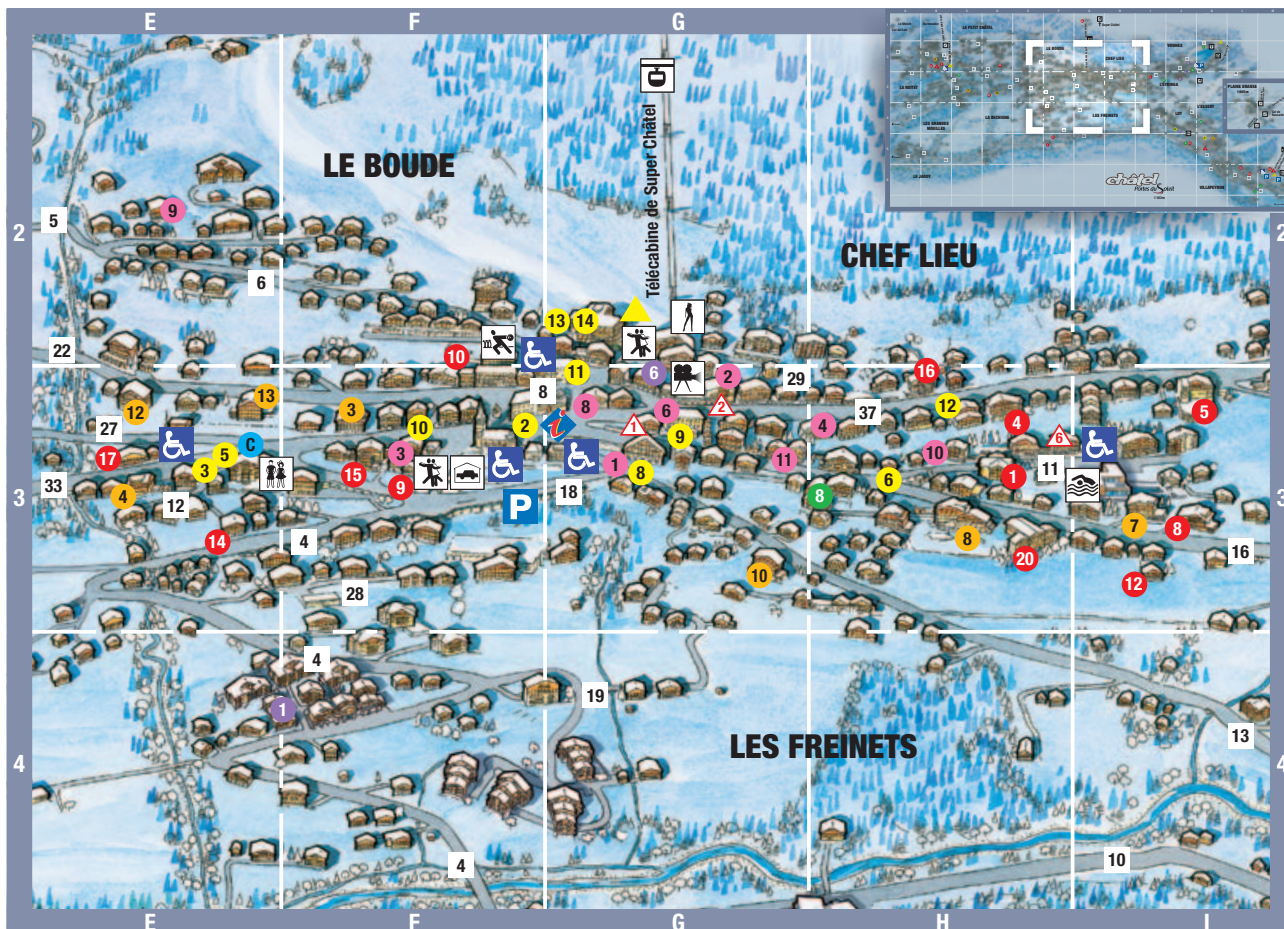
### Weather

- › **Chamonix météo**  
Tel. 33 (0)8 99 71 02 74
- › **Geneva**  
Tel. 00 41 848 800 162

## EMERGENCY

- › **Gendarmerie (police)** ..... G2  
Tel. 17
- › **Municipal police** ..... G2  
Tel. 33 (0)4 50 73 31 25
- › **Fire service**  
Tel. 18 and 112
- › **SAMU (emergency medical services)**  
Tel. 15





# VILLAGE CENTRE ENLARGEMENT

For details of hotel availability go to [www.chatel.com](http://www.chatel.com)

Village centre enlargement

## Useful numbers

- G3 **Châtel Tourisme**  
Tel. 04 50 73 22 44
- 2 F3 **Town Hall** Tel. 04 50 73 23 98
- 3 E3 **Post office** Tel. 36 31
- 5 E3 **Ski lift company (SAEM)**  
Tel. 04 50 73 34 24
- Medicine**
- 6 H3 **Dr Dresco** Tel. 04 50 73 30 00
- 8 G3 **Dr Chapelle** Tel. 04 50 73 32 01
- 9 G3 **Pharmacy** Tel. 04 50 73 20 03
- Health centre**
- 10 F3 Tel. 04 50 73 08 36  
or 06 86 74 54 76
- Masseurs, physiotherapists**  
P. David / F.Girard-Berthet /  
G. Girard-Berthet / C. Servais /  
A. De Kelper
- 11 G3 Tel. 04 50 73 24 44
- Dentist**  
Dr Asselborn  
Tel. 04 50 73 00 00
- 12 H3
- 13 G2 **Municipal police**  
Tel. 04 50 73 31 25
- 14 G2 **Gendarmerie (police)**

## Hotels

- 1 H3 Macchi \*\*\*\*
- 4 H3 Belalp \*\*\*
- 5 I3 Fleur de Neige \*\*\*
- 8 I3 Tremplin \*\*\*
- 10 F2 Armaillis \*\*
- 12 I3 Bergerie \*\*
- 14 E3 Castellan \*\*
- 15 F3 Chalet d'Alzée \*\*
- 16 H2 Choucas \*\*
- 17 E3 Edelweiss \*\*
- 20 H3 Panoramic \*\*
- 9 F3 Alpaka

## Estate agencies

- 1 G3 Agence Cruz
- 2 G3 Agence Altitude
- 3 F3 Immobilière du Val
- 4 H3 LB Immobilier
- 6 G3 Bo Immobilier
- 8 G3 MGM
- 9 E2 Roca Immobilier

- 10 H3 Châtel Immo
- 11 G2 FR Immobilier

## Holiday centres

- 3 F3 Coccinelles
- 4 E3 Colline aux Oiseaux
- 7 I3 Nid Alpin
- 8 H3 Ours Blanc
- 10 G3 Vacances Voyages Loisirs
- 12 E3 Soleil Couchant
- 13 E3 Soleil Levant
- 14 D3 Val Joli

## Tourism residences

- 1 E-F4 CGH - Chalets d'Angèle \*\*\*\*
- 6 G2-3 Odalys - Les Fermes de Châtel \*\*\*\*

## Other accommodation

- 8 H3 Central Châtel Hotel
- C E3 Châtel réservation

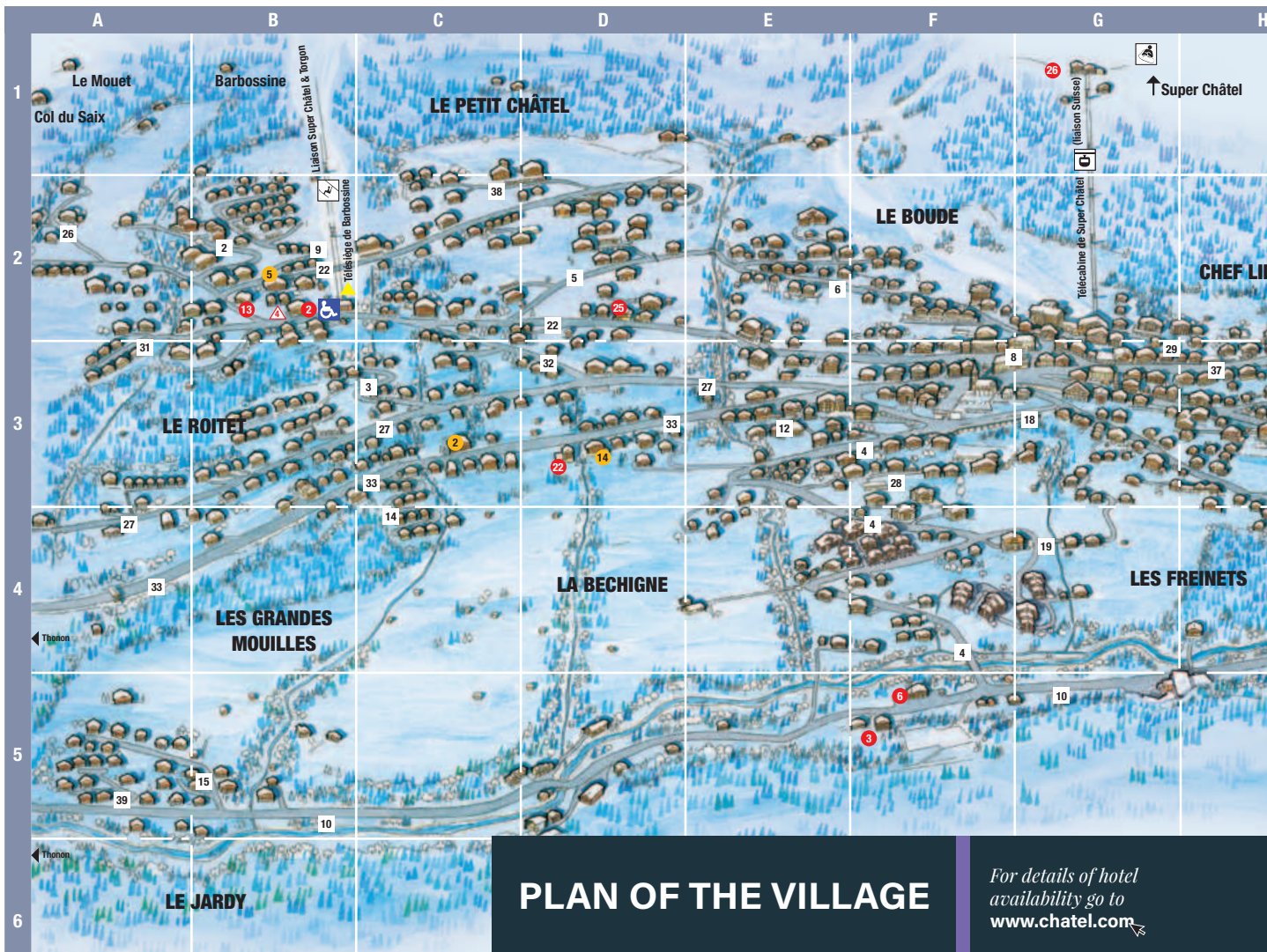
## Leisure

- E/F3 Les Mouflets Day Nursery
- G2 Ski passes sale
- G3 École du Ski Français
- G3 École de Ski Pro Skiing
- H3 École Ski Academy
- F2 Bowling centre
- I3 Aqua centre
- G3 Cinemas
- F3 La Châtélaine room
- G2 La Musardière room
- G2 Discotheque
- F3 Underground car park
- Gondola lift

## Roads and ways

- 4 F3-F5 Béchnigne (route de la)
- 5 D2-E2 Bouchet (route du)
- 6 F2-G3 Boude (route du)
- 8 F3-G3 Centre (route du)
- 10 A5-K5 Dranse (route de la)
- 11 H3 Étringa (chemin de l')
- 12 E3 Fiolaz (chemin de la)
- 13 G3-K5 Freinets (route des)
- 16 G3-K5 Linga (route du)
- 18 F3-G3 Meurba (route de)
- 19 G4 Mouilles (chemin des)
- 22 D2-F3 Petit-Châtel (route du)
- 27 A4-E3 Roitet (route du)
- 28 F3 Ruisseaux (chemin des)
- 29 G3 Sous le Crêt (chemin de)
- 33 A4-E3 Thonon (route de)
- 37 G3-K1 Vannes (route de)





## PLAN OF THE VILLAGE

For details of hotel availability go to [www.chatel.com](http://www.chatel.com)

### Useful numbers

- 15 J4 D.Thoulet / J. Hubschwerlin / M. Hachemi  
Tel. 04 50 81 77 71

### Hotels

- 2 B2 Arc en Ciel \*\*\*  
11 L6 Auberge de la Dranse \*\*\*  
3 F5 Au Bois de Lune \*\*\*  
6 F5 Kandahar \*\*\*  
7 M9 Perdrix Blanche \*\*\*  
23 M6 Schuss \*\*\*  
18 B2 Bienvenu \*\*  
18 L6 Eliova L'Eau Vive \*\*  
21 J5 Renard \*\*  
22 D3 Roitelet \*\*  
25 D2 Triolets \*\*  
26 G1 L'Escale

### Holiday centres

- 1 K5 Cascade  
2 C3 Clos Savoyard  
5 B2 Cyclamens  
14 D3 Val Joli

### Tourism residences

- 2 J2 Flèche d'Or \*\*\*  
3 J3 Néméa - Le Grand Lodge \*\*\*  
5 J3 Néméa - Le Grand Ermitage \*\*\*\*

### Residence with hotel services

- 4 J4 Résidence Chalet Joséphine

### Other accommodation

- 1 K8 1861 Chatel Hostel  
2 M6 Le P'tit Cornillon  
3 L6 Artes - Les Combelles \*\*\*  
5 J3 Chalet Carnauba  
6 J2 Lac de Vonnes  
7 K2 Chalet La Sonnaïlle  
11 I8 Chalet Aaron  
C K5 Camp site l'Oustalet \*\*\*\*

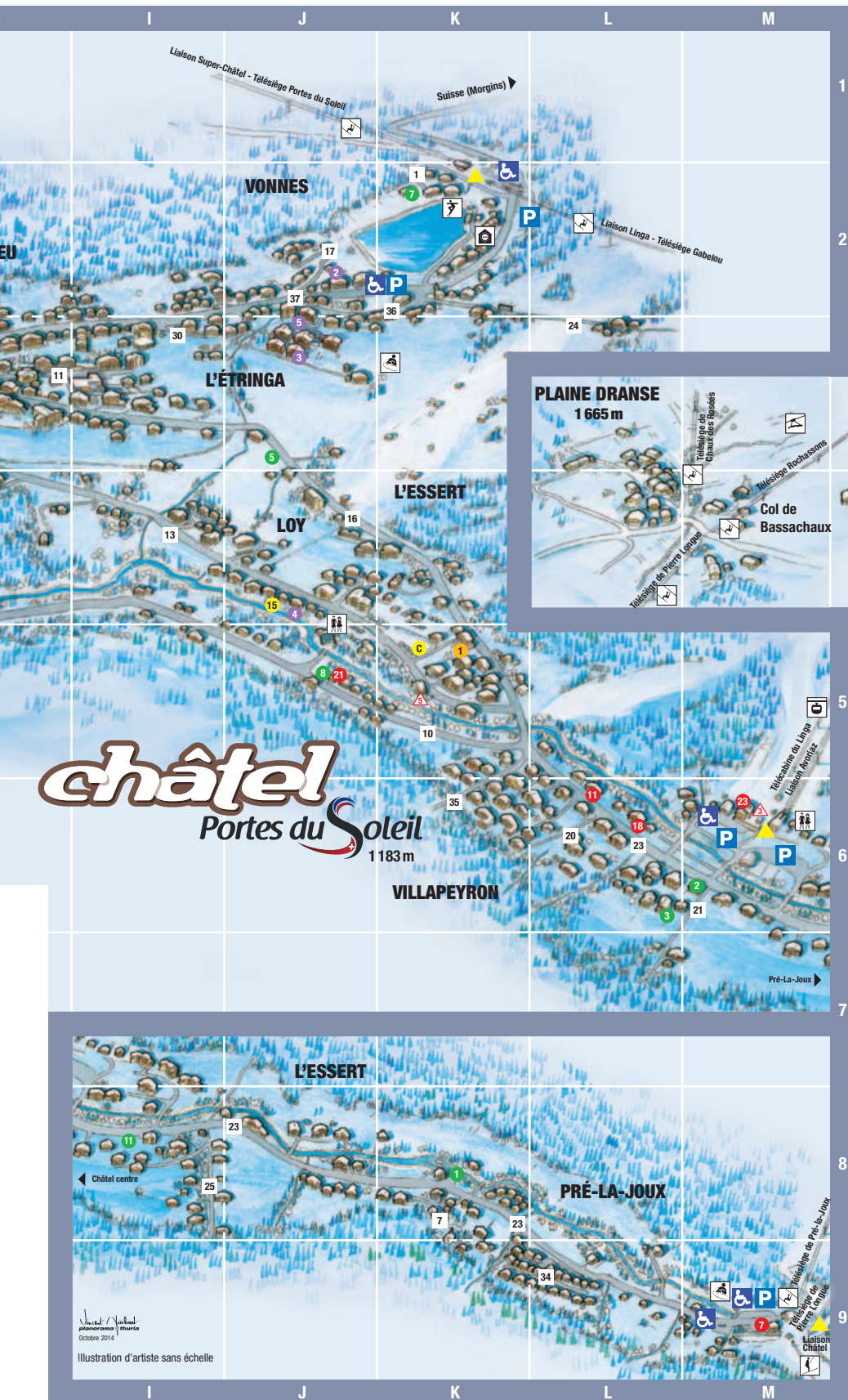
### Leisure

- M6 Les Pitchounes  
J5 Les Marmottons  
B2/K2/M6/M9 Ski passes sale  
M6 École de Ski Châtel Sensations  
B2 Stages Henri Gonon  
K5 École de ski Snowride  
K2 Mountain Smuggling Interpretation Centre  
M3 Fantastique  
K2 Ice rink  
G1/K3/M9 Sledging area  
Chairlift  
Gondola lift  
Ski tow

### Roads and ways

- 1 K2 Argeats (chemin des)  
2 B2 Barbossine (chemin de)  
3 C3 Batarde (chemin de la)  
4 F3-F5 Béchigne (route de la)  
5 D2-E2 Bouchet (route du)  
6 F2-G3 Boude (route du)  
7 K8 Cascade (chemin de la)  
8 F3-G3 Centre (route du)  
9 B2 Dément (chemin du)  
10 A5-K5 Dranse (route de la)  
11 H3 Étringa (chemin de l')  
12 E3 Fiolaz (chemin de la)  
13 G3-K5 Freinets (route des)  
14 C4 Grandes Mouilles (chemin des)  
15 B5 Jardy (chemin du)  
16 G3-K5 Linga (route du)  
17 J2 Méjaille (chemin de la)  
18 F3-G3 Meurba (route de)  
19 G4 Mouilles (chemin des)  
20 L6 Moulin (chemin du)  
21 M6 Pessat (chemin du)  
22 D2-F3 Petit-Châtel (route du)  
23 L5-I8-M9 Pré-la-Joux (route de)  
24 L3 Ramines (chemin des)  
25 I8 Ravine (chemin de la)  
26 A2 Riz (chemin du)  
27 A4-E3 Roïtet (route du)  
28 F3 Ruisseaux (chemin des)  
29 G3 Sous le Crêt (chemin de)  
30 I3 Sous-Vonnes (chemin de)  
31 A3 Sur la Côte (chemin de)  
32 C2-D3 Taude (route du)  
33 A4-E3 Thonon (route de)  
34 K8 Tré-les-Pierres (chemin de)  
35 K6 Villapeyron (chemin de)  
36 K2 Vonnes (chemin de)  
37 G3-K1 Vonnes (route de)  
38 D2 Vora (chemin de la)  
39 A5 Vorres (chemin des)





# RADIO CHÂTEL RTL2

Your radio station on 98.8



All year round or during your holiday, winter and summer, listen to our live holiday news bulletins... Weather, mountain information, pistes, what's on, etc.

INFORMATION:

Tel. 33 (0)4 50 73 23 12  
 Fax. 33 (0)4 50 81 39 48  
 radiochattel@chattel.com  
 www.radiochattel.fr

# CHÂTEL TV

All the latest holiday information



Weather, what's on, cinema showings, major events, interviews, features and more... To get Châtel TV on your TNT television, simply run a new automatic channel search. To watch Châtel TV on the Internet:

LOG ON TO:  
 www.chattel.tv

# GETTING AROUND

Green light for sustainable tourism

## The little sightseeing train

The little sightseeing train takes you on a full tour of Châtel, the hamlets, the streets and the magnificent chalets... Sit back and enjoy the ride to the four corners of the village.

## Free shuttle bus service

Leave the car behind! Use our free shuttle bus service to go skiing or shopping. And also: the little sightseeing train and free shuttle buses are a great way of getting around the resort and different districts! Details of the bus routes and timetables are available from Châtel Tourisme.

INFORMATION:

Châtel Bus  
 Tel. 33 (0)7 86 15 05 51

Plan of the village

Illustration d'artiste sans échelle

Illustration d'artiste sans échelle

# CHÂTEL

*4 Seasons in the Sun*



## Season highlights

### Châtel Christmas

*24 to 29 December*

### New Year 2018

*31 December*

### 6 Resorts Tournament

*13 to 18 February*

### Raclett' O Show

*14 February*

### Floodlit Big Air Session

*16 February*

### Châtel Classic

*19 to 23 February*

### Ladies Night Tour

*20 February*

### Mardi Gras (Famille Plus)

*27 February*

### Farmer's Festival (Famille Plus)

*28 February*

### Oxfam Wintertrail

*10 to 11 March*

### Razorsnowbike

*11 March*

### Rock The Pistes Festival

*18 March*

### French Ski Championship

*21 to 28 March*

### Châtel X Trem Obstacle Race

*15 April*

### Châtel Water Slide

*22 April*

Photo - 13311 - Photo credit: J.-F. Vuarand (Châtel Tourisme) - JM. Couvêlard - J. Kneislik - S. Cochard - V. Thiebaut - Studio Yvon  
Document not legally binding - please dispose of responsibly. The information and prices in this document are given as a guide only, and may be subject to change. The prices shown are in euros and include all taxes at the VAT rate in force on the date of purchase. Châtel Tourisme cannot be held responsible for any changes.

