

CHÂTEL

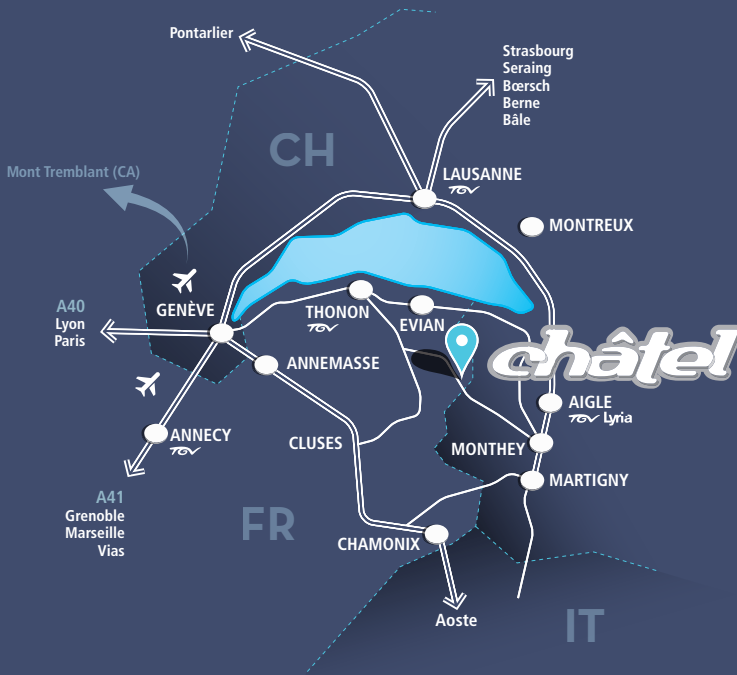
NATURAL SOURCE OF OPTIMISM



châtel
Portes du Soleil

GETTING TO CHÂTEL

Located in the heart of the Portes du Soleil between Lake Geneva and Mont-Blanc, Châtel is just 20 minutes from the Swiss motorways, 30 minutes from Aigle railway station, 1.40 hours from Geneva Cointrin international airport and 45 minutes from Thonon-les-Bains railway station.



GPS COORDINATES

- > Latitude: 46.269966
- > Longitude: 06.840753

BY ROAD

From France: follow signs for Geneva, exit the A40 motorway at Annemasse, continue to Thonon then follow signs for Vallée d'Abondance/Châtel.

From Switzerland: follow signs for Monthey - Grand Saint Bernard, exit the motorway at Monthey (Portes du Soleil exit) then follow signs for Morgins.

BY RAIL

From France: Thonon railway station is the closest to the resort, with connecting taxi and bus services.

From Switzerland: there is a daily rail service between Geneva airport and Aigle. Transfers between the station and resort are by taxi.

During school holidays, the Buski service operates transfers between the Valley resorts and the TGV Lyria rail service at Aigle station.

- > www.voyages-scnf.com
- > www.tgv-lyria.com

BY AIR

Geneva Cointrin international airport is only 1.40 hours from Châtel. Travel to Châtel is by train to Aigle or Thonon then by bus or taxi.



MOBILE

Find us on the web by downloading the flashcode application.

> www.chatel.com

> 03
ONE HUGE **SKI AREA**

> 05
A WIDE **CHOICE OF ACTIVITIES**

> 07
TWO LABELS

> 10
PRESERVATION OF THE ENVIRONMENT

> 12
SPECIAL OFFERS

> 14
RESORT STATISTICS

> 15
WINTER DATES

ONE HUGE SKI AREA

PISTES OF EVERY COLOUR

Since 30th January 2015 when the inter-resort connection between Super Châtel and Linga was opened, you can ski the entire Châtel ski area without taking off your skis.

Located at Vonnes (in the Morgins direction) the 6-man detachable 'Portes du Soleil' chair-lift and the 4-man detachable 'Gabelou' chair-lift have changed the way skiers ski the Portes du Soleil.



New horizons have been opened and now skiers can enjoy the **breath-taking views, easily accessible pistes of all levels, specialist activity zones (Smoothpark, Fun zone, Mauve Milka piste, DVA Park, Winter Fantasticable)**, and satisfy any sized appetite in one of the many **mountain restaurants** offering a delicious combination of their **own specialities and traditional local cuisine**, without removing their skis!

That's what skiing's about in Châtel. A place where visitors can revel in vast ski areas, either in the resort or elsewhere in the Portes du Soleil.

New

SEE CHÂTEL, SHARE CHÂTEL!

Try skiing 'Selfie' mode on the Selfie Tour: visit 10 photo spots, 9 of which are indicated with easy to follow signs. Take a selfie and share it on Instagram. Choose your own favourite 10th selfie spot to share with your friends.

Get connected with Fun Plan:
Your virtual private ski guide will take you on an exciting day tour of the ski area.

Each stage reveals a different, new breath-taking vista of Châtel as incredible views of the Dents du Midi, Dents Blanches in Switzerland and Mont Blanc reveal themselves - and that's in addition to the views of Lac Léman and local summits surrounding the Abondance valley!

Don't forget your camera or mobile to immortalise these magic moments and share them on social networks.

And now, visitors to Châtel can **extend their skiing day and ski under the stars to music on Thursday evenings from 7.30pm to 9.30pm on the floodlit Linga piste.** It's fun and it's free!





The Châtel ski pass is valid on 54 ski lifts and 64 ski runs, in the Swiss resort of Torgon, the Corbeau section of the Swiss resort of Morgins and the Braitaz area of La Chapelle d'Abondance (including the Panthiaz bubble).

Should you wish to go further and ski the Portes du Soleil, the 'Portes du Soleil' ski pass is valid in 12 resorts in France and Switzerland, 197 ski lifts and 300 ski runs!

There are direct links from Châtel to: Avoriaz, Morzine, Les Gets, Saint Jean d'Aulps, Montriond, Abondance, La Chapelle d'Abondance in France and Morgins, Torgon, Champoussin-Les-Crosets and Champéry in Switzerland.

PRICES

CHÂTEL SKI PASS

Adult (20-64 yrs)	
> 1 day	€41.00
> 6 days	€195.00

Young person/senior (16-19 yrs/65 yrs +)

> 1 day	€36.90
> 6 days	€176.00

Child (5-15 yrs)

> 1 day	€30.80
> 6 days	€146.00

PORTES DU SOLEIL SKI PASS

Adult (20-64 yrs)	
> 1 day	€51.00
> 6 days	€255.00

Young person/senior (16-19 yrs/65 yrs +)

> 1 day	€46.00
> 6 days	€230.00

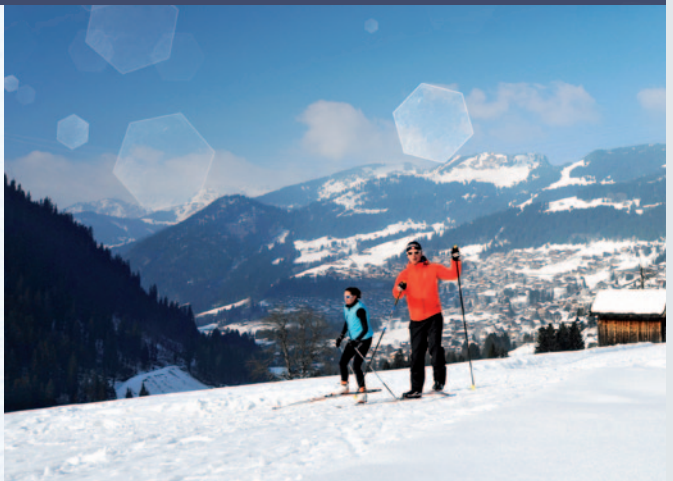
Child (5-15 yrs)

> 1 day	€38.00
> 6 days	€191.00

Other durations and special offers are also available:

- > Family tariff (Châtel or Portes du Soleil),
- > Group tariff (Châtel or Portes du Soleil),
- > 5 hours (Châtel or Portes du Soleil),
- > 6x5 hours (Châtel),
- > 5 non-consecutive days (Châtel),
- > Early Booking (Châtel or Portes du Soleil),
- > Flash sales (Châtel or Portes du Soleil),
- > Christmas (Châtel or Portes du Soleil),
- > Rock The Pistes (Portes du Soleil),
- > Duo/Trio (Portes du Soleil),
- > Special offer from 1st April 2017 (Châtel or Portes du Soleil),
- > Top-up your ski pass on line...

A WIDE CHOICE OF ACTIVITIES



OTHER SNOW ACTIVITIES

SNOW ISN'T JUST ABOUT SKIING!

With numerous other snow activities like **Snake gliss**, **airboard**, **yooner** and **snowracer** on offer, the thrills don't have to stop after a day on skis! Meet at Pré-la-Joux at the end of the day, pick up the essentials, including safety information, from an instructor then take the last Pierre Longue chair lift up to begin your exciting descent.



There's easily accessible off-piste skiing too in Châtel on La Leiche run, located near the top of the ski lifts. Try out this easy introductory run with a local instructor.

Adult beginners are well catered for too in the Portes du Soleil with the innovative "**Youcanski**" offer. This all-inclusive offer comprises a ski pass, ski lessons and equipment hire for each person for either 3 or 6 consecutive days. Dedicated instructors and a ski area with ski runs of all levels guarantees fast-track improvement!

And now, **altitude access is no longer reserved for skiers**, with the introduction of the following **pedestrian-friendly ski lifts**; Petit-Châtel and Pierre Longue chair lifts and Super-Châtel and Linga bubble lifts.

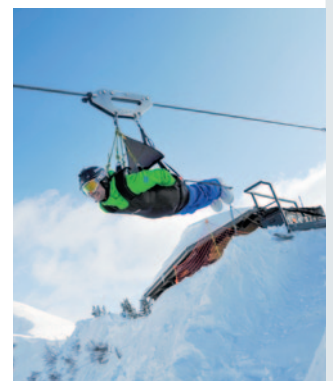
Nor are **Nordic Skiers** forgotten; Abondance, La Chapelle d'Abondance and Châtel have collaborated to create a **40km Nordic skiing circuit along the Dranse river** which flows through the Abondance valley to Lac Léman.

The 4 ski lifts with pedestrian access take visitors quickly and easily to the Petit Châtel and Super Châtel and Col de Bassachaux **Nordic ski circuits. The circuits are well signed, maintained and secure.**

For seniors and visitors with reduced mobility, specially adapted material and specifically trained instructors are on hand to ensure everyone is able to enjoy the snow. Using **Dualski, Uniski, Kartski and Tandemski** (patents pending) qualified instructors will ensure visitors (re)discover the joy of skiing. And with **Taxiski**, holidaymakers can also delight in stunning mountain-top views of Lac Léman or Mont Blanc.

For skiers (without specific equipment like snowscoots or ski bikes...) **the winter version of the Fantasticable offers unforgettable thrills.** Take off your skis, leave your poles and **fly down the cable no. 1 at 140m** over Plaine-Dranse village. **The cable is 1,200m long and speeds get close to 100km/hour.**

Your ski equipment will follow you down to be collected at the bottom. Price €25 per flight.





OUTDOOR ACTIVITIES

NATURE LOVERS

Numerous activities, to suit everyone:

- > the ice rink, curling rink and ice fishing are all located close together near Vonnes Lake,
- > paragliding from 1,970m is possible at the top of Morclan,
- > the Eterlou nature-trail walk explaining local mountain flora and fauna at Pré-la-Joux by the sledging runs,
- > a new heritage map has been drawn up detailing 4 short walking circuits in and around the village (the walks are easy and interesting and possible in both winter and summer),
- > over 80km of snow-shoe walking trails.

Last winter, a new snow-shoe track in Super Châtel with departure points at both Châtel and Morgins (in neighbouring Switzerland) was opened (further details in the New this year paragraph, p11). Accompanied snow-shoe walks with qualified guides are also possible. Full weekly programme available from the Tourist Office.



RELAXATION AND WELL-BEING

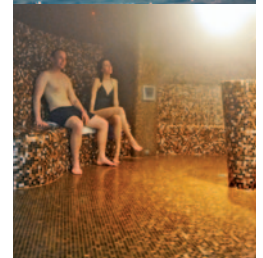
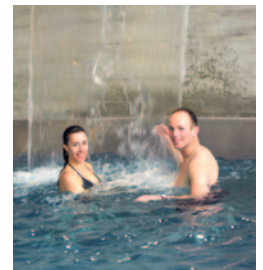


HOLIDAYS ARE THE TIME FOR WELL-BEING AND RELAXATION, EVEN IN THE MOUNTAINS IN WINTER

The choice is vast! There is something to please everyone. The **Forme d'O Aquatic centre** with its interior and exterior swimming pools and **Océane Spa** is open all year round for families, children and groups to relax, take a dip or join one of the wide variety of supervised activities.

There are many well-being options to choose from – all with the same aim - ensuring everyone can enjoy the calming, restorative benefits of relaxation and well-being activities during their holiday:

- > the **Fée du Bien-être** balneotherapy centre offers, among other things, their speciality Medyjet treatment,
- > the **Thoule-Hubschwerlin** massage cabinet providing Californian massages and baby massage workshops,
- > the **Authentic Voyage spa** at the Macchi hotel enveloping clients in its Indian inspired ambiance,
- > the **Ô des Cimes spa** specialising in Décléor aromatherapy offering an extensive massage and treatment menu,
- > the **Océane spa** at the aquatic centre specialising Algotherrm products.



TWO LABELS



A QUALITY WELCOME



LOCATED IN THE ABONDANCE VALLEY WHICH HAS A 'PAYS D'ART ET D'HISTOIRE' CLASSIFICATION, CHÂTEL VILLAGE HAS ITS OWN 'FAMILLE PLUS' CLASSIFICATION IN RECOGNITION OF THE PRIORITY IT GIVES TO WELCOMING FAMILIES AND CHILDREN.

The combination of these two labels provides visitors with a quality holiday guarantee.

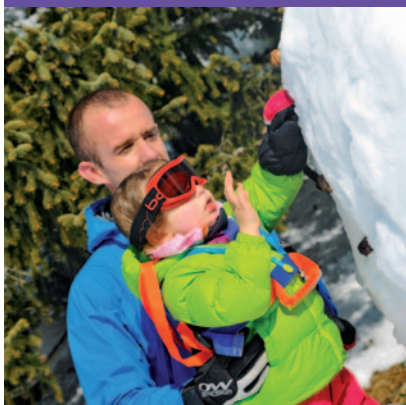


The "Pays d'Art et d'Histoire" label is designed to promote local countryside, habitat, traditions, knowledge, skills and gastronomy and confirms the priority given to familiarising the public with this rich rural heritage - the heart of which is the 'Abondance' valley; birthplace of a breed of cattle, a village and an AOP cheese. A rare combination.



The "Famille Plus" label reflects the extensive range of activities and services for families and children available in the resort including: equipment, welcome, activities, sports and exciting innovations for children of all ages.

ACTIVITIES FOR EVERYONE - EVERY DAY



For children from 4 months to 4 years old, the Mouflets crèche is open 7 days-a-week and offers either full or half-day care, with or without meals with an afternoon snack provided.

The age-specific activities are all run by qualified carers.



From 4 years to 14 years the "Club des Petits Montagnards" is open during the school holidays. This kids club offers activities (without accommodation). It is run by qualified professionals offering a fun and varied activity programme.



During the school holidays, enjoy time with family and friends around one of the giant wooden games, in the -6yrs play area (with bubble bath, Lego...), or discover the secrets of Châtel village on a treasure hunt for adults and children from 6/12 years old.



The full range of activities for children and parents is detailed in the "Familie" booklet and the activity programme available from the Châtel tourist office. There are, for example, 3 secure sledging areas, the Eterlou nature trail with an environmental theme, wood decorating workshops (board drawing for 3/6 year olds, decorating objects for 4/8 year olds, key-ring making for 7/13 year olds and creative construction with clothes pegs for 8/12 years).



Festive periods are celebrated in themed weeks based on Christmas, Carnival and the annual Agricultural fair...



Very young children can have a ride or two on the merry-go-round located in the village centre.



Children with their parents can try a spot of ice fishing at Vonnes lake, helped by a trained instructor.



The Old Custom House and mountain smuggling and contraband information centre is an interesting attraction for visitors of any age. It takes a look at Châtel, the Abondance valley and Portes du Soleil from a different perspective with explications, illustrations, games, temporary exhibitions (currently "Custom officers in the Snow") all illustrating a fascinating period of local history.



Once a week, during school holidays, the day closes with a special kids spectacular including a magic, singing and clown show...



Afternoon tea at a farm is very popular for all ages and provides an opportunity to discover farm life, visit the farm, see Abondance cattle and sample a selection of delicious local home-produced delicacies.

New

Free transport is provided for children travelling from Les Moufflets Crèche in the village centre to the children's ski lessons in the ski school garden during school holidays. Places are limited.



During the day you might catch a glimpse of a well-known characters like the Purple Milka cow either on the Mauve ski run in Super Châtel or handing out snacks at the foot of the pistes!

Children and adults can relax and take a back seat as they tour the village on the little train!

PRESERVATION OF THE ENVIRONMENT

OVER THE LAST FEW YEARS, CHÂTEL RESORT HAS INTENSIFIED ITS ENVIRONMENTAL PROTECTION PROGRAMME

A few years ago Châtel signed a sustainable development charter committing to introducing concrete actions in both the village and ski area (waste recycling, burying of service cables and power lines, low-energy public lighting (LED), free minibuses...).

More recently they have been awarded the Flocon Vert label by the Mountain Riders Association confirming the village as a mountain resort with a strong ecological agenda. A clean mountain environment is everyone's responsibility!



LOW IMPACT TRANSPORT

In addition to the existing minibus network (complying to European environmental guidelines), which became free of charge in winter 1983-1984, the new inter-resort link opened on 30th January 2015, has made liaisons even easier by linking the entire ski area.

Skiers can now link Super Châtel and Linga without removing their skis.

The use of private cars and shuttle busses has been significantly reduced together with the resulting greenhouse gas emissions in the village and surrounding areas.

SPECIFIC ACTIONS

The annual Ecolovie day at the end of the winter season brings together locals of all ages to collect and recycle rubbish gathered from the ski area and Dranse river banks.

This enjoyable day also provides a valuable opportunity to raise awareness of the importance of responsible environmental behaviour.

All major events organised in the village or ski and Nordic ski areas now take into account the environmental impact of the specific event. Park and ride facilities reducing car use in the resort have been introduced to optimise events.

children

ENVIRONMENTAL AWARENESS AT SCHOOL

The younger generation are being taught how to look after their environment through a school programme including field trips and a visit to the Châtel rubbish dump - to learn how to effectively sort rubbish for recycling.

The students have subsequently installed a compost bin for school canteen leftovers and collected a variety of insects from the local woods to aid the process!

SKI AREA MANAGEMENT

An important element of environmental protection encompassing; efficient energy use, cleaner piste groomers, water resource management, recycling, rubbish and cigarette stub collection (the latter requiring specific recycling). This has proved a successful environmental protection strategy resulting in ISO 9001, 14001 and OHSAS 18001 environmental certifications.

These awards are given in acknowledgement of a sound environmental management strategy including consideration of health and safety in the workplace. Additional work such as verge clearance, natural soil improvement, replanting of areas in symbiosis with local farmers has resulted in top quality mountain pastures in summer and ski pistes in winter.

Communication: An awareness campaign to explain local council commitment to a cleaner, greener environment is currently being drawn up and will include appropriate slogans featured at the foot of the slopes and on council vehicles.

The town hall has created a "Clean Resort" internet page on its website where individuals can post details of fly – tipping, pollution or the presence of invasive plants – so problems can be dealt with quickly and efficiently.

Local mountain lakes and reservoirs are also included in this environmental initiative and undergo regular tests and water controls carried out by the "Easylacs" organisation to ensure their continued health and cleanliness.



CHÂTEL, IN THE CHABLAIS GÉOPARK

The Col de Bassachaux, part of the Châtel municipality is part of the Chablais Géopark. This recognition further acknowledges the priority given to preserving the local landscape and environment whilst encouraging tourism and increasing awareness of the local environment. It is a plus for local tourism as visitors can join various organised activities within the Géopark such as guided walks to local historical and geological points of interest.

Close-by another important site of natural interest is the Mont de Grange nature reserve which, culminating in a height of 2,432m, is home to a diverse range of flora and fauna.

It has been classed Natura 2000 since 2008 and can be considered as environmentally important as the Col de Bassachaux, despite not being part of the Géopark.



AGRICULTURE AND PASTORALISM

A certified 'Pays d'Art et d'Histoire', the Abondance valley of which Châtel is part has a strong territorial identity.

The village is proud to promote a culture in which traditional values thrive in harmony with tourism and tourism development. Holidaymakers have numerous opportunities to learn about the history and heritage of Châtel and the Abondance valley throughout the year. They can try afternoon tea at a farm or Abondance cheese-making with milk from the local Abondance cattle (and from which the delicious local dish Berthoud is made).

Of the thirty farms in and around the village, 15 of them make Abondance cheese.

To preserve and promote this local skill, farmers have formed a group to ensure this tradition continues to thrive in the future. In Châtel, farms generally pass from one generation to another. The average age of farmers is between 35/40 years old. Agriculture is very much alive and kicking!

new this year

LA BOUCLE DU RENARD

Châtel has been working in close partnership with neighbouring Morgins in Switzerland for over 50 years.

They are both Portes du Soleil resorts and are linked in winter by ski runs, lifts and beautiful marked snow shoe trails.

Now a new snow shoe circuit "La boucle de Renard," created in January 2016, criss-crosses the frontier with 6.5km of track through forests and countryside offering exceptional panoramic views of the Dents du Midi, the Valaisannes and Vaudoises Alps and Mont Blanc.

The circuit can be started in either Châtel or Morgins.

SPECIAL OFFERS



SKIING AND WELL-BEING

Two exciting new offers combining the Ski area and Forme d'O aquatic centre were introduced last year:

“SENSATIONS” COCKTAIL

UNIQUE: COMBINE SKIING, ADRENALINE, HEALTH AND BEAUTY FOR AN UNFORGETTABLE HOLIDAY IN CHÂTEL!

- > 1 day Châtel ski pass – enjoy pistes and views!
- > 1 Fantasticable flight – for thrills!
- > 1 entry to the Océane spa in the Forme d'O aquatic centre (well-being area, swimming pool, 2 hammams, 3 saunas...) - relaxation and well-being!

All-inclusive price **€75**

SKIÉO

FOR THOSE WHO LIKE SKIING – AND A BIT MORE...

Combine the joys of skiing and water with the new SKIÉO offer:

WEEK PASS

- > 6 x 5hrs Châtel ski pass
- > 6 entries to the Océane Spa at the Forme d'O aquatic centre (well-being area, swimming pool, 2 hammams, 3 saunas...)

Adult (20/64 yrs)

€239

Child (5/15 yrs)

€154

Young person (16/19 yrs)
or Senior (65 yrs +)

€219

DAY PASS

- > 1 x 5hrs Châtel ski pass
- > 1 entry to the Océane Spa at the Forme d'O aquatic centre

Price **€48***

*From 16 yrs.

FURTHER INFORMATION:

> www.chatel.com



ACCOMMODATION

WELL-BEING AND ACTIVITY BREAK

7-NIGHTS' ACCOMMODATION
IN AN APARTMENT
+ "WELL-BEING AND ACTIVITY COCKTAIL"
(3 days skiing, entry to the aquatic centre, massage, snow shoe walk...).

From **€283***

*Per person, based on 4 people sharing a studio. Price valid from 7th January 2017 to 14th January 2017 and from 25th March 2017.

FURTHER INFORMATION:

> www.chatelreservation.com

SPRING SKIING...

"SKIING, YES, BUT SOMETHING ELSE TOO...!"

For the third consecutive year Châtel, in partnership with France Montagnes, is collaborating in this Spring ski initiative.

From 19th March 2017 there will be a wide range of activities and special offers linked to this magical time of year when the days get longer and sunnier, snow conditions provide quality skiing and local festivities heat up for the spring...

FURTHER INFORMATION:

> www.leprintempsduski.com

> www.chatelreservation.com



CENTRAL HOSTEL CHÂTEL

NEW ACCOMMODATION

A youth hostel located in the village centre on the route du Linga with accommodation for individuals, families or groups in rooms with breakfast.

FURTHER INFORMATION:

> www.centralhostelchatel.com

RESORT STATISTICS



CHÂTEL VILLAGE

- > 1,282 full time residents
- > 22,622 tourist beds
- > 24 hotels (1 hotel 4*NN, 9 hotels 3*NN, 11 hotels 2*NN, 3 hotels).
- > 2x4*NN holiday apartment complexes
- > 1 holiday apartment complex (future 1x4*NN)
- > 2x3*NN holiday apartment complexes
- > 1 holiday apartment complex with hotel facilities
- > 11 hotels for groups, holiday centres
- > 2 youth hostels
- > Other accommodation: 1 offering long or short stays, 2 other accommodation in which 1 chalet club 3*NN, 5 bed and breakfasts
- > 1 winter camping/caravanning site****
- > 60 restaurants (including hotel restaurants)

CHÂTEL SKI AREA

- > 54 ski lifts and 64 ski runs (with the Châtel ski pass)
- > In which the resort of Châtel has 43 ski lifts (2 bubbles, 12 chairlifts, 25 drag lifts, 4 tow ropes), 45 ski runs (6 black runs, 15 red runs, 15 blue runs, 9 green runs)
- > Hourly capacity: 54,909 skiers/hour
- > Facilities: 1 snowpark, 1 boardercross run, 241 snow cannons, 16 piste bashers, 40 ski patrollers
- > Minimum altitude: 1,100m
- > Maximum altitude: 2,200m
- > Maximum vertical drop: 1,000m

PORTES DU SOLEIL SKI AREA

- > 600km of skiing
- > 197 ski lifts (4 cable cars, 9 gondolas, 78 chairlifts, 102 drag lifts, 4 tow ropes)
- > 300 ski runs (30 black runs, 110 red runs, 123 blue runs, 31 green runs)
- > Hourly capacity: 266,717 skiers/hour
- > Facilities: 10 snow parks, 2 half-pipes, 4 boardercross runs, 1,300 snow cannons, 100 piste bashers, 178 ski patrollers
- > Minimum altitude: 950m
- > Maximum altitude: 2,400m
- > Maximum vertical drop: 1,000 m



WINTER **DATES** 2016-2017

THE CHÂTEL EVENTS CALENDAR IS AS VARIED AND FULL AS EVER! SOME REGULAR EVENTS RETURN, THEIR DATES SET IN STONE.

FROM 19TH TO 25TH DECEMBER

> The season begins with end of year celebrations, with particular emphasis on family events: **Châtel Christmas**, celebrating the magic of Christmas and snow and numerous other festive events and activities. Father Christmas arrives on the 24th December to begin his present delivery, giving delicious little gifts to any lucky children he finds along his way!



FROM 25TH DECEMBER TO 1ST JANUARY

> The last week of the year is celebrated with joy, fun, friends, music and festivities! On 31st December the **Saint Sylvestre fireworks** will bring an explosive start to the New Year!

FROM 29TH JANUARY TO 3RD FEBRUARY

> Châtel hosts the **Women's European Alpine Skiing Cup** in the Linga sector. The February holidays are full of fun activities with ski school torch-lit descents, the ski club show...



4TH AND 5TH MARCH

> The **third Oxfam Wintertrail** organised by the Abondance valley. A 60km snow-shoe walk for teams of four people to be completed in under 30 hours. A fun, friendly and fit show of solidarity for his very worthy cause!



FROM 19TH TO 25TH MARCH

> It's time to put on your skis and criss-cross the Portes du Soleil listening to the 5 concerts performed on the slopes during the **7th edition of the Rock The Pistes Festival**. Top performers from the international pop-rock scene will be present. The concert in the Châtel ski area will take place on 20th March.

There are other events in the pipeline and the final full programme will be sure to include activities and events ensuring an unforgettable holiday for everyone!



COMMUNICATION SERVICE CHÂTEL TOURISME

14, route de Thonon - BP 40 - F - 74 390 Châtel - Haute-Savoie - France
Tel. 33 (0)4 50 73 22 44 - Fax. 33 (0)4 50 73 22 87 - touristoffice@chatel.com

CONTACT: PASCALE DUCROT

Tel. +33 (0)4 50 73 25 58 - Mobile +33 (0)6 86 93 56 54
Fax +33 (0)4 50 73 22 87 - E-mail: communication@chatel.com

> www.chatel.com

châtel
Portes du Soleil

